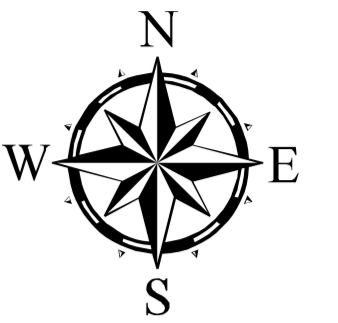
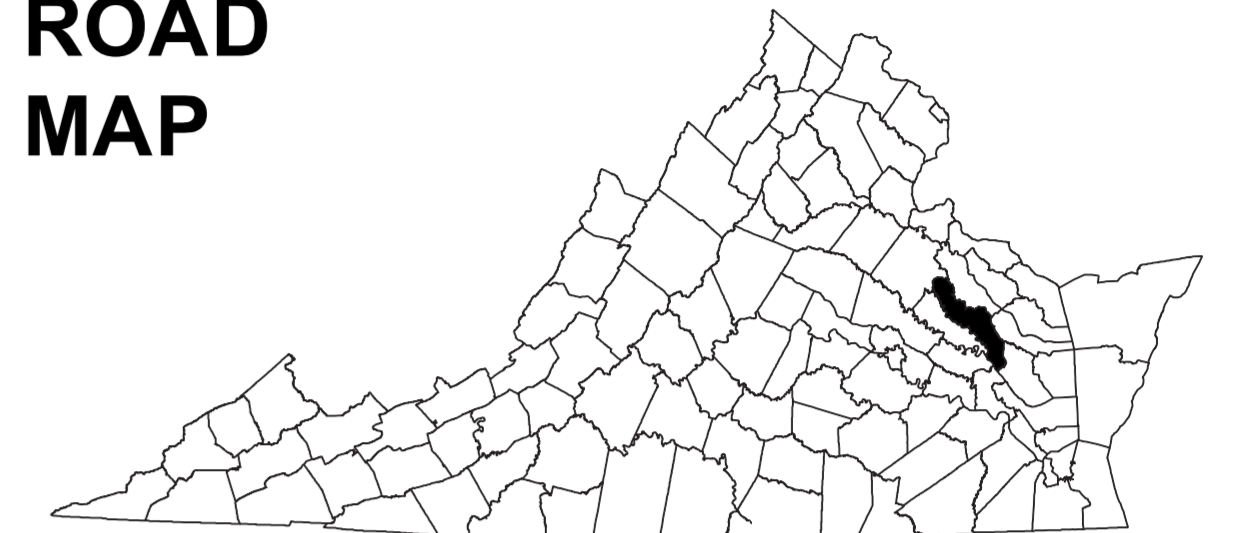


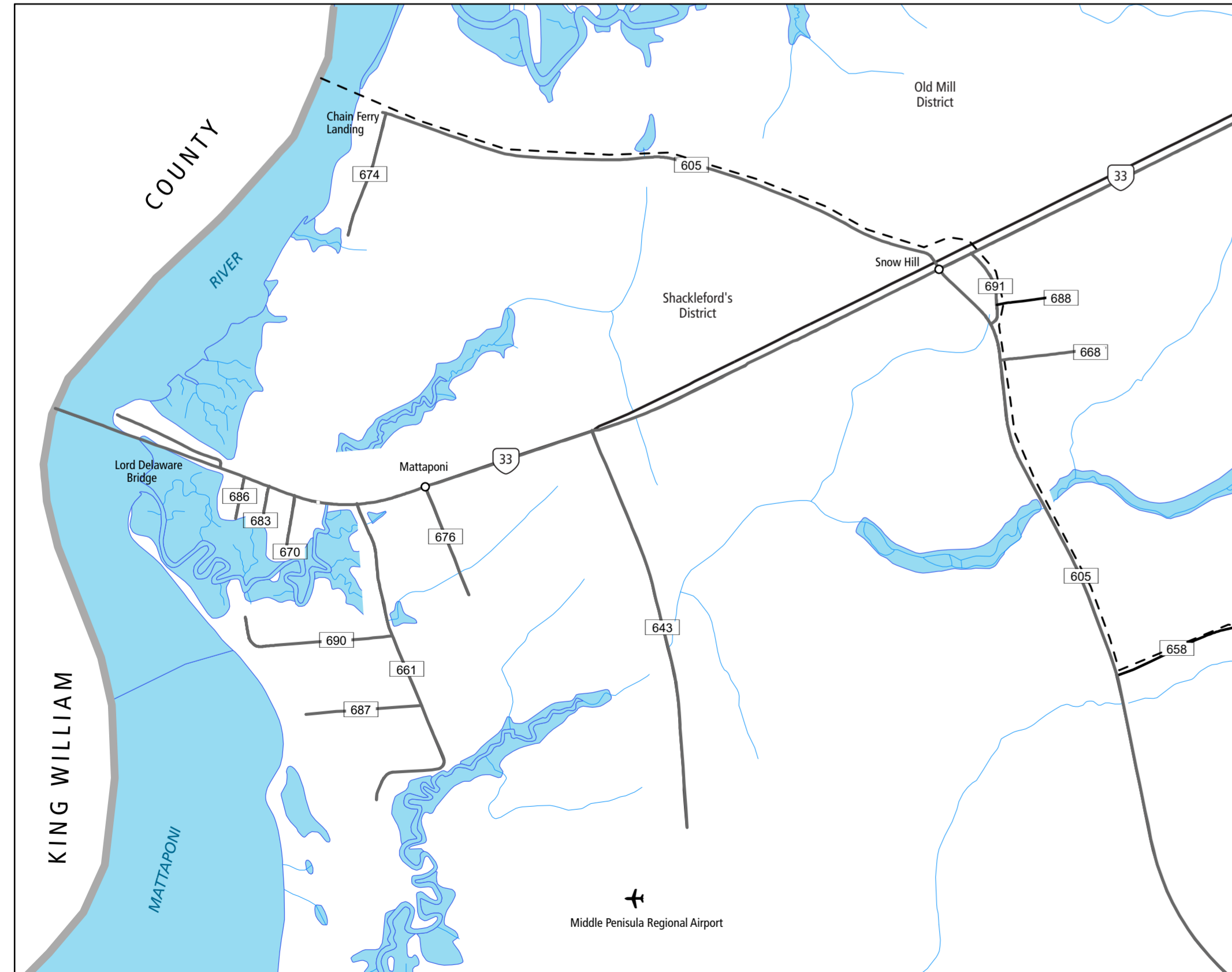
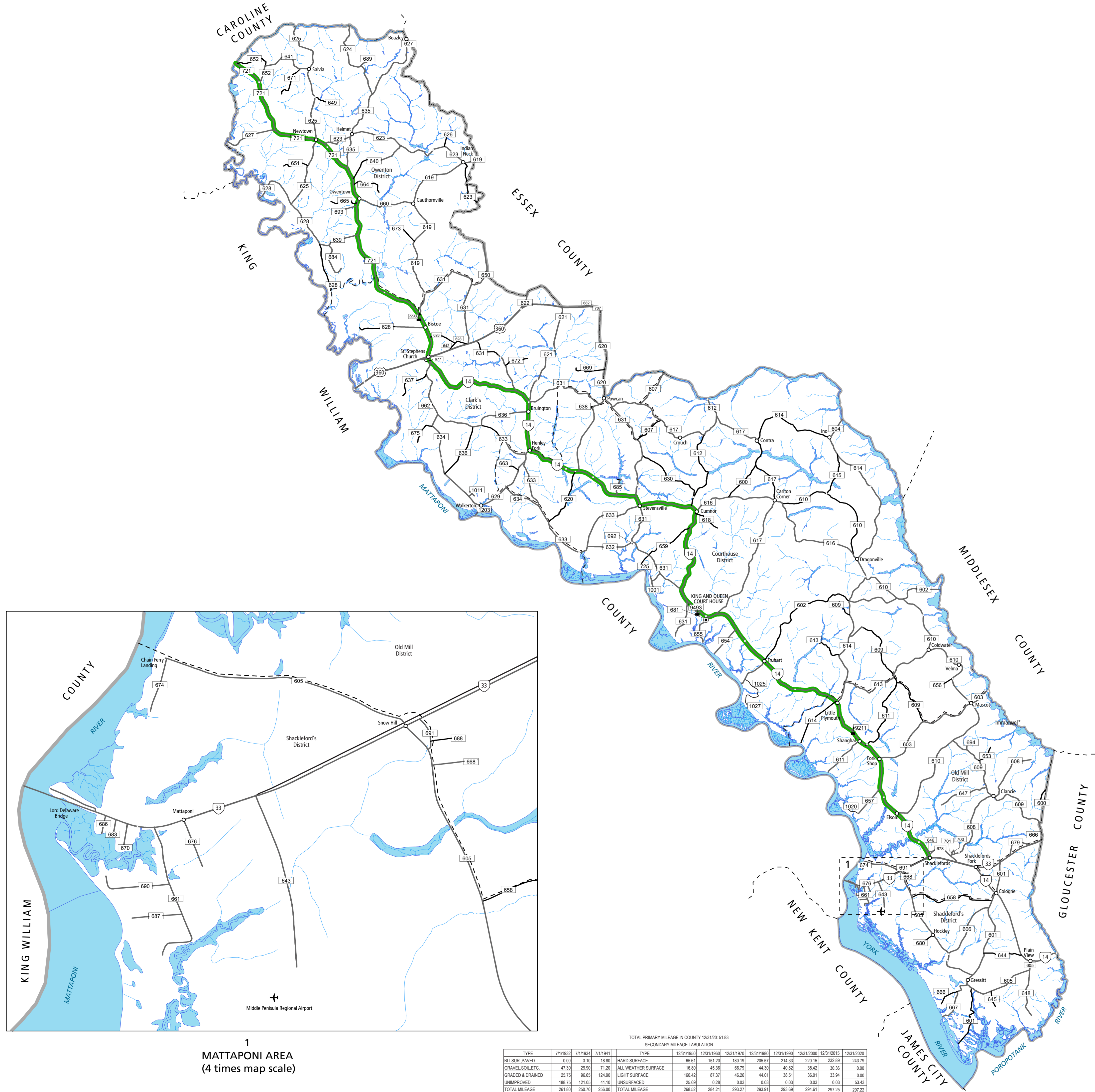
KING & QUEEN COUNTY, VA



COUNTY ROAD MAP



KING & QUEEN COUNTY



ROAD CLASSIFICATIONS

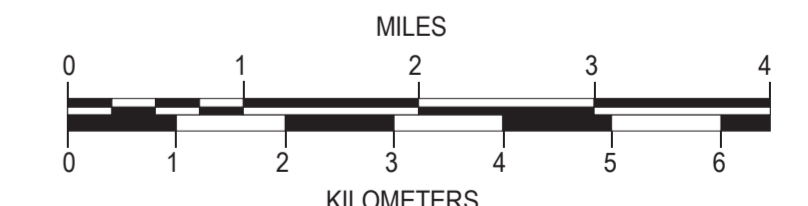
- Frontage Road
- Secondary Route
- State Route
- U.S. Route
- Urban Road
- LightSurface
- DividedHwy/Interstate
- ▬ AllWeatherSurface
- Unsourced
- otherSurface
- BikeRoutes
- AppalachianTrail
- Scenic Roads

MISCELLANEOUS

- Schools
- ⚓ Seaports
- ⊙ Park_Ride/Lots
- AIRPORTS**
- ✈ Commercial
- ✈ General
- ✈ Military
- RAILROADS**
- Ⓜ Metro
- VARailroads
- Ⓟ Park_N_Ride
- BOUNDARIES**
- ▨ MilitaryAreas
- ▭ MagisterialDistricts
- ▭ Incorp_Areas
- ▭ Natural_LandCover

Additional ROAD CLASSIFICATION (Post 2019)

Hard-surface



The accuracy or completeness of this map is not guaranteed or warranted. Map depicts state-maintained highway network as of May 1, 2021. Copyright © 2021 by Commonwealth of Virginia Department of Transportation, All Rights Reserved

AN INVENTORY OF STATE MAINTAINED ROADS

TOTAL PRIMARY MILEAGE IN COUNTY 12/31/20: 51.83

TYPE	SECONDARY MILEAGE TABULATION											
	7/1/1932	7/1/1934	7/1/1941	TYPE	12/31/1950	12/31/1960	12/31/1970	12/31/1980	12/31/1990	12/31/2000	12/31/2015	12/31/2020
BIT SURF. PAVED	0.00	3.10	18.80	HARD SURFACE	45.61	151.20	180.19	205.57	214.33	220.15	232.89	243.79
GRAVEL/SOIL, ETC.	47.30	29.90	71.20	ALL WEATHER SURFACE	16.80	45.36	66.79	44.30	40.82	38.42	30.36	0.00
GRADED & DRAINED	25.75	96.65	124.90	LIGHT SURFACE	160.42	87.37	46.26	44.01	38.51	36.01	33.94	0.00
UNIMPROVED	188.75	121.05	41.10	UNSURFACED	25.69	0.28	0.03	0.03	0.03	0.03	0.03	53.43
TOTAL MILEAGE	261.80	290.70	256.00	TOTAL MILEAGE	268.52	284.21	293.27	293.91	293.69	294.61	297.25	297.22