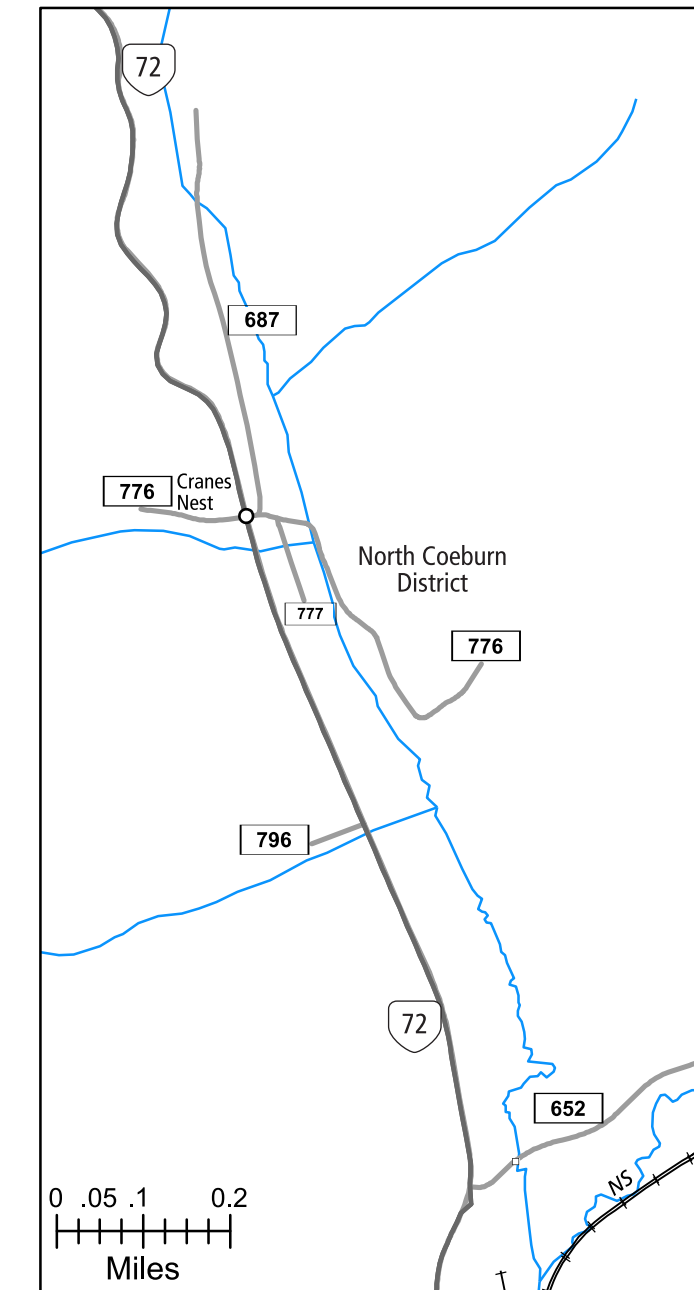
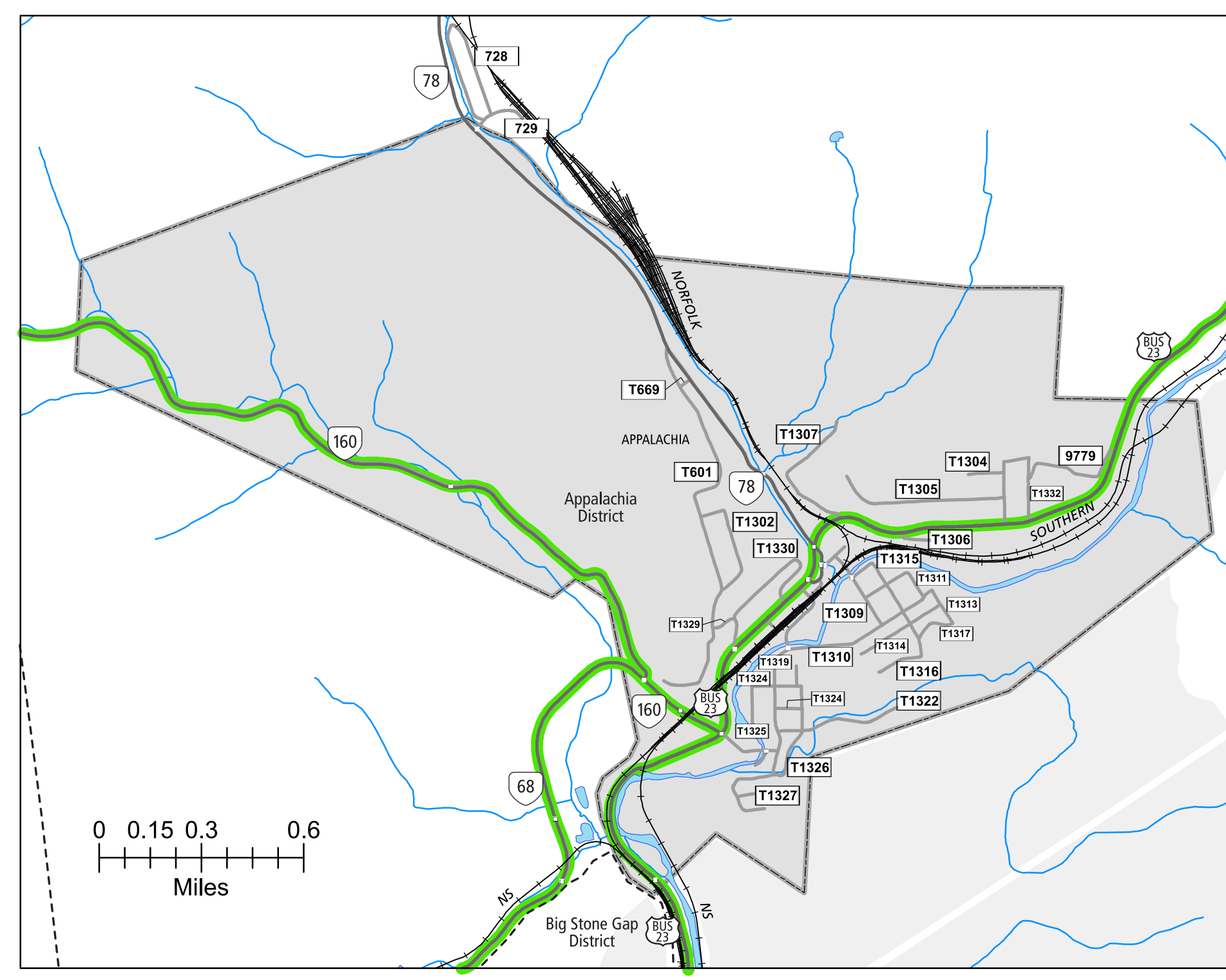


12 AREA SOUTH OF COEBURN



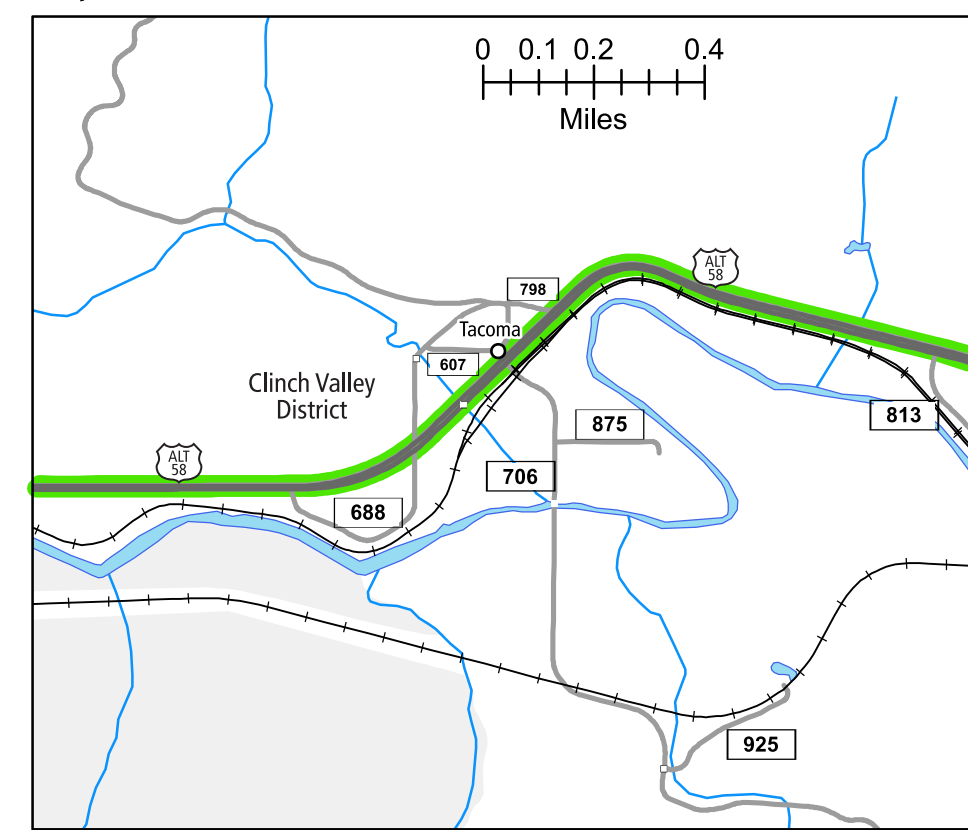
8 CRANES NEST AREA



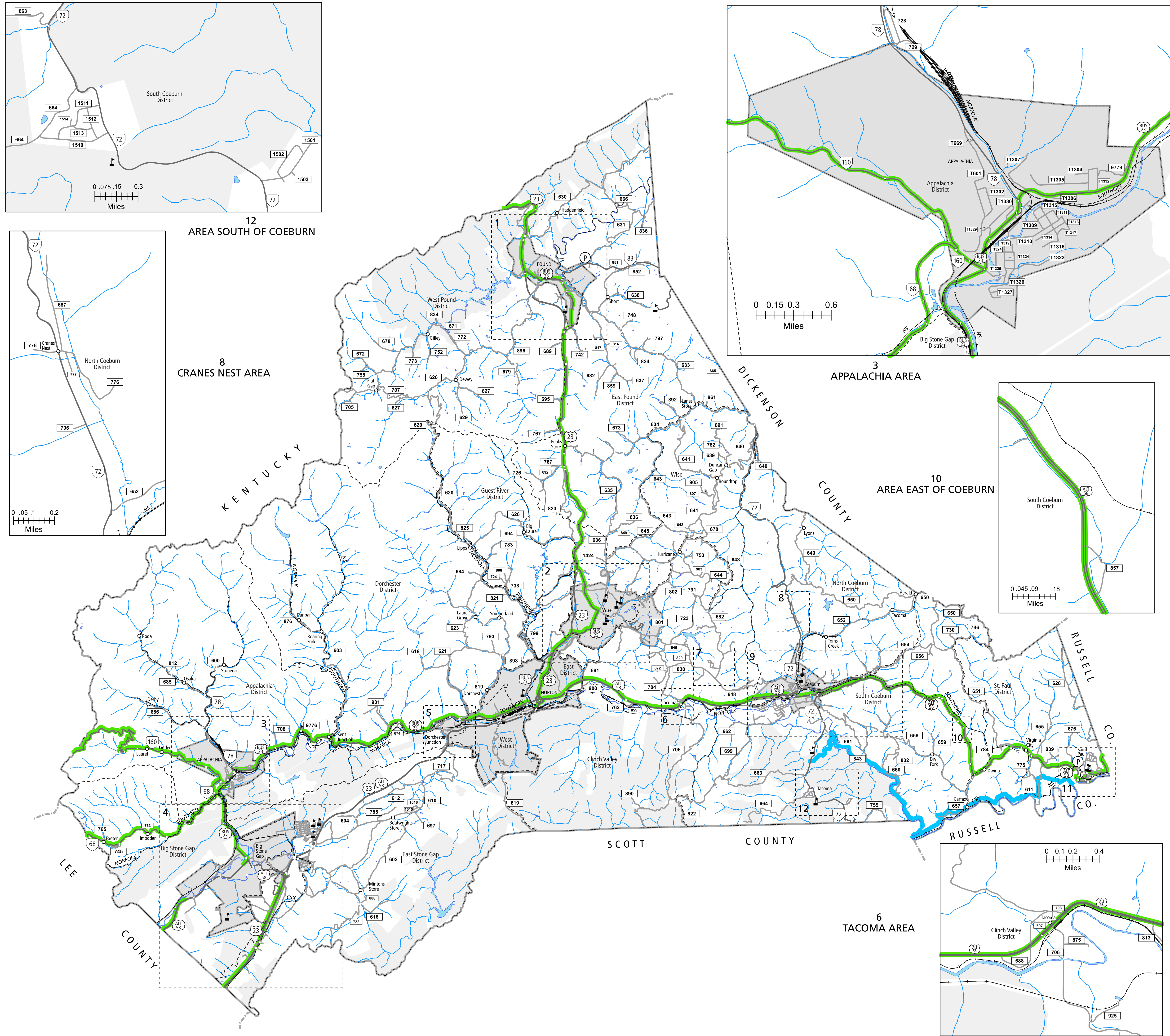
3 APPALACHIA AREA



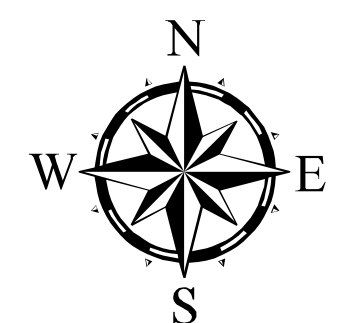
10 AREA EAST OF COEBURN



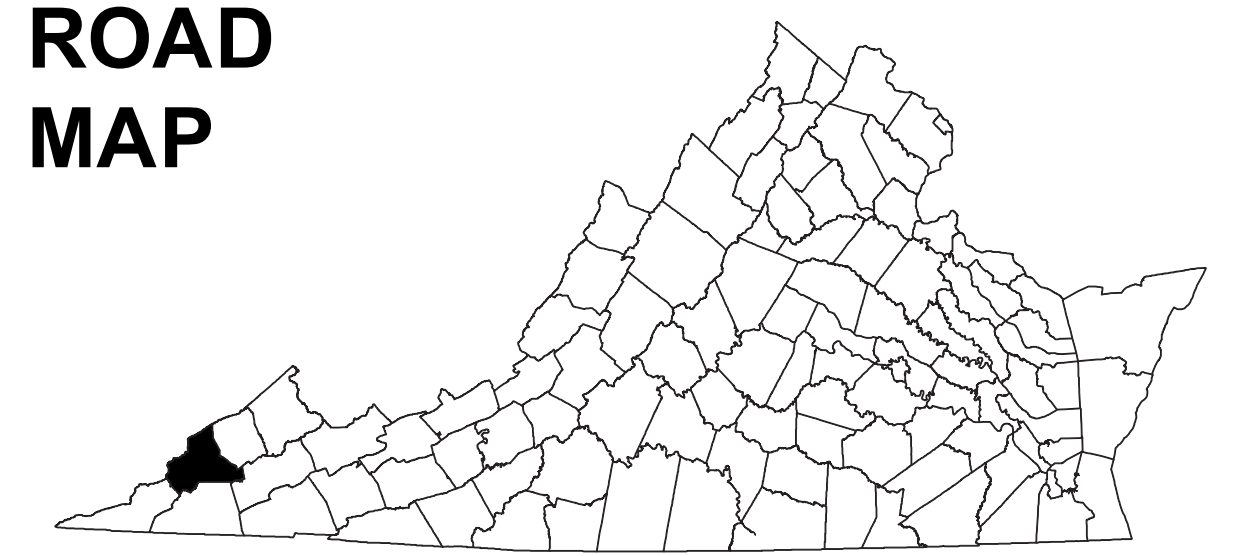
6 TACOMA AREA



WISE COUNTY, VA

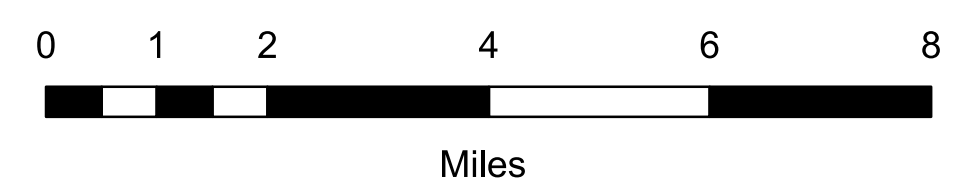


COUNTY ROAD MAP



WISE COUNTY

ROAD CLASSIFICATIONS	MISCELLANEOUS
Frontage Road	Schools
Secondary Route	Seaports
State Route	Park_RideLots
U.S. Route	AIRPORTS
Urban Road	Commercial
LightSurface	General
DividedHwyInterstate	Military
AllWeatherSurface	RAILROADS
Unsurfaced	Metro
otherSurface	VARailroads
BikeRoutes	Park_N_Ride
AppalachianTrail	BOUNDARIES
Scenic Roads	MilitaryAreas
Additional ROAD CLASSIFICATION (Post 2019)	MagisterialDistricts
Hard-surface	Incorp_Areas
	Natural_LandCover



The accuracy or completeness of this map is not guaranteed or warranted. Map depicts state-maintained highway network as of May 1, 2021. Copyright © 2021 by Commonwealth of Virginia Department of Transportation. All Rights Reserved

AN INVENTORY OF STATE MAINTAINED ROADS