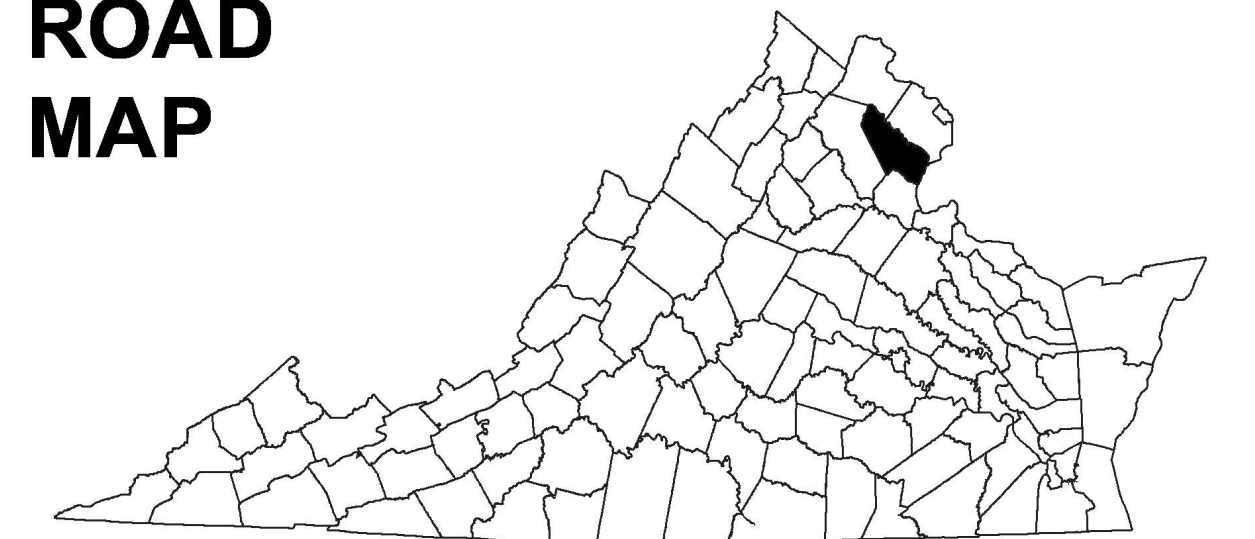


COUNTY ROAD MAP



PRINCE WILLIAM COUNTY

ROAD CLASSIFICATIONS

- Frontage Road
- Secondary Route
- State Route
- U.S. Route
- Urban Road
- LightSurface
- DividedHwyInterstate
- AllWeatherSurface
- Unsurfaced
- otherSurface
- BikeRoutes
- AppalachianTrail
- Scenic Roads

MISCELLANEOUS

- Schools
- Seaports
- Park_RideLots
- AIRPORTS**
- Commercial
- General
- Military

RAILROADS

- Metro
- VARailroads
- Park_N_Ride

BOUNDARIES

- MilitaryAreas
- MagisterialDistricts
- Incorp_Areas
- Natural_LandCover

Additional ROAD CLASSIFICATION (Post 2019)

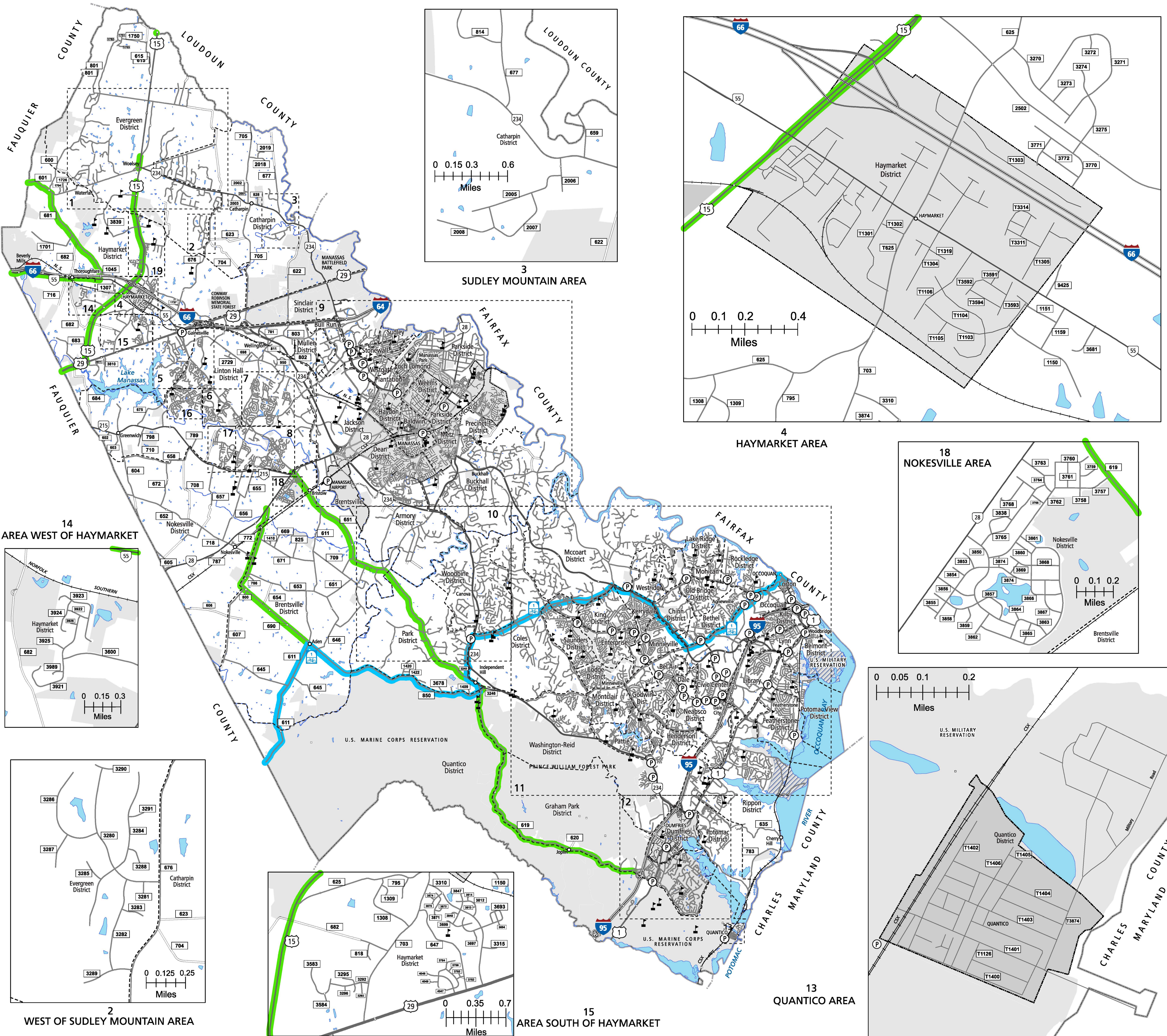
Hard-surface



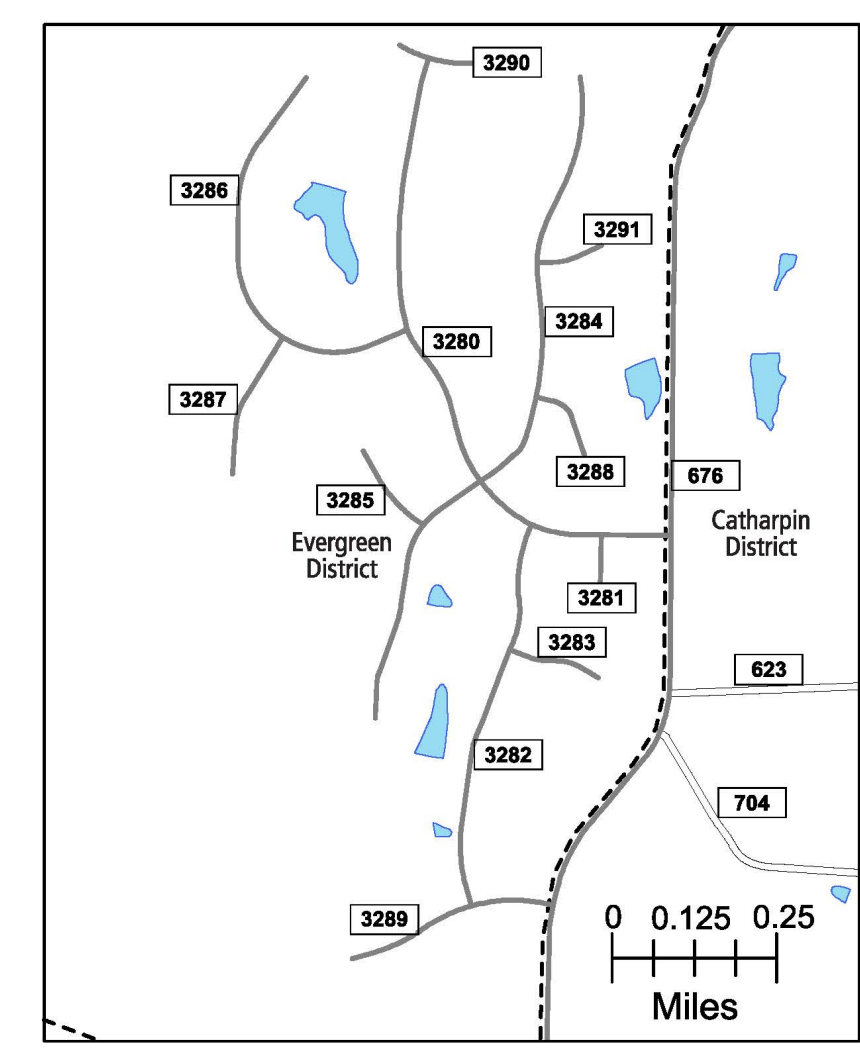
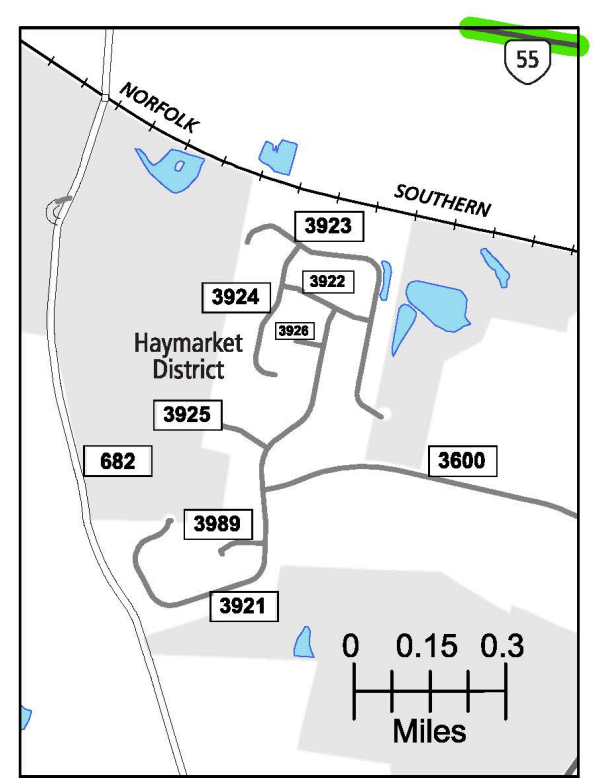
Miles

The accuracy or completeness of this map is not guaranteed or warranted. Map depicts state-maintained highway network as of May 1, 2021. Copyright © 2021 by Commonwealth of Virginia Department of Transportation, All Rights Reserved

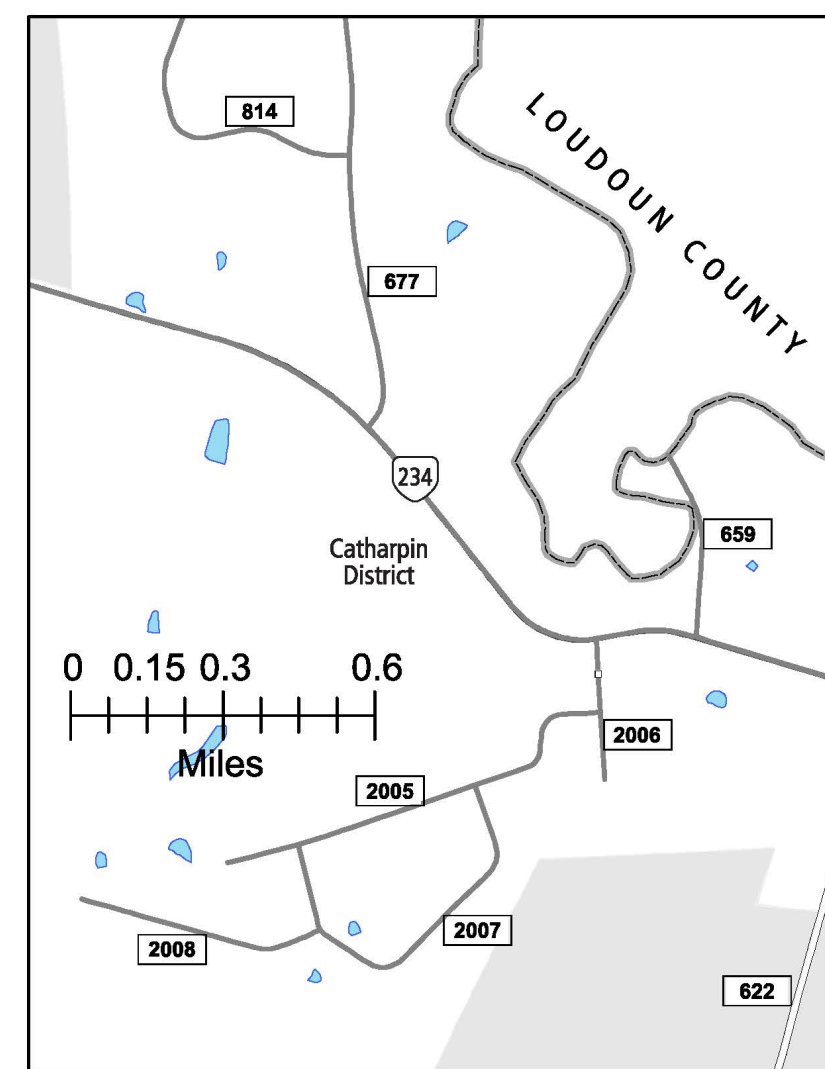
AN INVENTORY OF STATE MAINTAINED ROADS



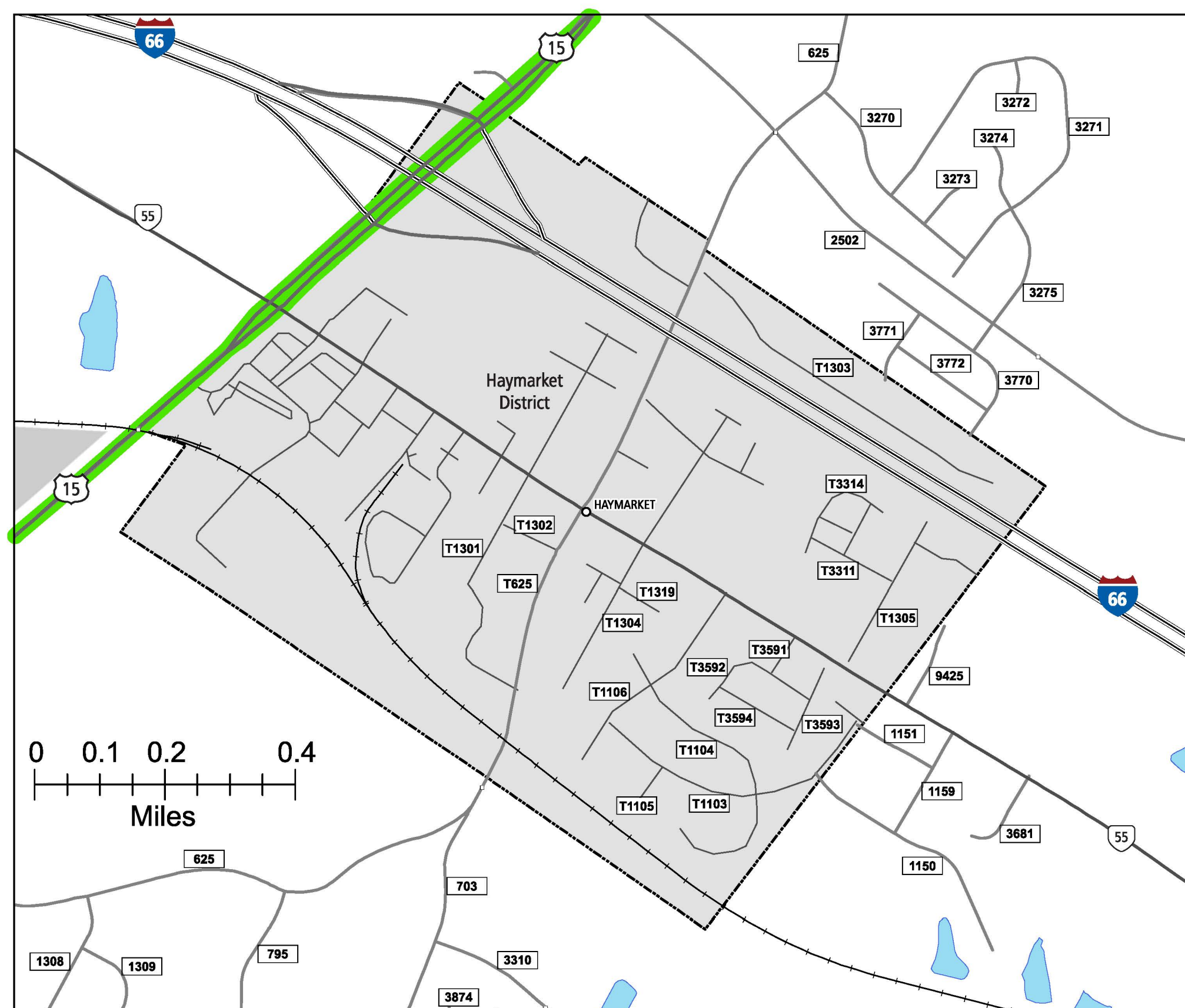
14 AREA WEST OF HAYMARKET



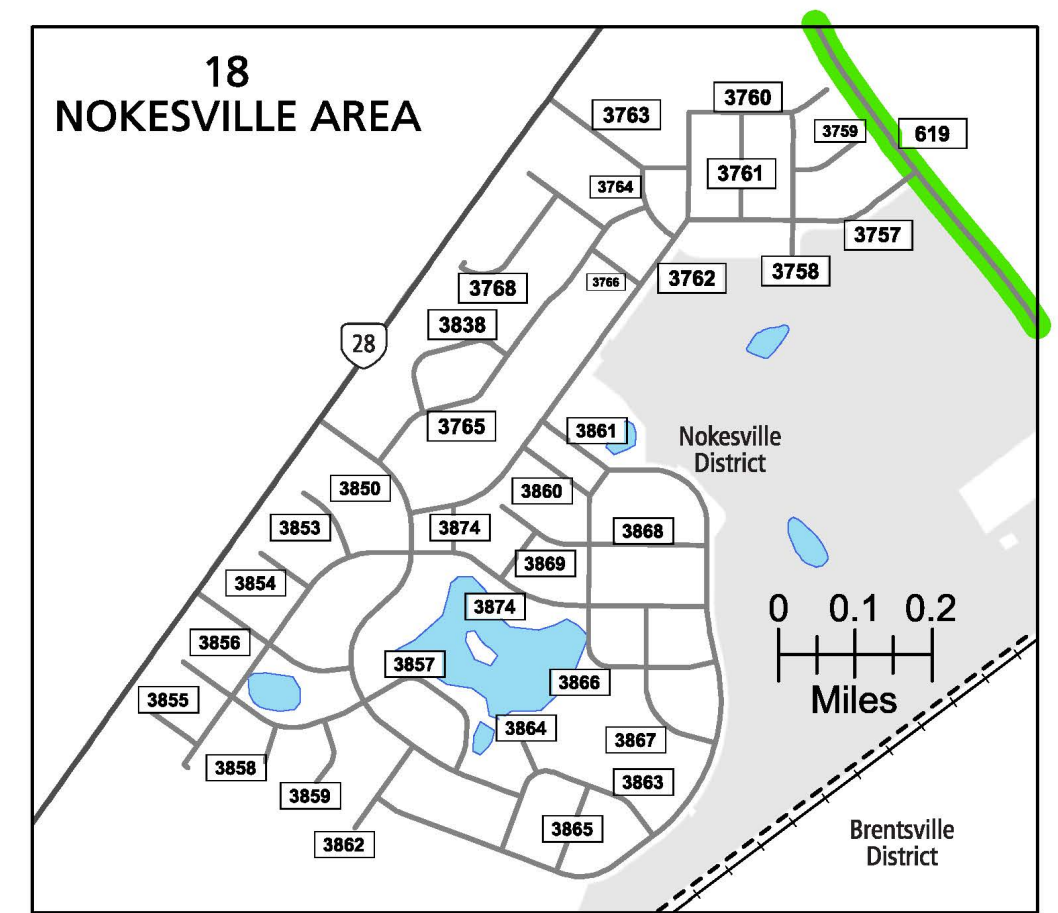
2 WEST OF SUDLEY MOUNTAIN AREA



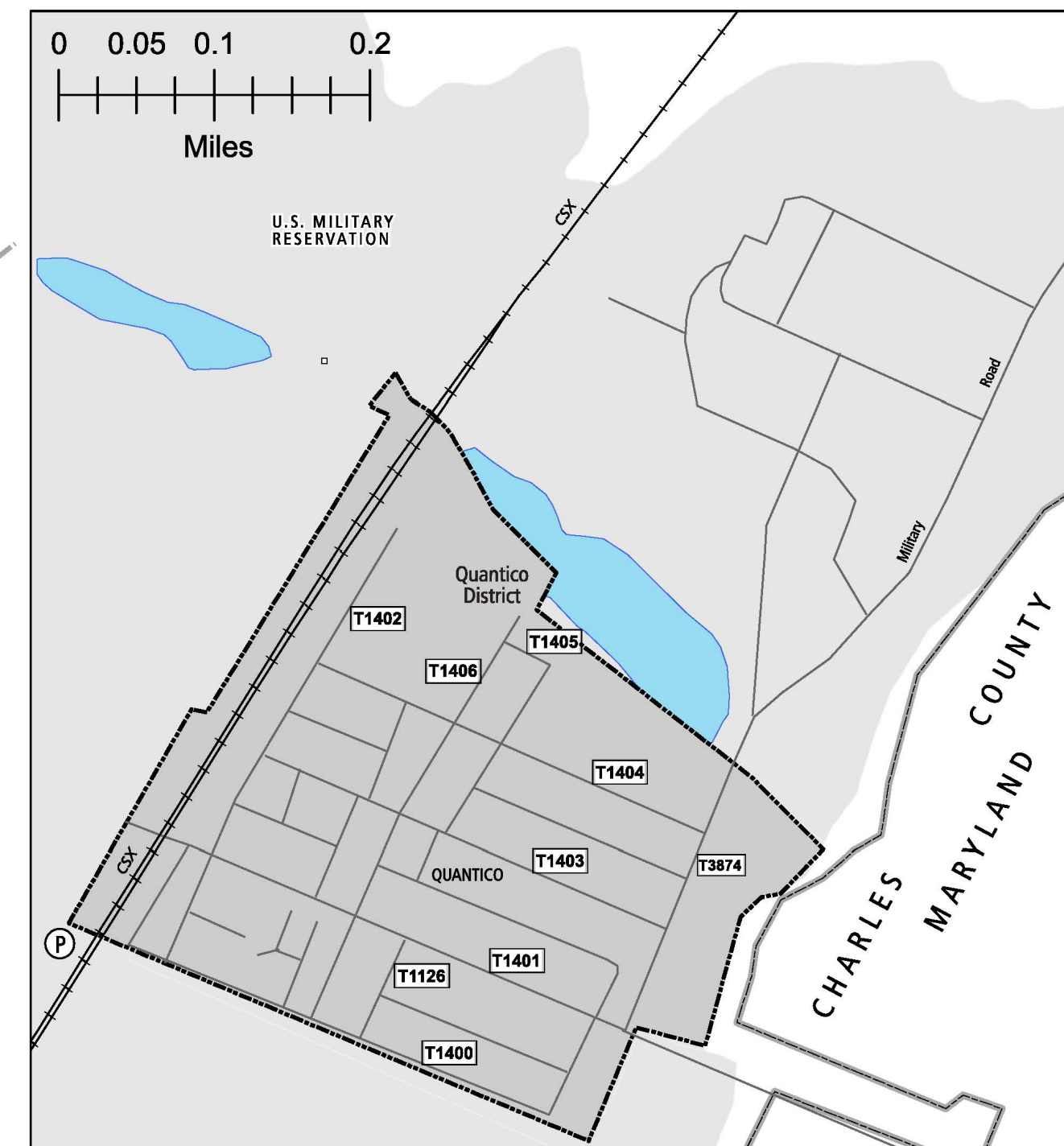
3 SUDLEY MOUNTAIN AREA



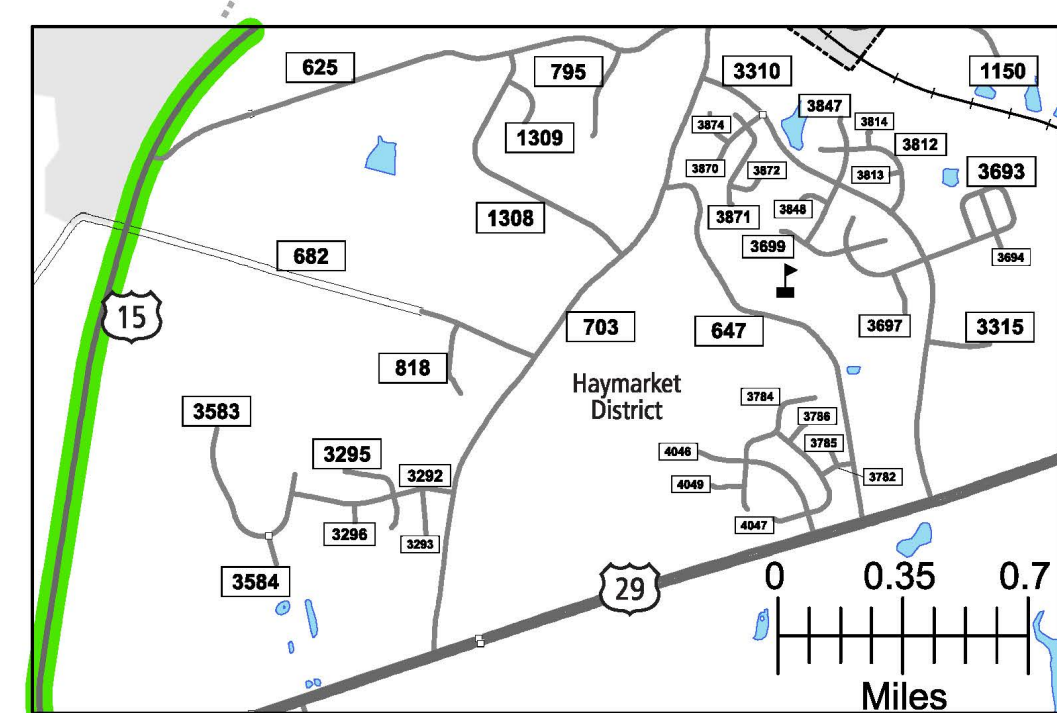
4 HAYMARKET AREA



18 NOKESVILLE AREA



13 QUANTICO AREA



15 AREA SOUTH OF HAYMARKET