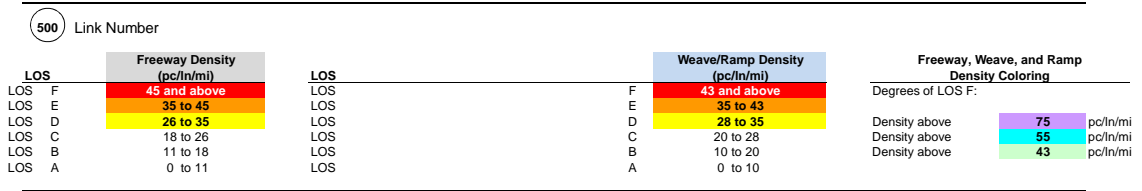
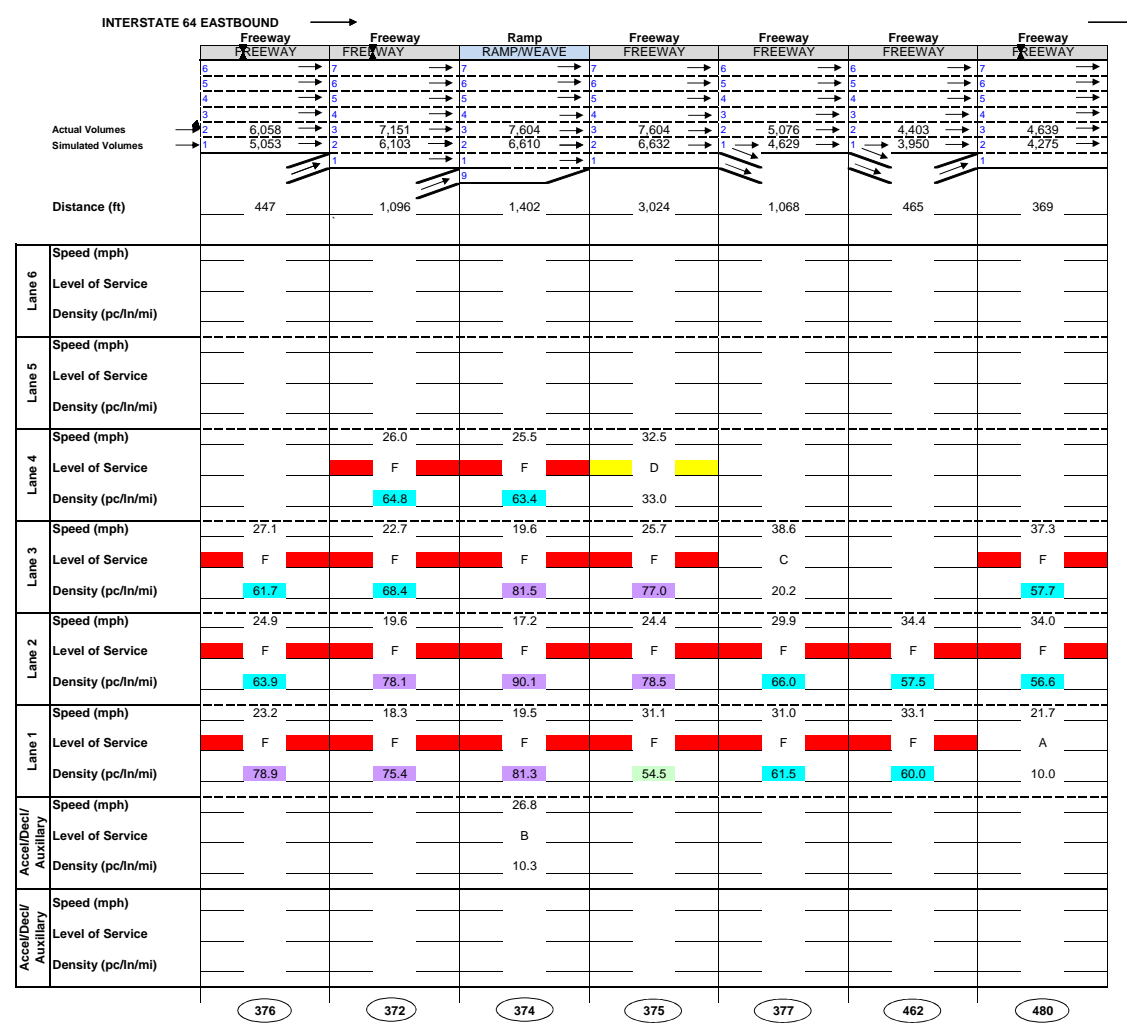
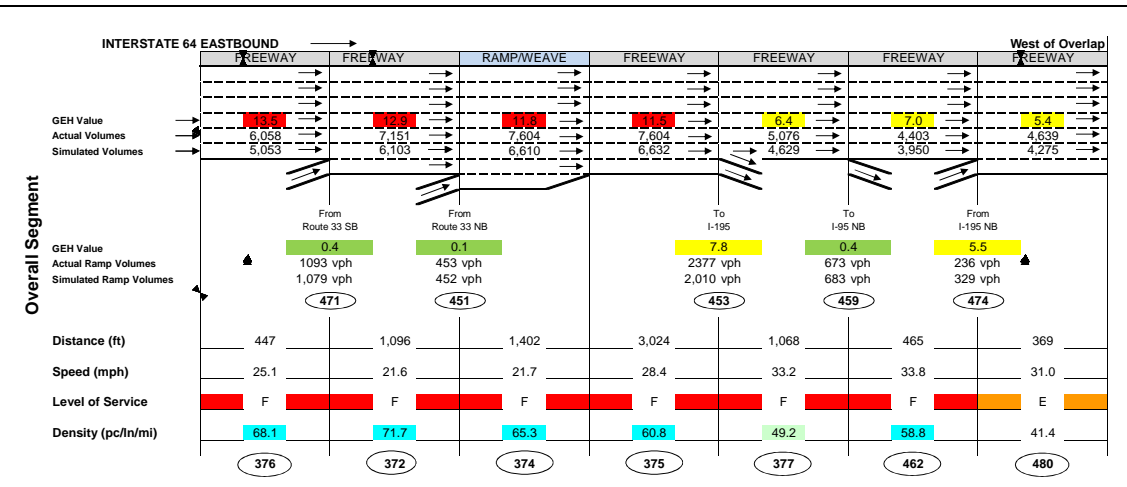
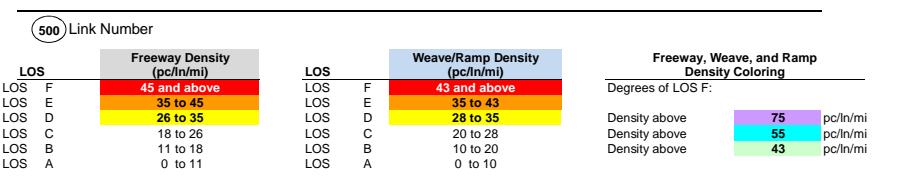


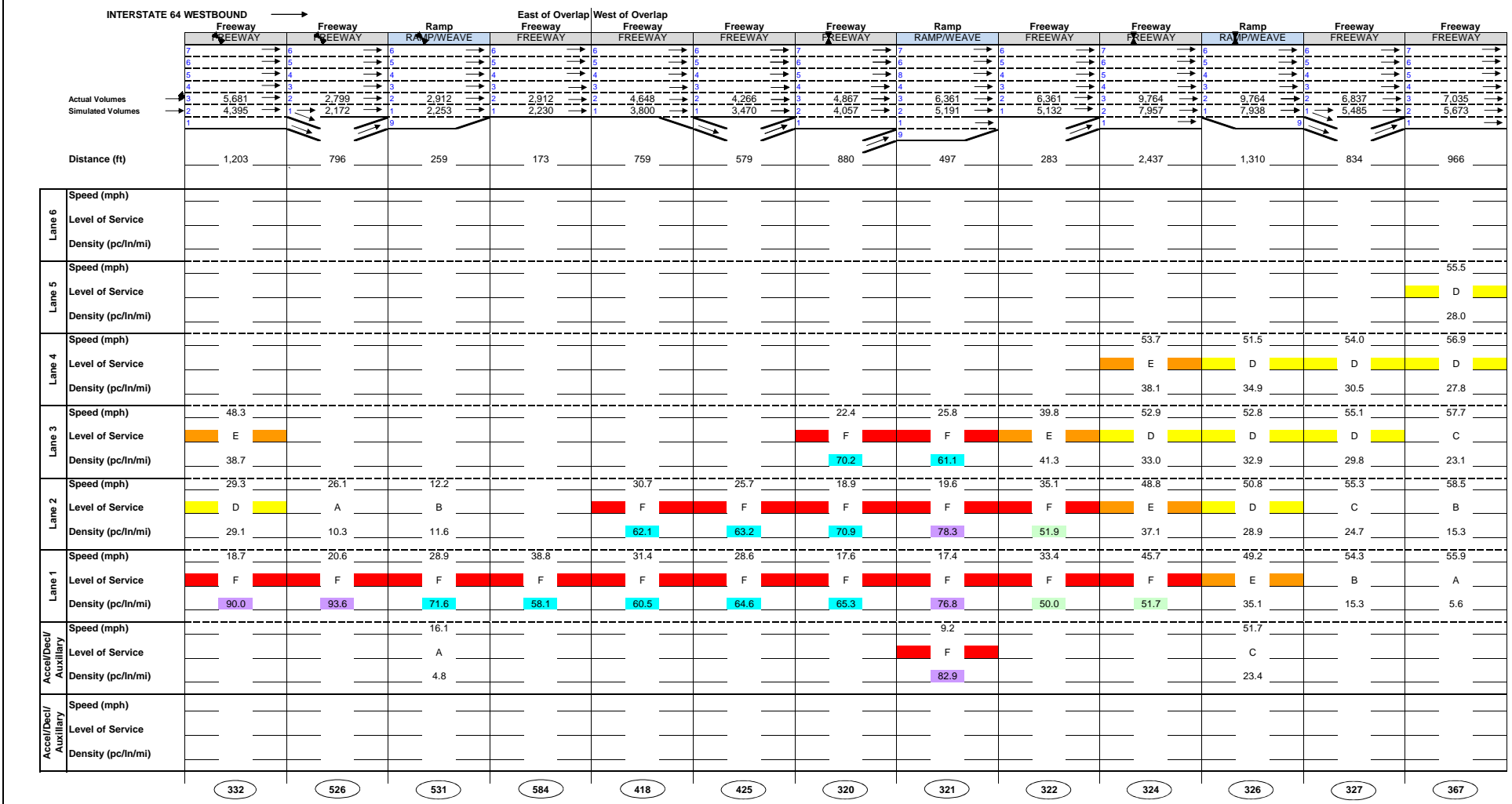
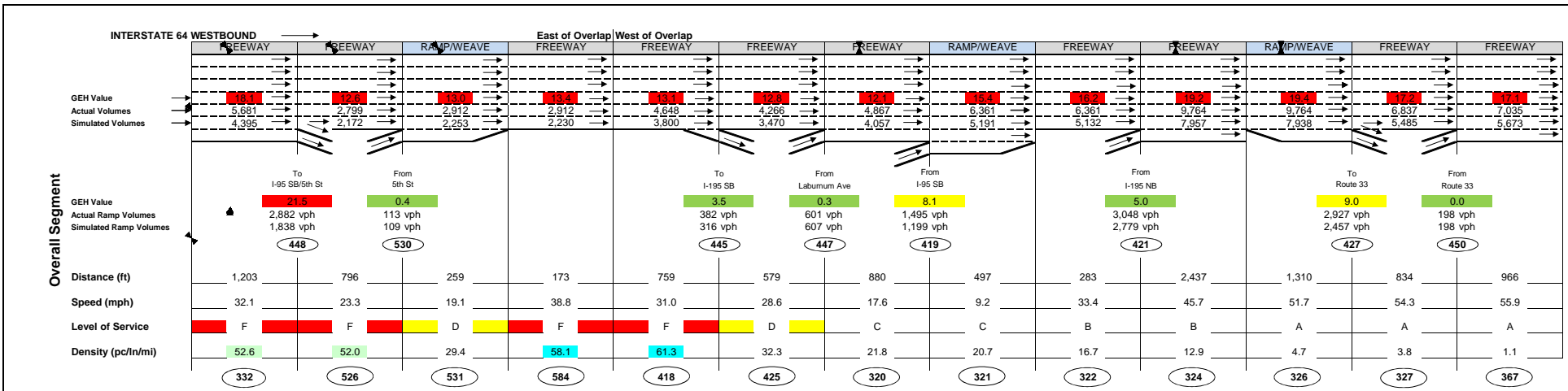
LEGEND





LEGEND





LEGEND

(500) Link Number

LOS	Freeway Density (pc/n/mi)	LOS	Weave/Ramp Density (pc/n/mi)	Freeway, Weave, and Ramp Density Coloring
LOS F	45 and above	LOS F	43 and above	Degrees of LOS F:
LOS E	35 to 45	LOS E	35 to 43	Density above 75 pc/n/mi
LOS D	26 to 35	LOS D	28 to 35	Density above 55 pc/n/mi
LOS C	18 to 26	LOS C	20 to 28	Density above 43 pc/n/mi
LOS B	11 to 18	LOS B	10 to 20	
LOS A	0 to 11	LOS A	0 to 10	

INTERSTATE 195 NORTHBOUND

	Freeway	Ramp/Weave	Freeway	Freeway	Freeway	Ramp/Weave	Freeway
GEH Value	3.3	3.6	3.8	3.8	4.6	4.8	3.8
Actual Volumes	5,871	5,871	5,387	5,387	2,339	2,339	2,103
Simulated Volumes	5,618	5,598	5,114	5,114	2,264	2,250	1,932
		To Laburnum Ave		To I-64 WB		To I-95 SB	
GEH Value		1.3		4.3		5.5	
Actual Ramp Volumes		485 vph		3048 vph		236 vph	
Simulated Ramp Volumes		457 vph		2,816 vph		329 vph	
		475		472		474	
Distance (ft)	1,262	308	668	668	476	139	330
Speed (mph)	37.4	37.5	32.8	32.8	46.2	41.9	39.5
Level of Service	F	E	F	F	C	B	C
Density (pc/ln/mi)	51.3	41.7	56.4	56.4	25.8	18.0	20.3
	385	382	383	383	473	535	575

INTERSTATE 195 NORTHBOUND

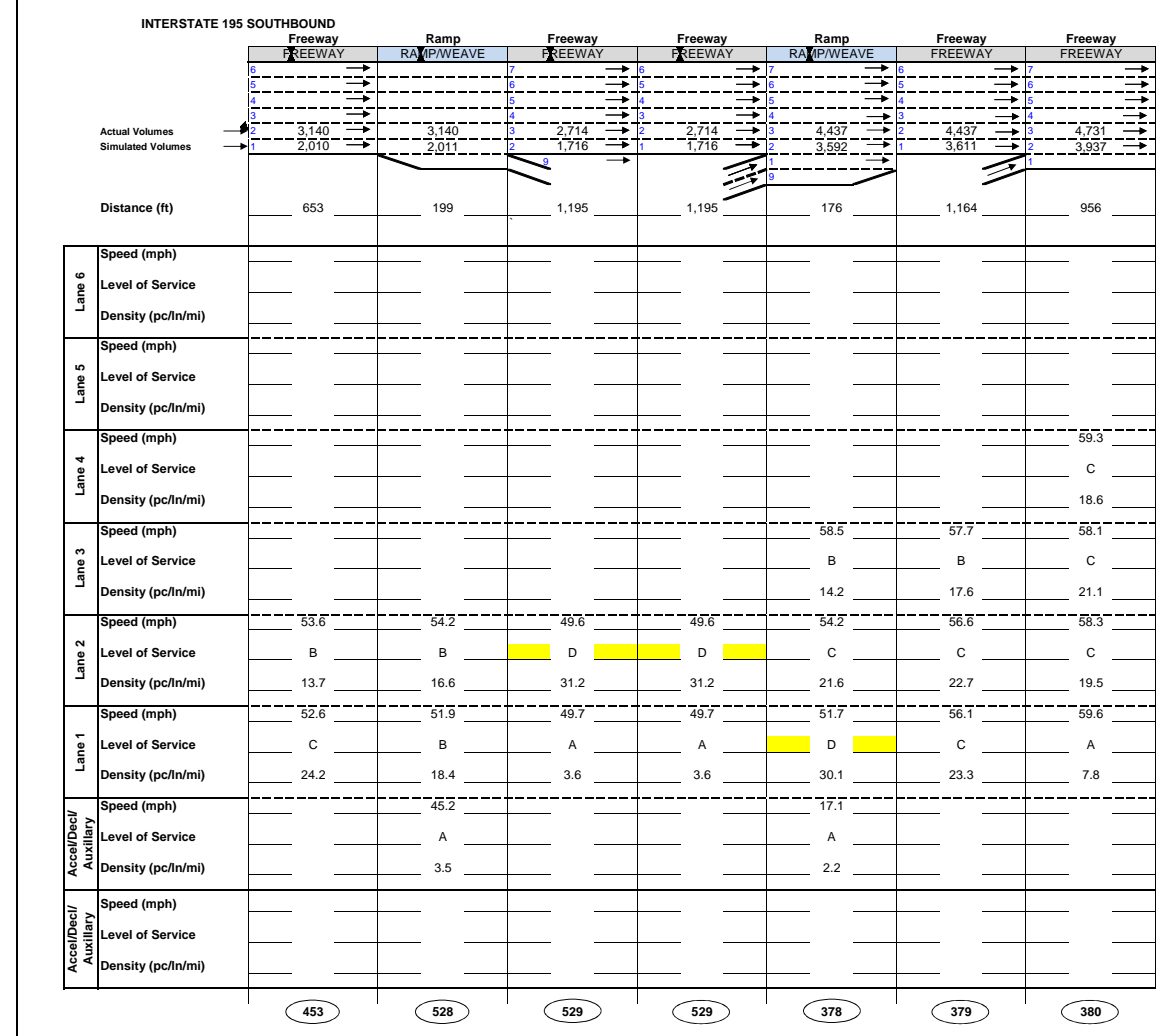
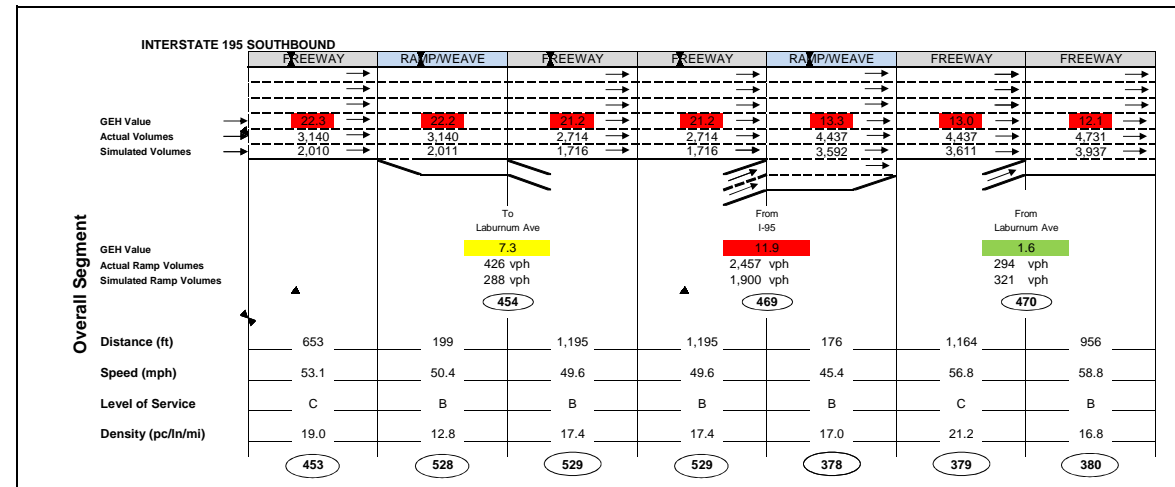
	Freeway	Ramp	Freeway	Freeway	Freeway	Ramp	Freeway
Actual Volumes	5,871	5,871	5,387	5,387	2,339	2,339	2,103
Simulated Volumes	5,618	5,598	5,114	5,114	2,264	2,250	1,932
Distance (ft)	1,262	308	668	668	476	139	330
Speed (mph)							
Level of Service							
Density (pc/ln/mi)							
Lane 6							
Lane 5							
Lane 4							
Lane 3	33.4	26.7	23.4	23.4		46.0	
Lane 2	38.2	33.0	27.7	27.7	48.1	42.2	30.9
Lane 1	40.6	43.2	47.2	47.2	44.3	37.5	48.0
Accel/Decel/Auxiliary		47.0					
Accel/Decel/Auxiliary							
	385	382	383	383	473	535	575

LEGEND

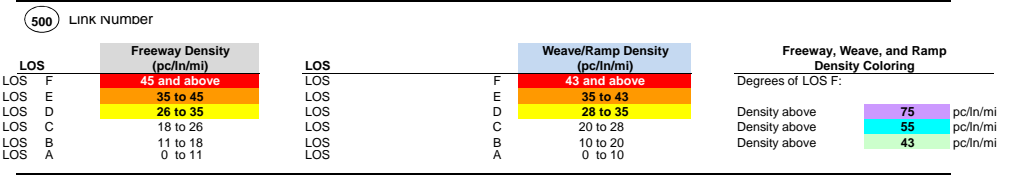
500	LINK NUMBER			
LOS F	Freeway Density (pc/ln/mi) 45 and above	LOS F	Weave/Ramp Density (pc/ln/mi) 43 and above	Freeway, Weave, and Ramp Density Coloring
LOS E	35 to 45	LOS E	35 to 43	Degrees of LOS F:
LOS D	26 to 35	LOS D	28 to 35	Density above 75 pc/ln/mi
LOS C	18 to 26	LOS C	20 to 28	Density above 55 pc/ln/mi
LOS B	11 to 18	LOS B	10 to 20	Density above 43 pc/ln/mi
LOS A	0 to 11	LOS A	0 to 10	

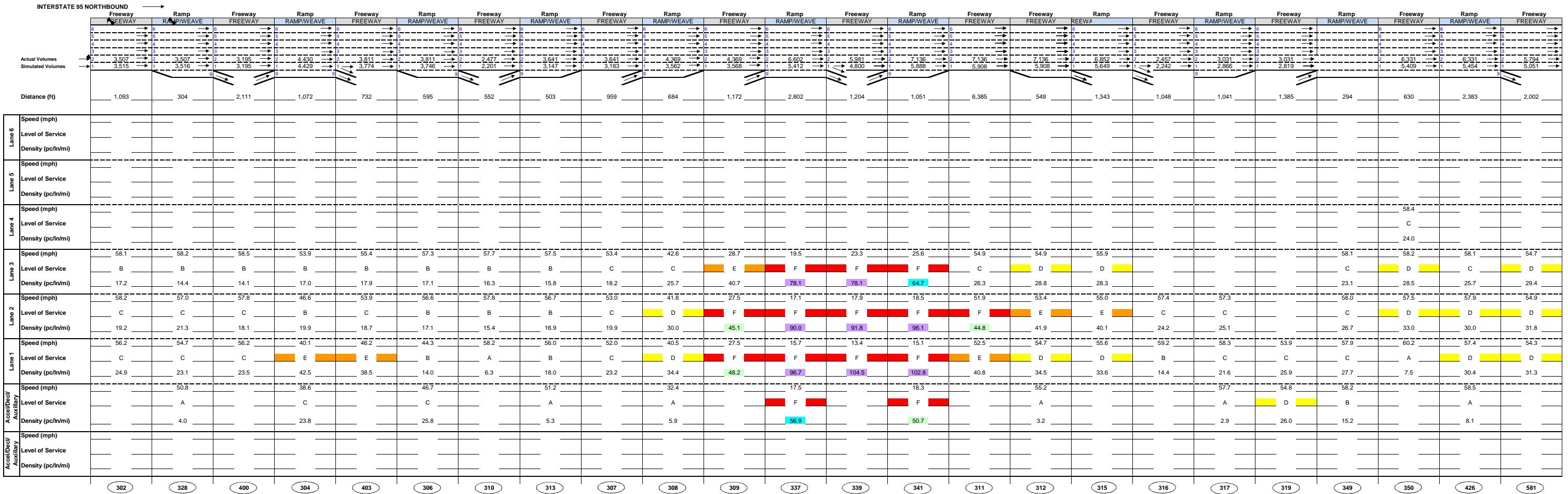
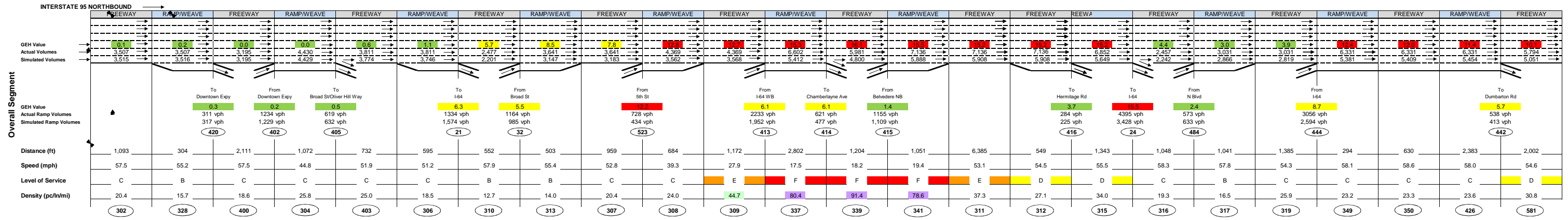


Figure LONG 5
I-64 and I-95 Overlap Report
Northbound I-195
AM 2035 Build Option 2 Peak Hour MOE's
7:30 - 8:30 AM



LEGEND





LEGEND

500 Link Number

LOS	Freeway Density (pc/n/mi)	LOS	Weave/Ramp Density (pc/n/mi)
LOS F	45 and above	LOS F	43 and above
LOS E	35 to 45	LOS E	35 to 43
LOS D	25 to 35	LOS D	28 to 35
LOS C	18 to 26	LOS C	20 to 28
LOS B	11 to 18	LOS B	10 to 20
LOS A	0 to 11	LOS A	0 to 10

Degrees of LOS F:

- Density above 75 pc/n/mi
- Density above 55 pc/n/mi
- Density above 43 pc/n/mi

INTERSTATE 95 SOUTHBOUND		FREEWAY	RAMP/WEAVE	FREEWAY	RAMP/WEAVE	FREEWAY	RAMP/WEAVE	FREEWAY	RAMP/WEAVE	FREEWAY	RAMP/WEAVE	FREEWAY	RAMP/WEAVE	FREEWAY	RAMP/WEAVE	FREEWAY	RAMP/WEAVE	FREEWAY	RAMP/WEAVE	FREEWAY		
Actual Volumes		4,094	4,679	4,679	4,679	1,942	7,021	6,293	7,047	7,047	7,047	6,837	8,098	3,951	6,098	5,931	7,042	6,187	5,085	5,950	5,950	
Simulated Volumes		4,638	4,654	4,638	4,628	1,936	5,223	5,035	5,796	5,781	5,772	5,619	6,804	3,569	5,310	5,162	6,140	5,495	4,554	5,406	5,406	
Actual Ramp Volumes		0.0	0.4	0.6	0.7	0.1	23.0	19.7	19.6	15.6	15.8	15.6	15.6	6.2	10.4	10.3	11.1	9.1	7.6	7.2	7.2	
Simulated Ramp Volumes		0.0	0.4	0.6	0.7	0.1	23.0	19.7	19.6	15.6	15.8	15.6	15.6	6.2	10.4	10.3	11.1	9.1	7.6	7.2	7.2	
Distance (ft)		2,533	1,026	2,533	1,569	1,400	1,825	3,355	577	6,618	844	1,967	789	3,558	1,011	1,327	722	1,038	1,202	454	1,240	
Speed (mph)		58.4	58.4	58.4	52.0	56.4	17.5	19.6	17.9	26.6	32.1	34.4	39.8	57.4	53.9	52.4	36.1	53.4	57.4	52.1	57.2	
Level of Service		C	C	C	C	B	F	F	F	F	F	F	F	E	C	C	D	E	C	D	C	D
Density (pc/In/mi)		20.0	20.1	20.0	22.9	11.5	75.2	86.6	79.0	72.7	57.5	59.8	43.8	20.8	24.5	33.3	42.9	25.6	26.5	25.2	31.5	
		354	355	354	356	365	384	387	441	386	390	394	397	292	291	510	289	286	284	283	297	

INTERSTATE 95 SOUTHBOUND		Freeway	Ramp	Freeway	Ramp	Freeway	Ramp	Freeway	Ramp	Freeway	Ramp	Freeway	Ramp	Freeway	Ramp	Freeway	Ramp	Ramp	Freeway	Ramp	Freeway	
Actual Volumes		4,094	4,679	4,679	4,679	1,942	7,021	6,293	7,047	7,047	7,047	6,837	8,098	3,951	6,098	5,931	7,042	6,187	5,085	5,950	5,950	
Simulated Volumes		4,638	4,654	4,638	4,628	1,936	5,223	5,035	5,796	5,781	5,772	5,619	6,804	3,569	5,310	5,162	6,140	5,495	4,554	5,406	5,406	
Distance (ft)		2,533	1,026	2,533	1,569	1,400	1,825	3,355	577	6,618	844	1,967	789	3,558	1,011	1,327	722	1,038	1,202	454	1,240	
Speed (mph)		58.4	58.4	58.4	52.0	56.4	17.5	19.6	17.9	26.6	32.1	34.4	39.8	57.4	53.9	52.4	36.1	53.4	57.4	52.1	57.2	
Level of Service		C	C	C	C	B	F	F	F	F	F	F	F	E	C	C	D	E	C	D	C	D
Density (pc/In/mi)		20.0	20.1	20.0	22.9	11.5	75.2	86.6	79.0	72.7	57.5	59.8	43.8	20.8	24.5	33.3	42.9	25.6	26.5	25.2	31.5	
		354	355	354	356	365	384	387	441	386	390	394	397	292	291	510	289	286	284	283	297	
Lane 6																						
Lane 5																						
Lane 4																						
Lane 3																						
Lane 2																						
Lane 1																						
Accel/Decel/Auxiliary																						

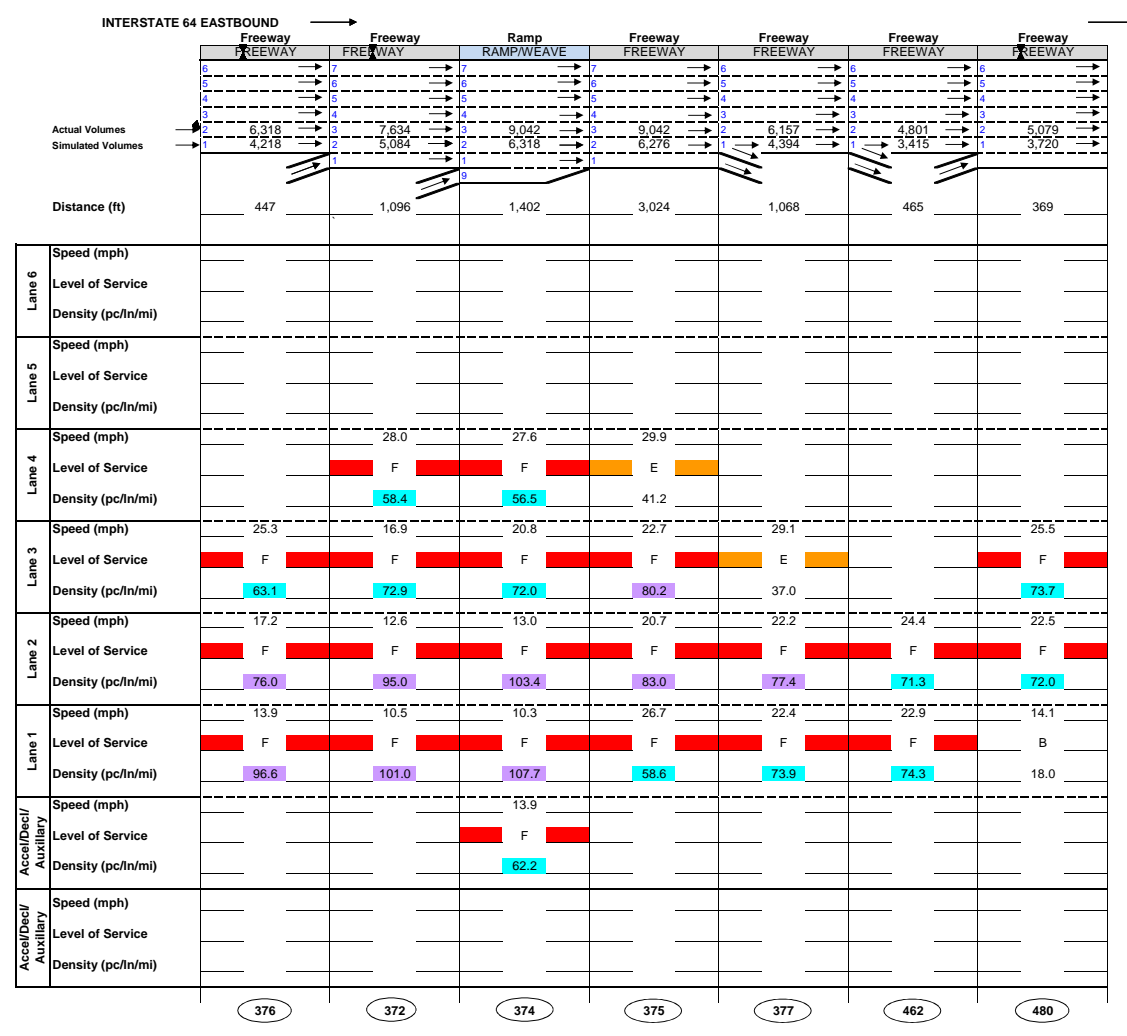
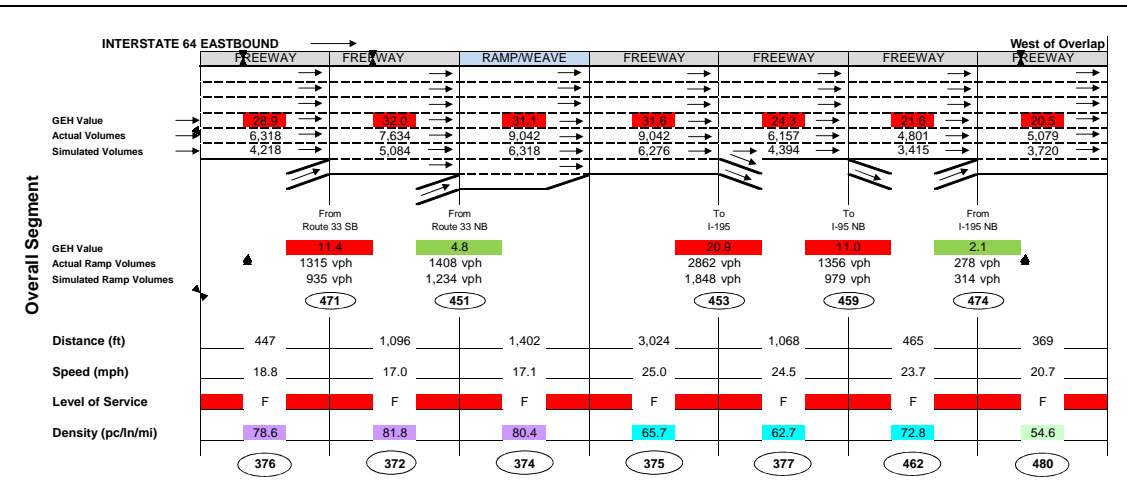
LEGEND

500	Link Number
LOS F	Freeway Density (pc/In/mi) 45 and above
LOS E	35 to 45
LOS D	26 to 35
LOS C	18 to 26
LOS B	11 to 18
LOS A	0 to 11
LOS F	Weave/Ramp Density (pc/In/mi) 43 and above
LOS E	35 to 43
LOS D	28 to 35
LOS C	20 to 28
LOS B	10 to 20
LOS A	0 to 10
Density above 75	pc/In/mi
Density above 55	pc/In/mi
Density above 43	pc/In/mi

Degrees of LOS F:



Figure LONG 8
I-64 and I-95 Overlap Report
Southbound I-95
PM 2035 Build Option 2 Peak Hour MOE's
4:30 - 5:30 PM

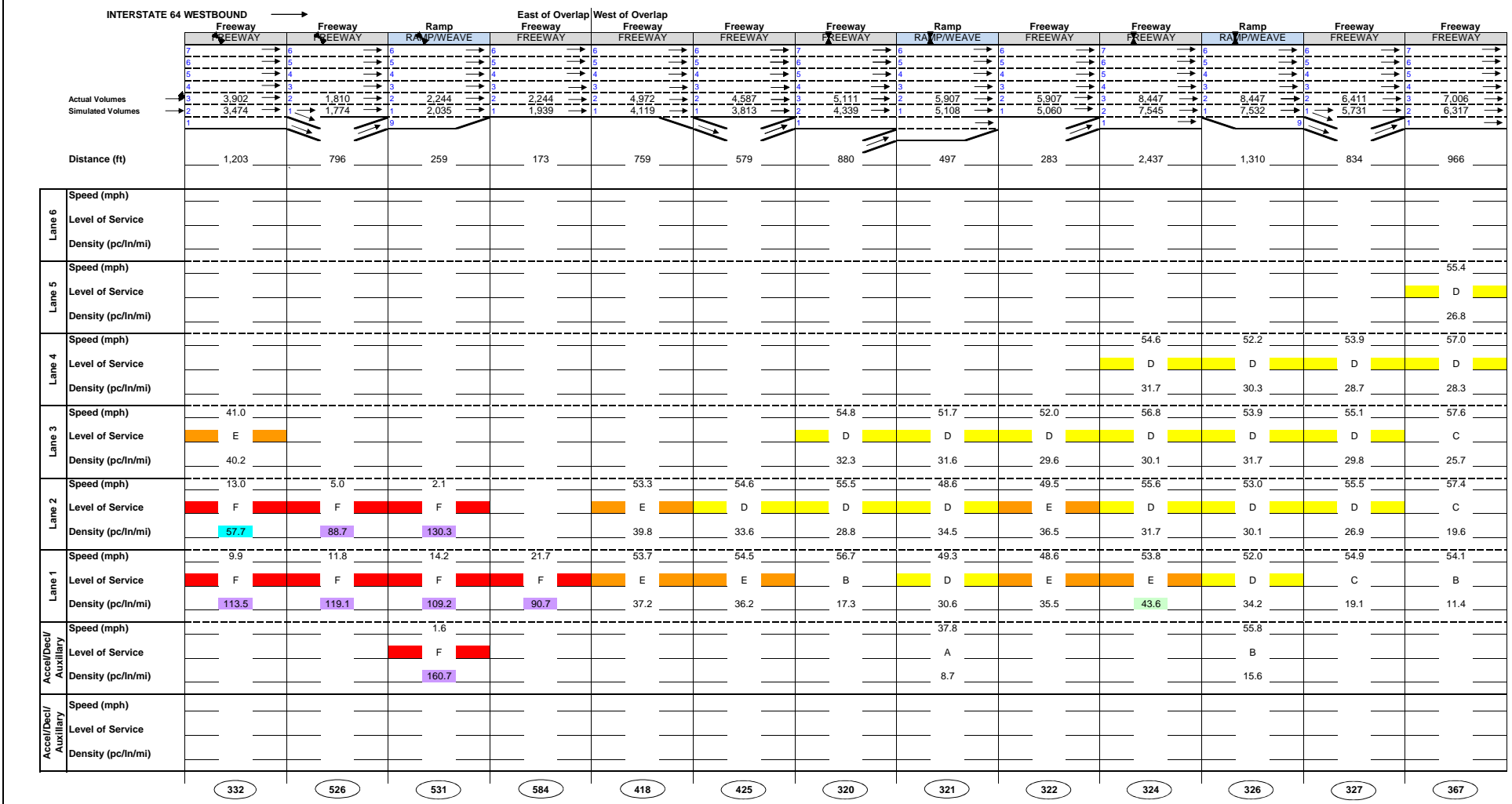
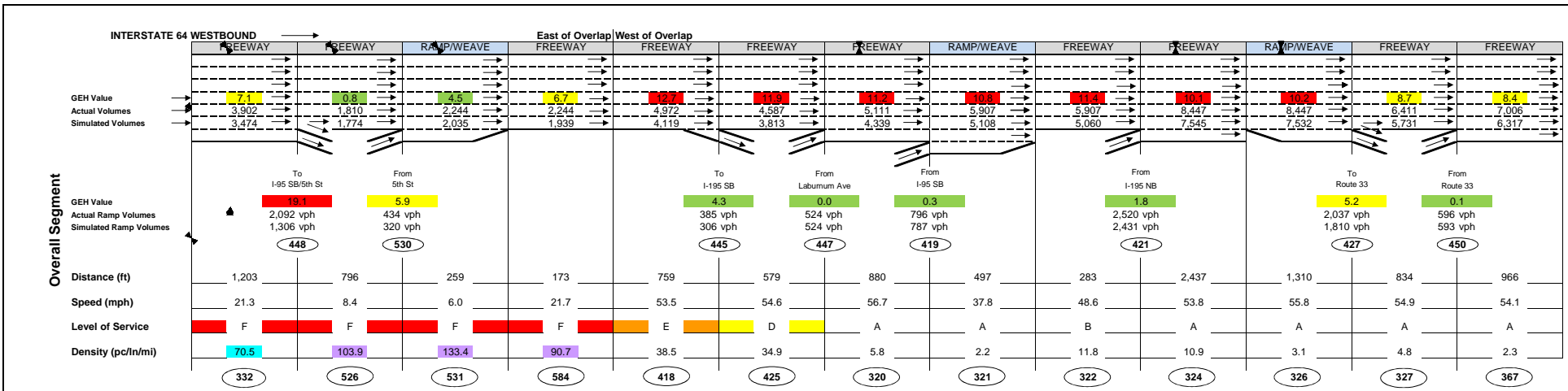


LEGEND

500 Link Number		Weave/Ramp Density (pc/ln/mi)		Freeway, Weave, and Ramp Density Coloring	
LOS F	45 and above	LOS F	43 and above	Degrees of LOS F:	
LOS E	35 to 45	LOS E	35 to 43	Density above	75 pc/ln/mi
LOS D	26 to 35	LOS D	28 to 35	Density above	55 pc/ln/mi
LOS C	18 to 26	LOS C	20 to 28	Density above	43 pc/ln/mi
LOS B	11 to 18	LOS B	10 to 20		
LOS A	0 to 11	LOS A	0 to 10		



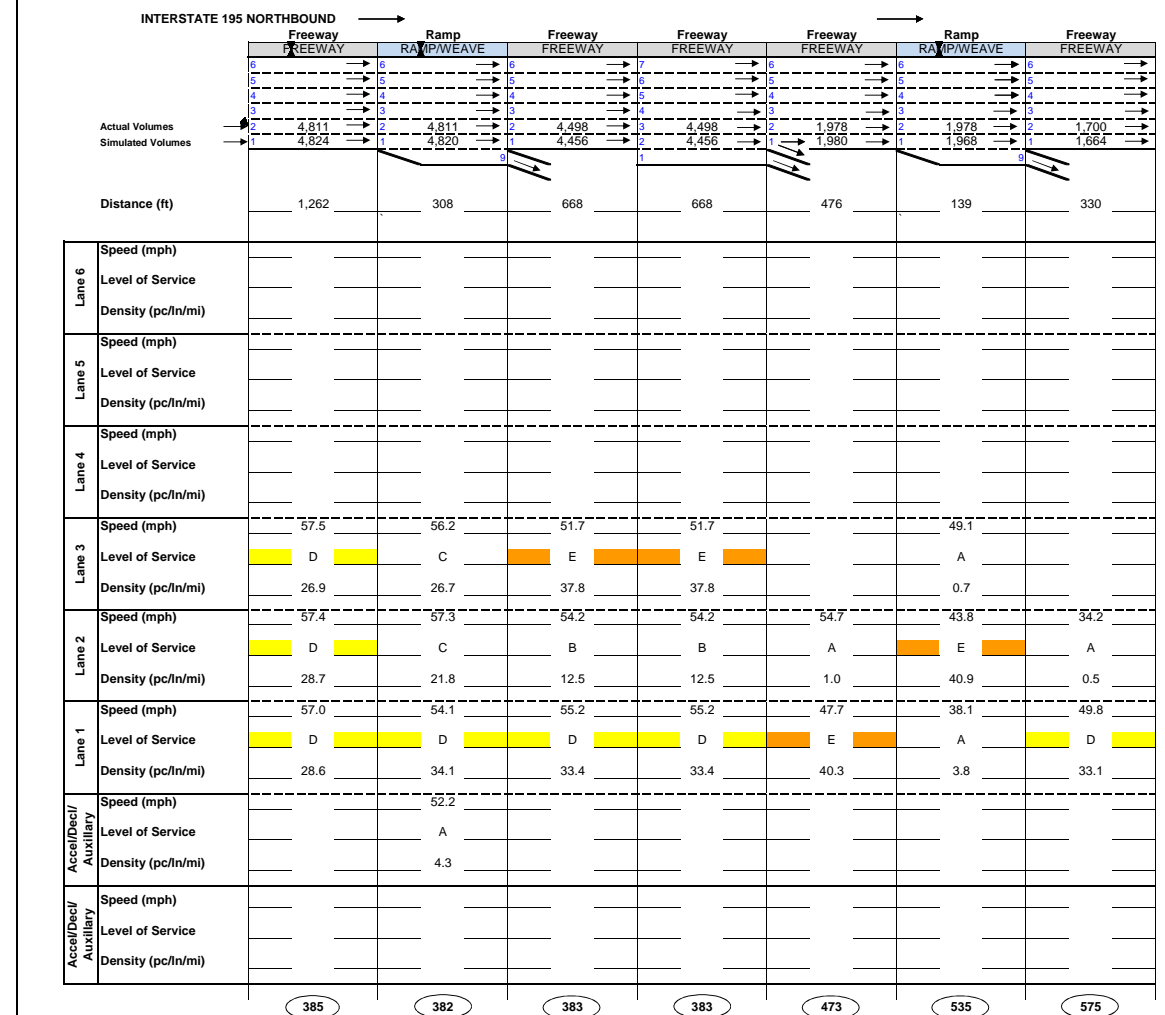
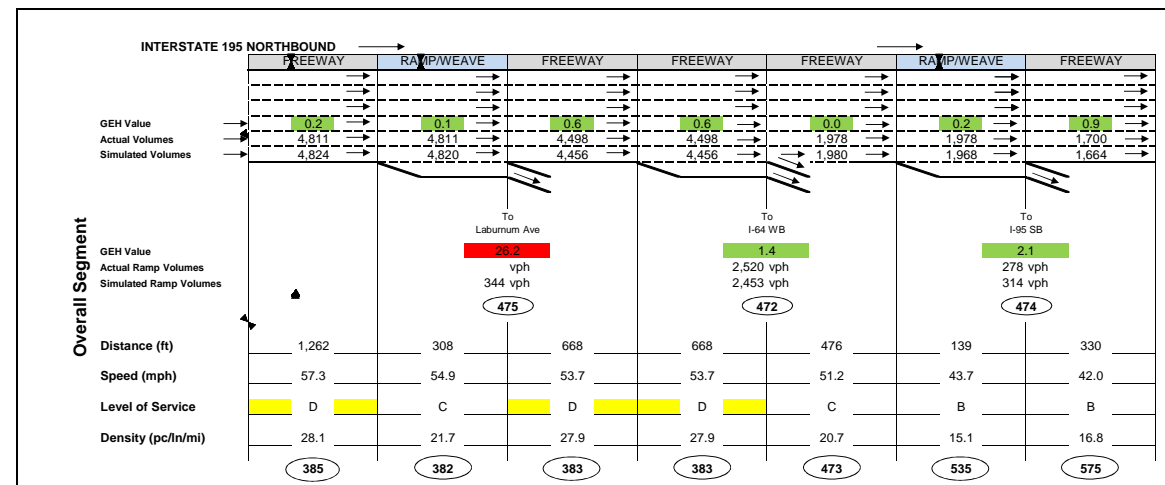
Figure LONG 9
I-64 and I-95 Overlap Report
Eastbound I-64
PM 2035 Build Option 2 Peak Hour MOE's
4:30 - 5:30 PM



LEGEND

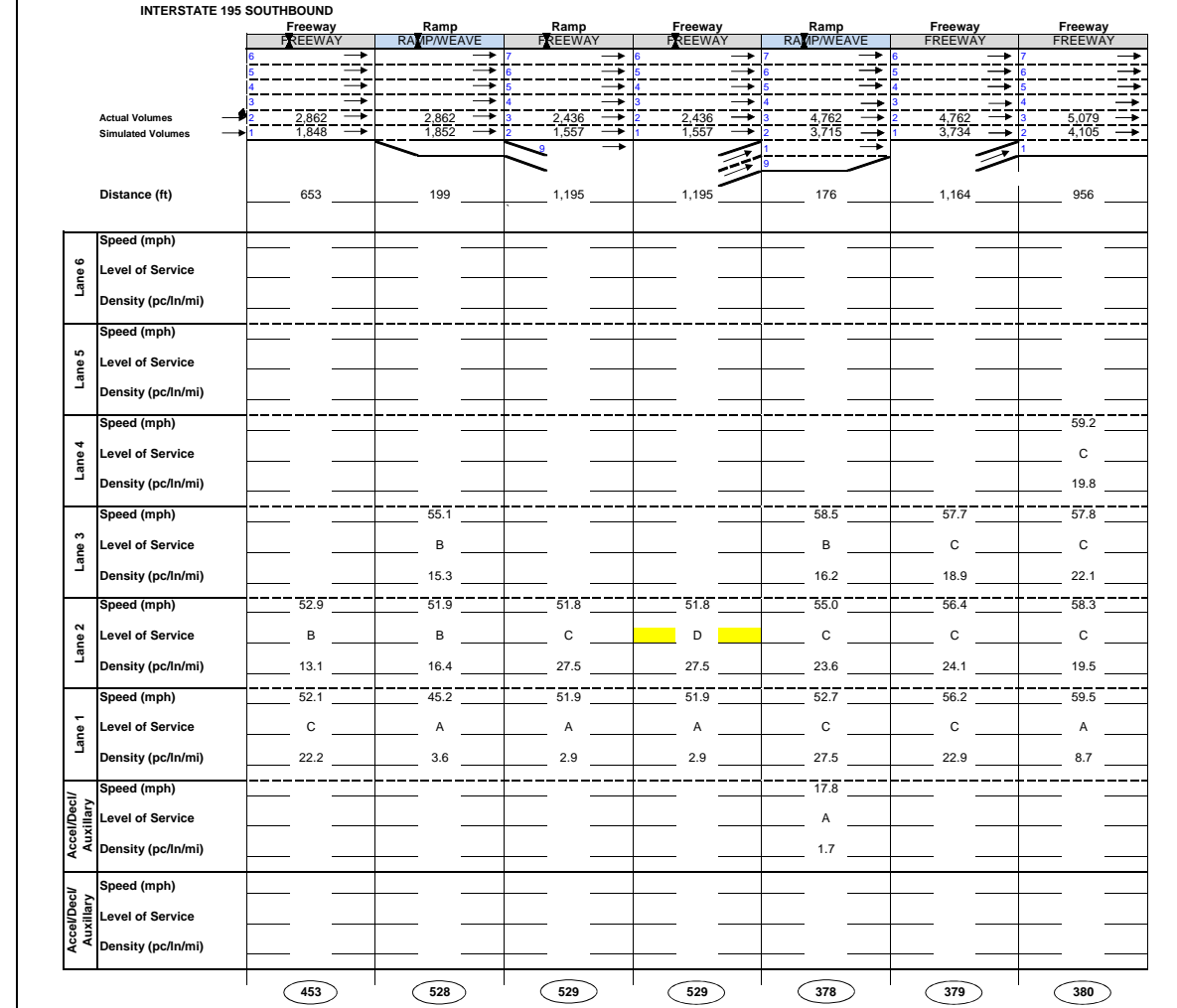
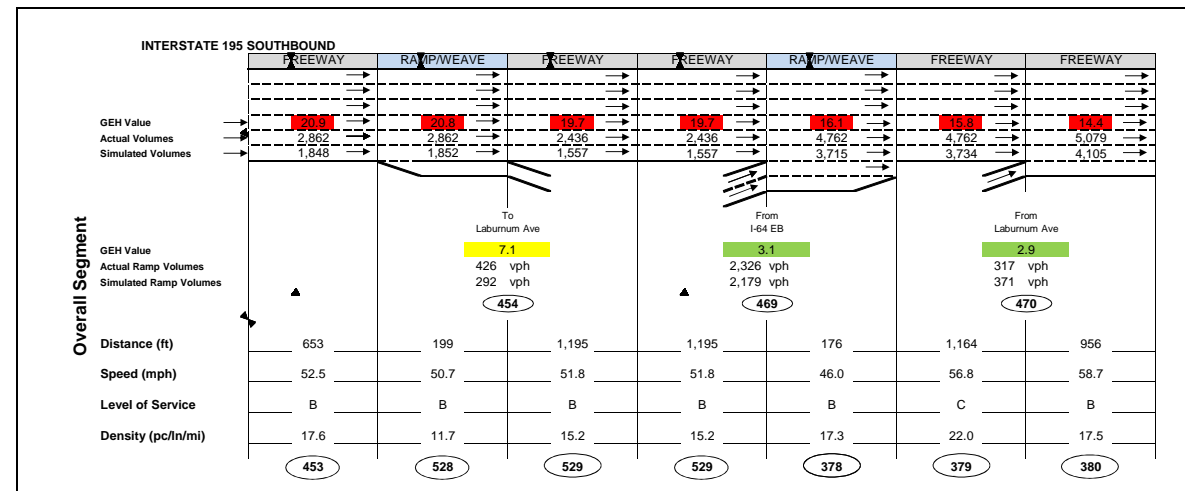
(500) Link Number

LOS	Freeway Density (pc/n/mi)	LOS	Weave/Ramp Density (pc/n/mi)	Freeway, Weave, and Ramp Density Coloring
LOS F	45 and above	LOS F	43 and above	Degrees of LOS F:
LOS E	35 to 45	LOS E	35 to 43	Density above 75 pc/n/mi
LOS D	26 to 35	LOS D	28 to 35	Density above 55 pc/n/mi
LOS C	18 to 26	LOS C	20 to 28	Density above 43 pc/n/mi
LOS B	11 to 18	LOS B	10 to 20	
LOS A	0 to 11	LOS A	0 to 10	

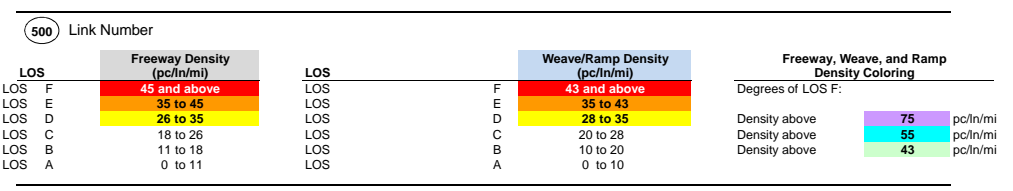


LEGEND

500	Link Number			
LOS F	Freeway Density (pc/in/mi) 45 and above	LOS F	Weave/Ramp Density (pc/in/mi) 43 and above	Density above 75 pc/in/mi
LOS E	35 to 45	LOS E	35 to 43	Density above 55 pc/in/mi
LOS D	26 to 35	LOS D	28 to 35	Density above 43 pc/in/mi
LOS C	18 to 26	LOS C	20 to 28	
LOS B	11 to 18	LOS B	10 to 20	
LOS A	0 to 11	LOS A	0 to 10	



LEGEND



Kimley-Horn and Associates, Inc.

Figure LONG 12
I-64 and I-95 Overlap Report
Southbound I-195
PM 2035 Build Option 2 Peak Hour MOE's
4:30 - 5:30 PM

I-95/I-64 Overlap Study
 2035 Build Option 2 Peak Hour Intersection Analyses Results

Table 1: Overall Intersection Results (730-830 AM)

North/South Street	East/West Street	Sig	Delay (sec)	LOS	Stopped Delay (sec)	Avg # of Stops	# Vehicles
Laburnum	I-64 EB offramp		6.8	A	0.5	0.1	669
Laburnum	I-195 NB offramp		4.1	A	0.1	0.1	1104
Laburnum	I-64 WB onramp		1.4	A	0.1	0.0	1952
N Boulevard	I-95 ramps	X	8.4	A	2.3	0.2	2089
Hermitage	Robin Hood	X	24.6	C	14.7	0.8	2020
Robin Hood	I-95 SB onramp		2.4	A	0.3	0.1	764
Leigh	Gilmer	X	24.4	C	17.6	0.6	1277
Chamberlayne	I-95 NB offramp		0.0	A	0.0	0.0	253
3rd St	Jackson St	X	17.8	B	9.7	0.6	1630
4th St	Jackson St	X	7.9	A	4.4	0.4	1132
5th St	Jackson St	X	15.9	B	10.5	0.6	1860
Broad St	College	X	7.2	A	4.3	0.3	2591
Broad St	14th St	X	12.3	B	6.3	0.4	3252
15th St	Franklin/Bank St	X	18.8	B	9.4	0.7	1271
15th St	Main St	X	19.9	B	12.8	0.7	2038
14th St	Main St	X	13.5	B	8.7	0.4	2704
14th St	Franklin St	X	16.2	B	10.2	0.6	1777
Broad St	17th St	X	64.0	E	22.4	1.4	3440
Broad St	18th St	X	27.1	C	17.3	0.8	2181
Jackson St	7th St	X	16.0	B	10.0	0.6	1315
Jackson St	8th St	X	13.5	B	8.4	0.6	933
7th St	Duval St	X	7.7	A	2.8	0.5	677
Belvedere	Leigh	X	32.6	C	21.7	0.9	3668
N Boulevard	Robin Hood	X	32.7	C	23.7	0.9	2759
Hermitage	I-95 NB offramp	X	7.3	A	1.0	0.4	945

I-95/I-64 Overlap Study
 2035 Build Option 2 Peak Hour Intersection Analyses Results

Table 1: Overall Intersection Results (430-530 PM)

North/South Street	East/West Street	Sig	Delay (sec)	LOS	Stopped Delay (sec)	Avg # of Stops	# Vehicles
Laburnum	I-64 EB offramp		7.0	A	0.7	0.1	714
Laburnum	I-195 NB offramp		2.6	A	0.0	0.0	1036
Laburnum	I-64 WB onramp		1.0	A	0.0	0.0	2112
N Boulevard	I-95 ramps	X	27.2	C	7.8	0.7	2626
Hermitage	Robin Hood	X	36.7	D	22.7	1.0	2017
Robin Hood	I-95 SB onramp		8.8	A	3.3	0.3	1102
Leigh	Gilmer	X	38.7	D	28.8	0.8	1229
Chamberlayne	I-95 NB offramp		0.0	A	0.0	0.0	920
3rd St	Jackson St	X	14.1	B	10.2	0.5	832
4th St	Jackson St	X	18.3	B	12.0	0.7	973
5th St	Jackson St	X	45.5	D	28.3	1.6	2037
Broad St	College	X	36.8	D	25.1	1.0	2229
Broad St	14th St	X	45.0	D	22.9	1.5	2902
15th St	Franklin/Bank St	X	14.6	B	8.4	0.5	917
15th St	Main St	X	22.0	C	15.8	0.7	1872
14th St	Main St	X	17.5	B	12.4	0.6	2404
14th St	Franklin St	X	18.0	B	11.6	0.6	1398
Broad St	17th St	X	17.8	B	9.0	0.6	2416
Broad St	18th St	X	18.7	B	12.9	0.6	2169
Jackson St	7th St	X	82.5	F	52.8	2.5	2134
Jackson St	8th St	X	47.8	D	23.3	1.8	1035
7th St	Duval St	X	10.7	B	5.4	0.5	926
Belvedere	Leigh	X	40.2	D	25.9	1.0	4384
N Boulevard	Robin Hood	X	44.0	D	27.2	1.2	3028
Hermitage	I-95 NB offramp	X	1.8	A	0.1	0.1	550

