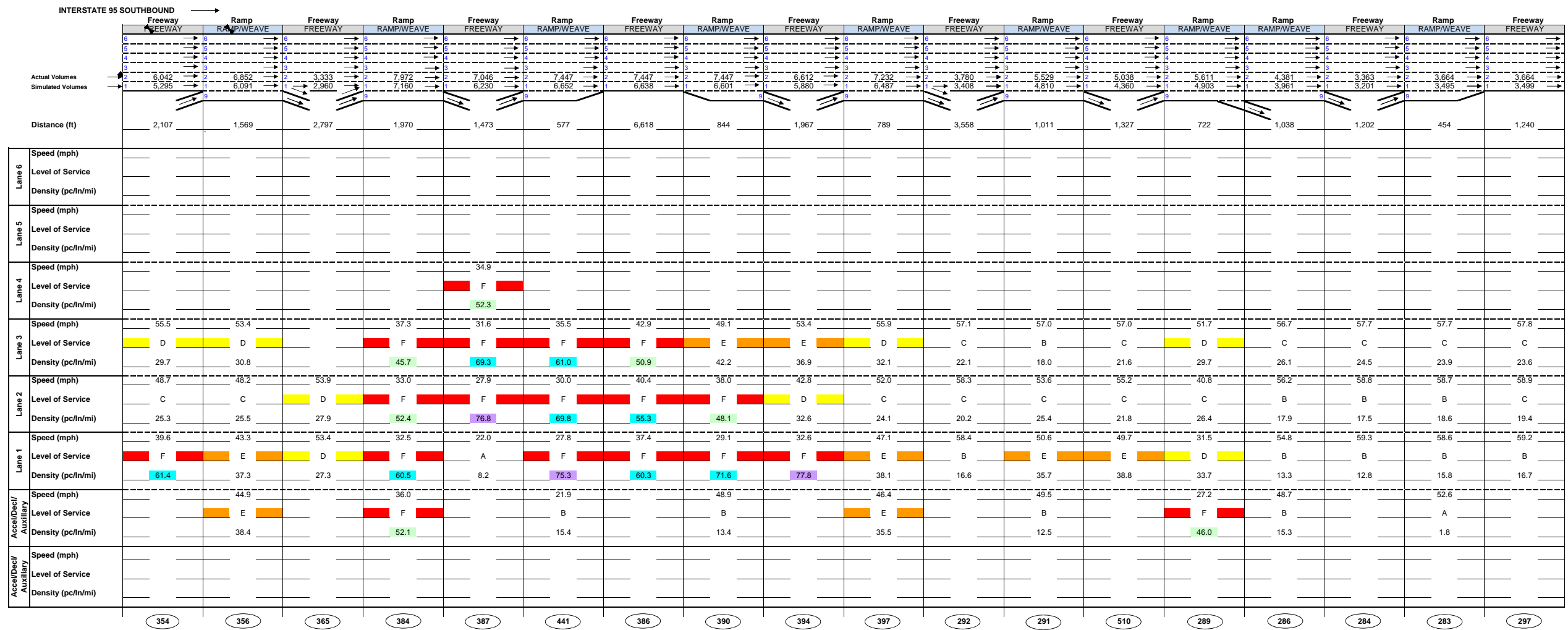
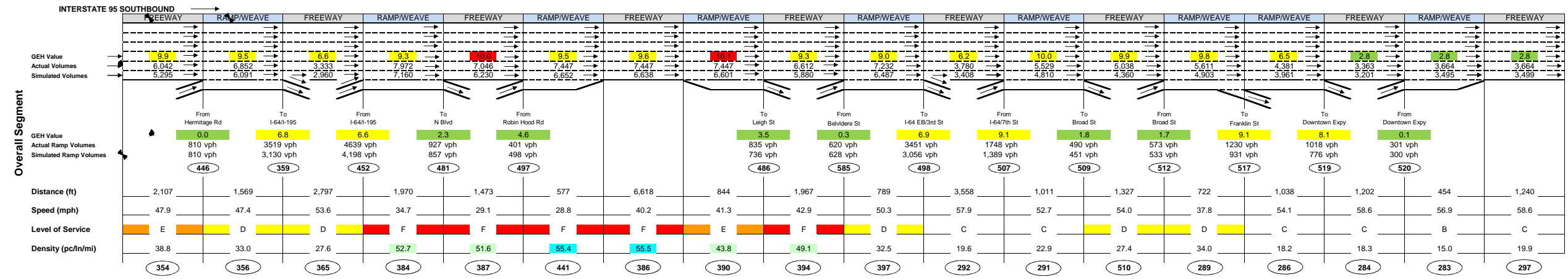
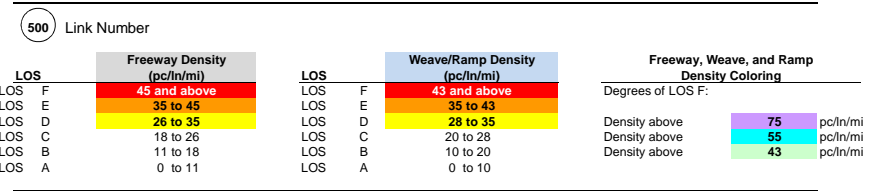


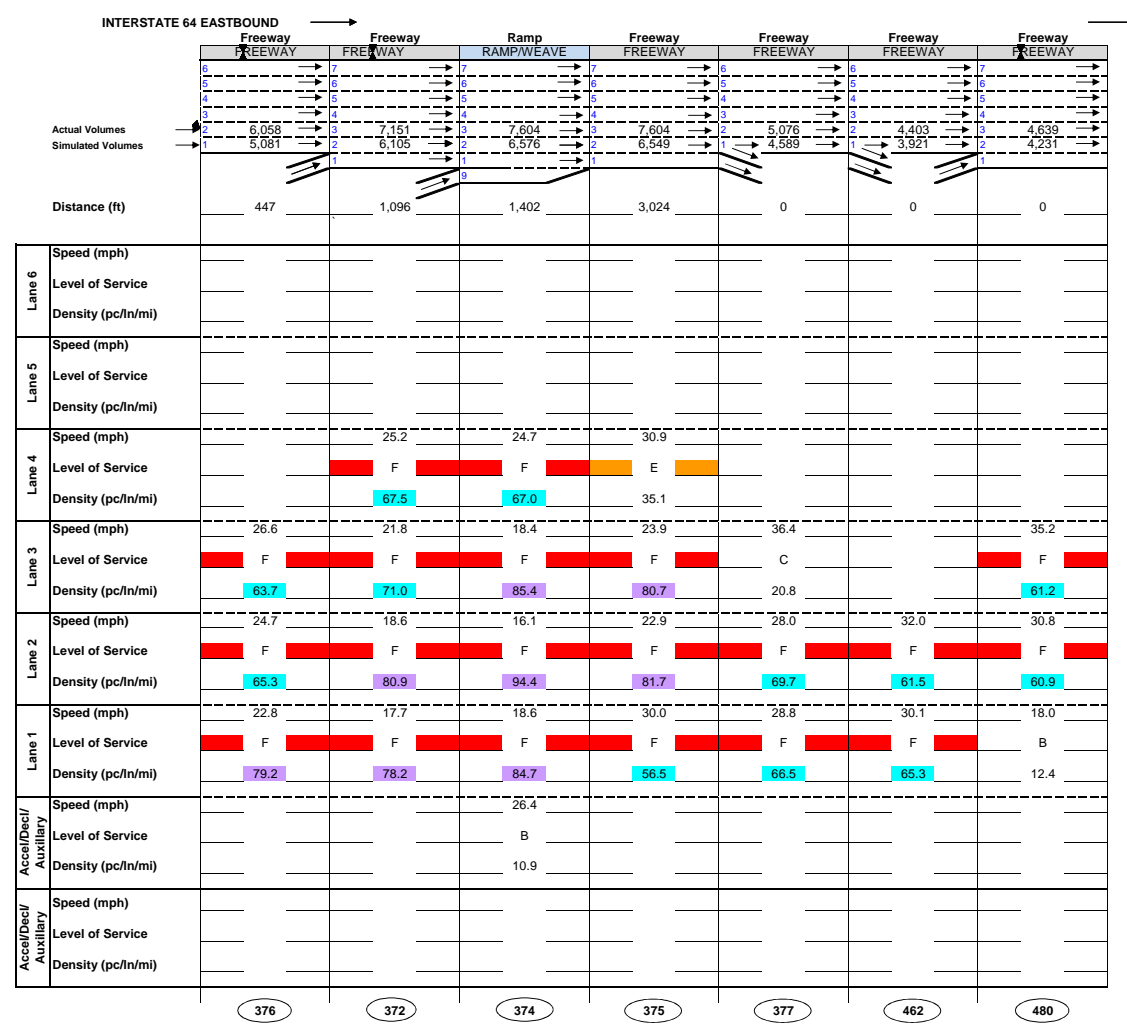
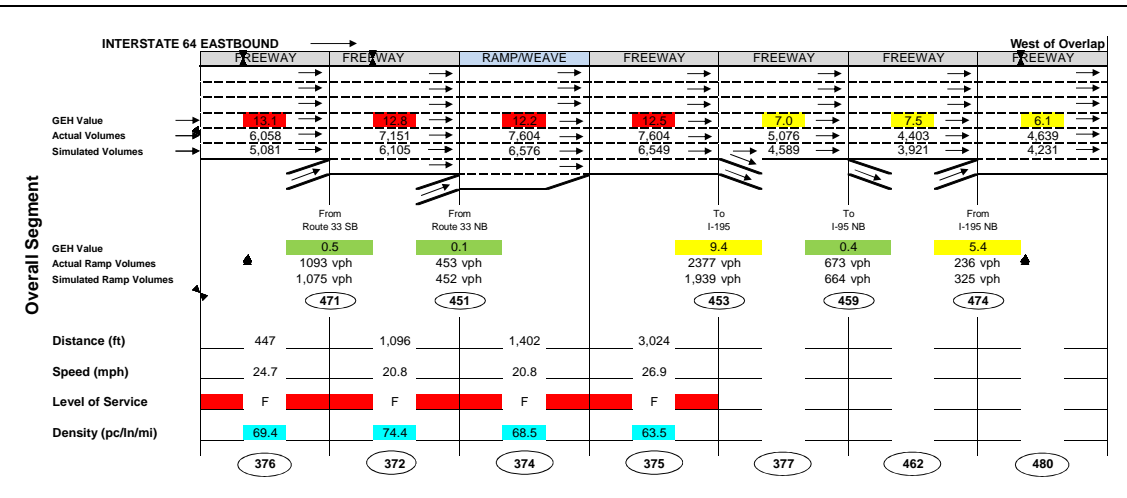
LEGEND

500	Link Number			
LOS F	Freeway Density (pc/ln/mi) 45 and above	LOS E	Weave/Ramp Density (pc/ln/mi) 43 and above	Degrees of LOS F: Density above 75 pc/ln/mi Density above 55 pc/ln/mi Density above 43 pc/ln/mi
LOS E	35 to 45	LOS F	35 to 43	
LOS D	26 to 35	LOS D	28 to 35	
LOS C	18 to 26	LOS C	20 to 28	
LOS B	11 to 18	LOS B	10 to 20	
LOS A	0 to 11	LOS A	0 to 10	



LEGEND



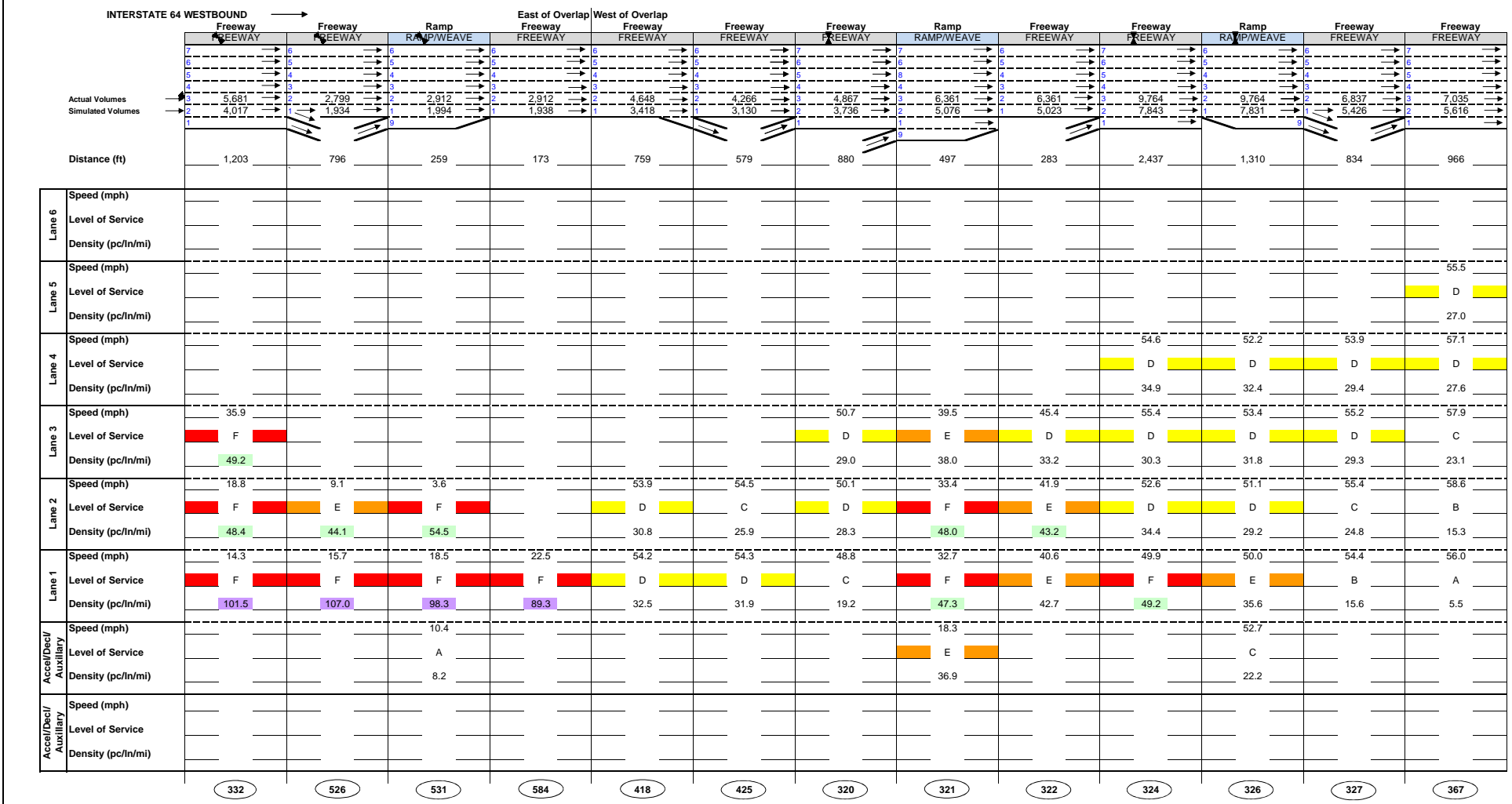
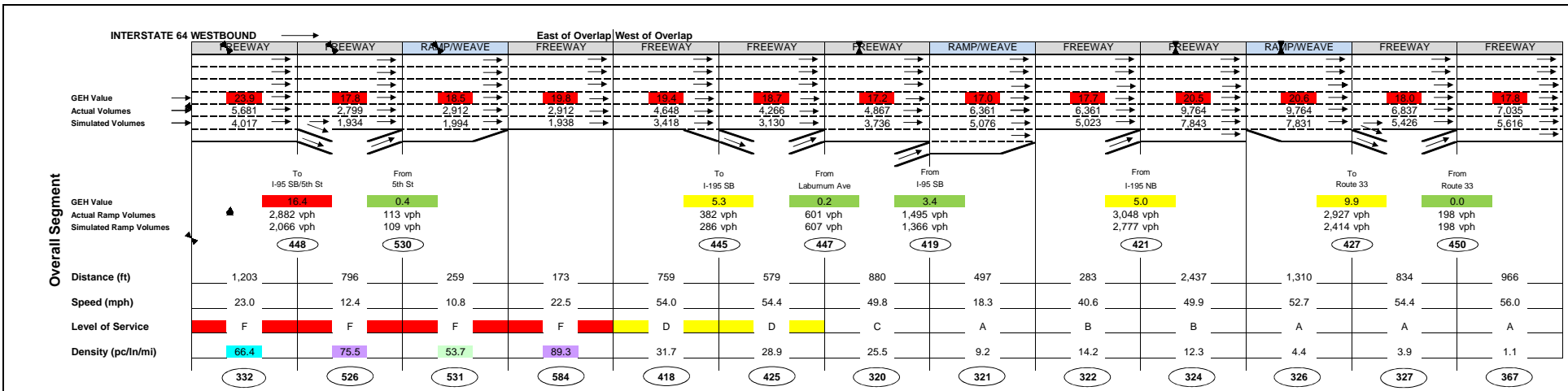


LEGEND

500 Link Number		Weave/Ramp Density (pc/in/mi)		Freeway, Weave, and Ramp Density Coloring	
LOS F	45 and above	LOS F	43 and above	Degrees of LOS F:	
LOS E	35 to 45	LOS E	35 to 43	Density above	75 pc/in/mi
LOS D	26 to 35	LOS D	28 to 35	Density above	55 pc/in/mi
LOS C	18 to 26	LOS C	20 to 28	Density above	43 pc/in/mi
LOS B	11 to 18	LOS B	10 to 20		
LOS A	0 to 11	LOS A	0 to 10		



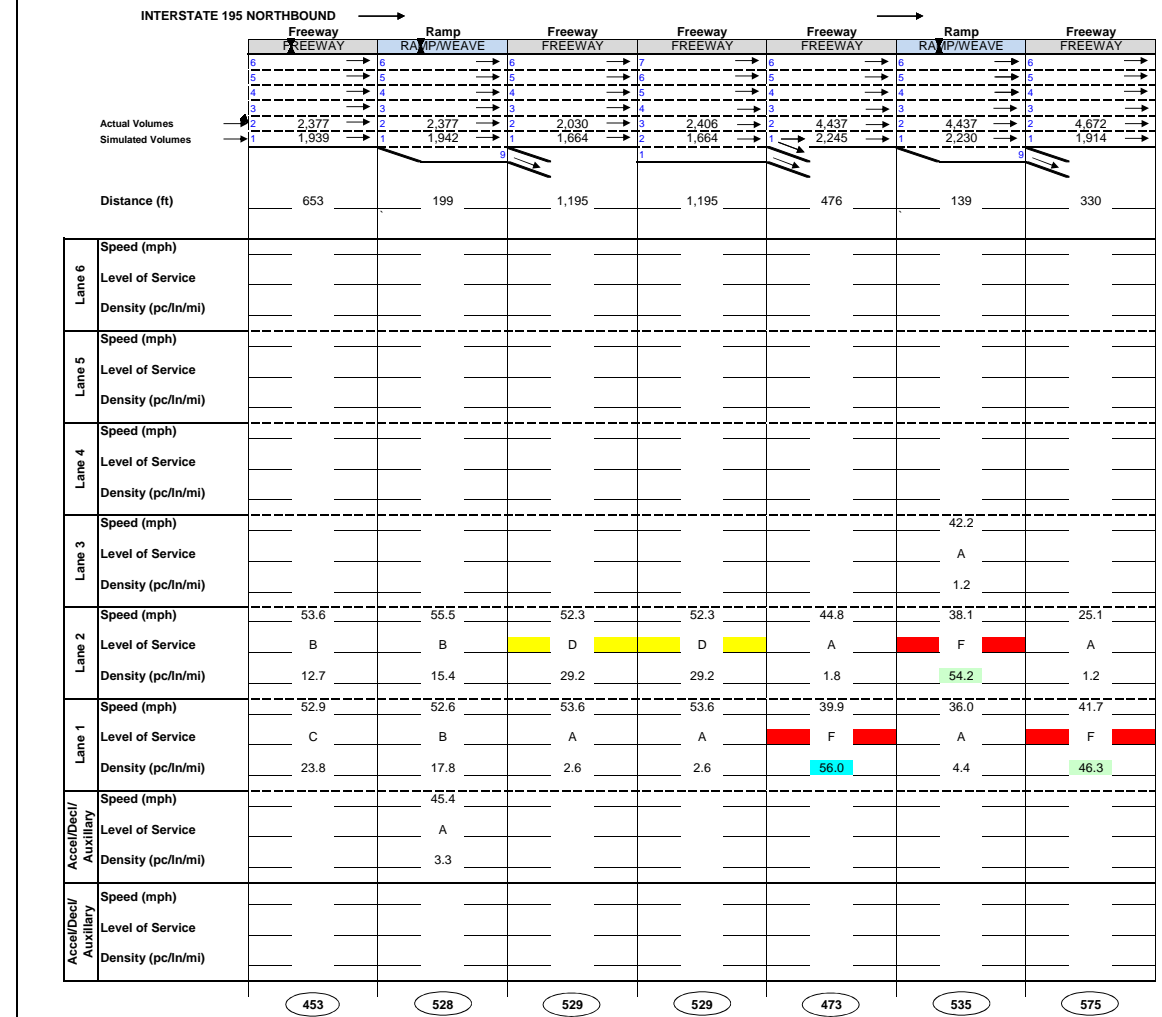
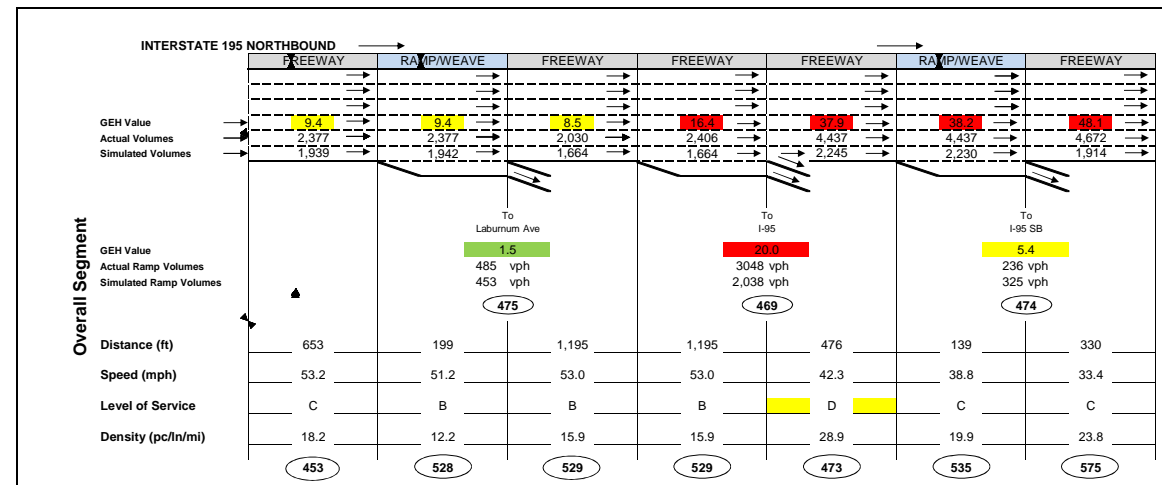
Figure SYIP 3
I-64 and I-95 Overlap Report
Eastbound I-64
AM 2035 Option 1 Peak Hour MOE's
7:30 - 8:30 AM



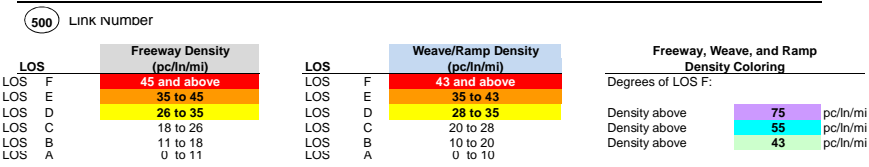
LEGEND

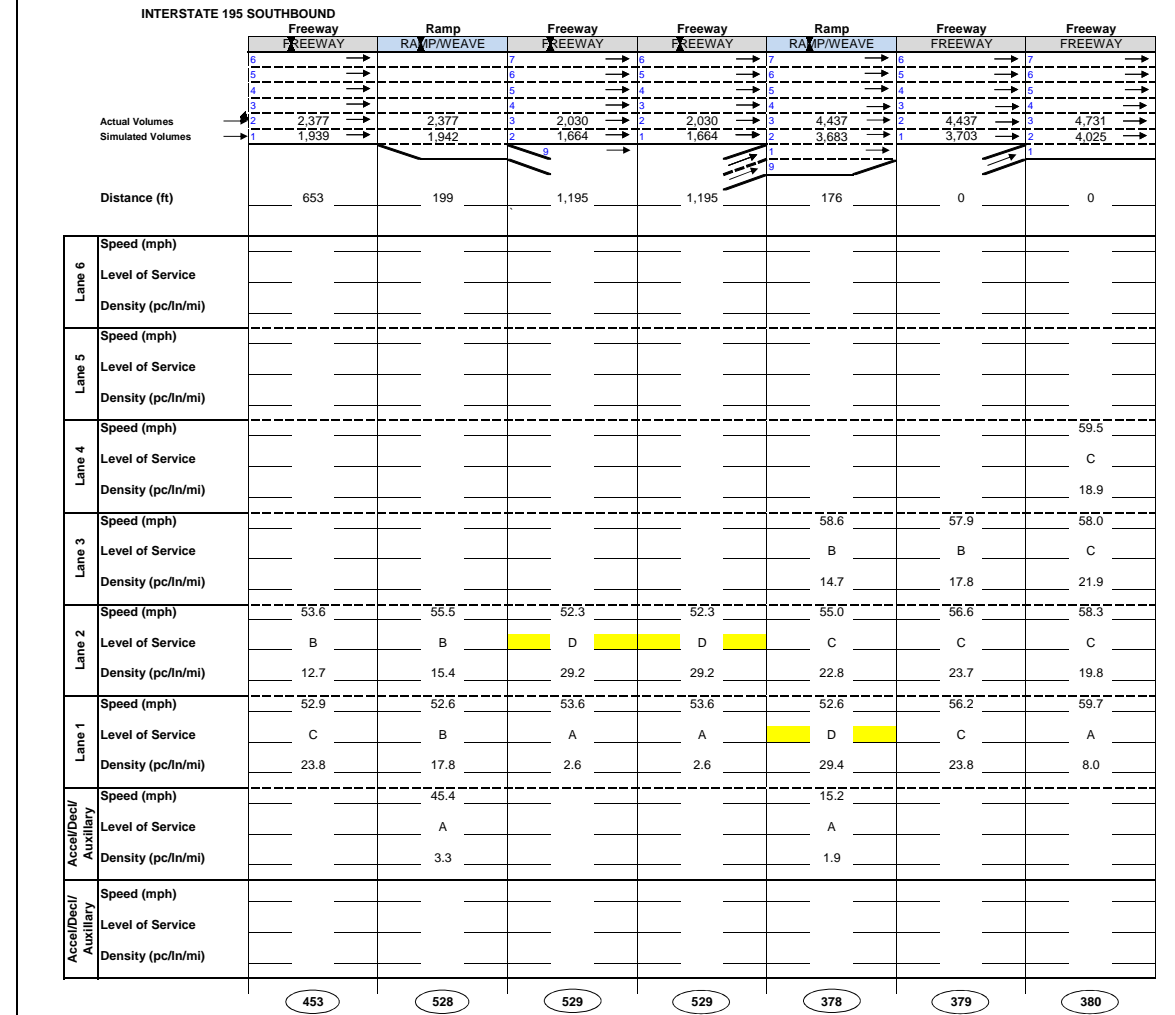
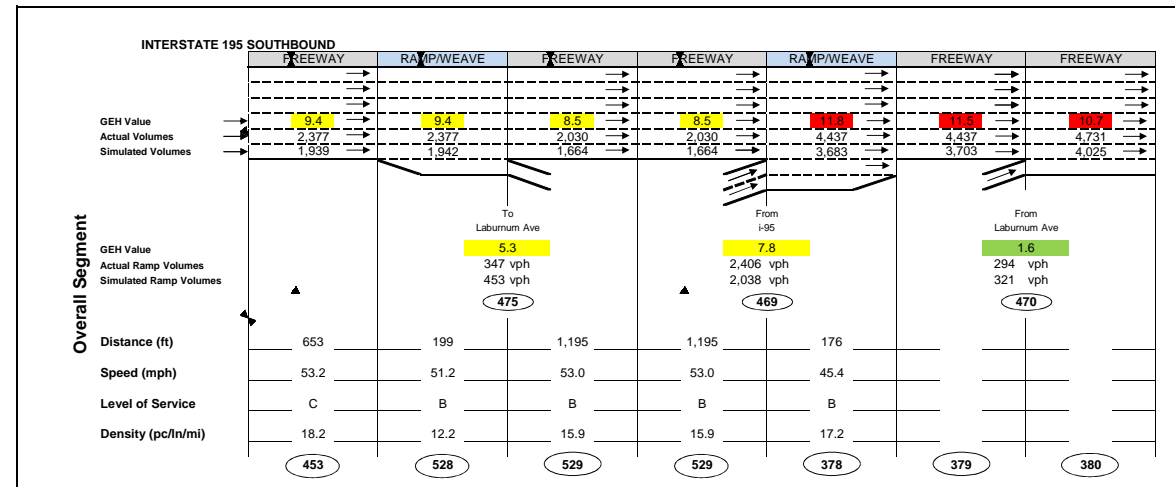
(500) Link Number

LOS	Freeway Density (pc/n/mi)	LOS	Weave/Ramp Density (pc/n/mi)	Freeway, Weave, and Ramp Density Coloring
LOS F	45 and above	LOS F	43 and above	Degrees of LOS F:
LOS E	35 to 45	LOS E	35 to 43	Density above 75 pc/n/mi
LOS D	26 to 35	LOS D	28 to 35	Density above 55 pc/n/mi
LOS C	18 to 26	LOS C	20 to 28	Density above 43 pc/n/mi
LOS B	11 to 18	LOS B	10 to 20	
LOS A	0 to 11	LOS A	0 to 10	

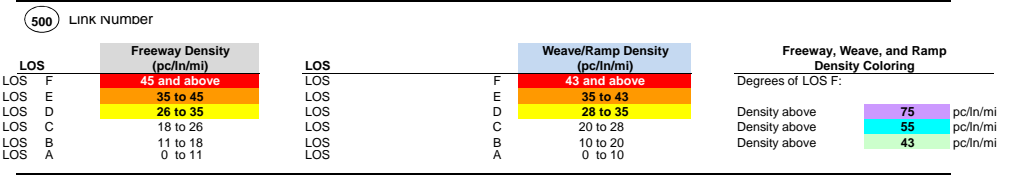


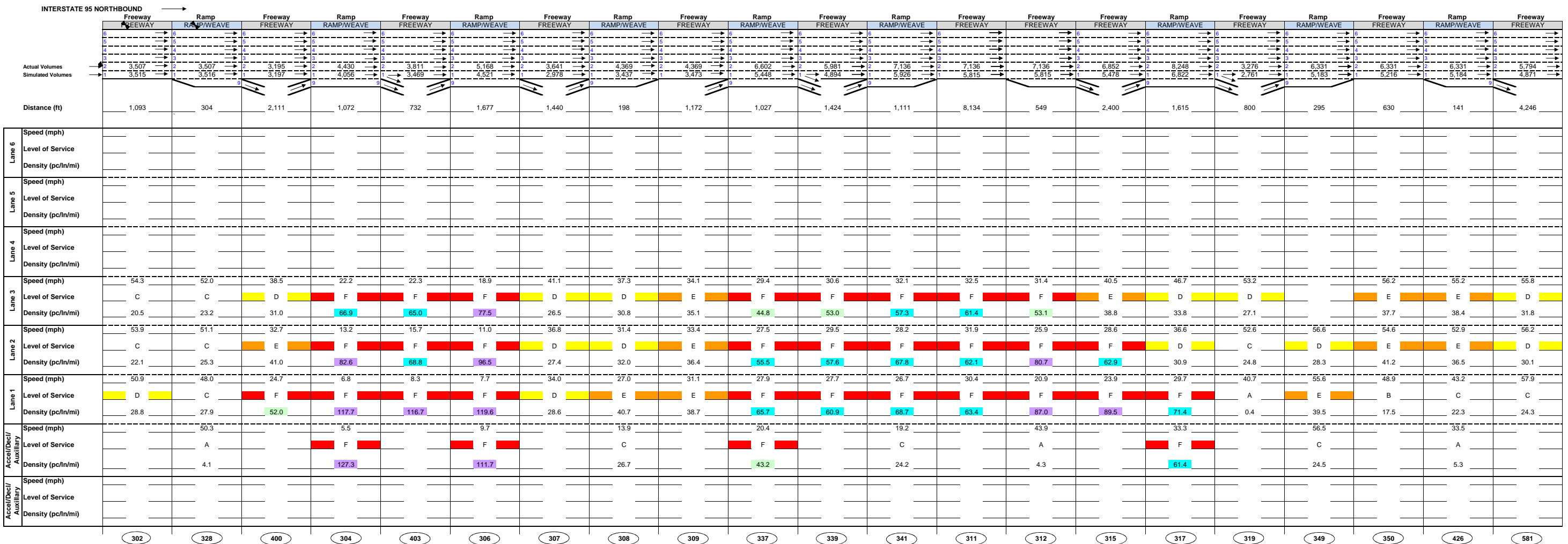
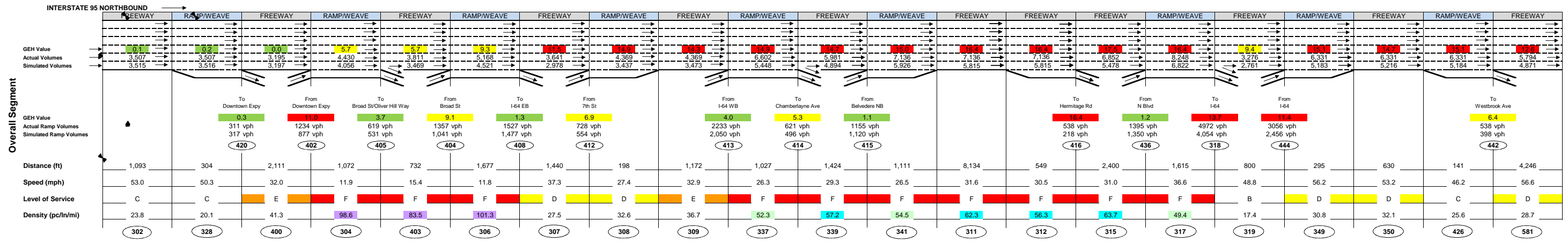
LEGEND





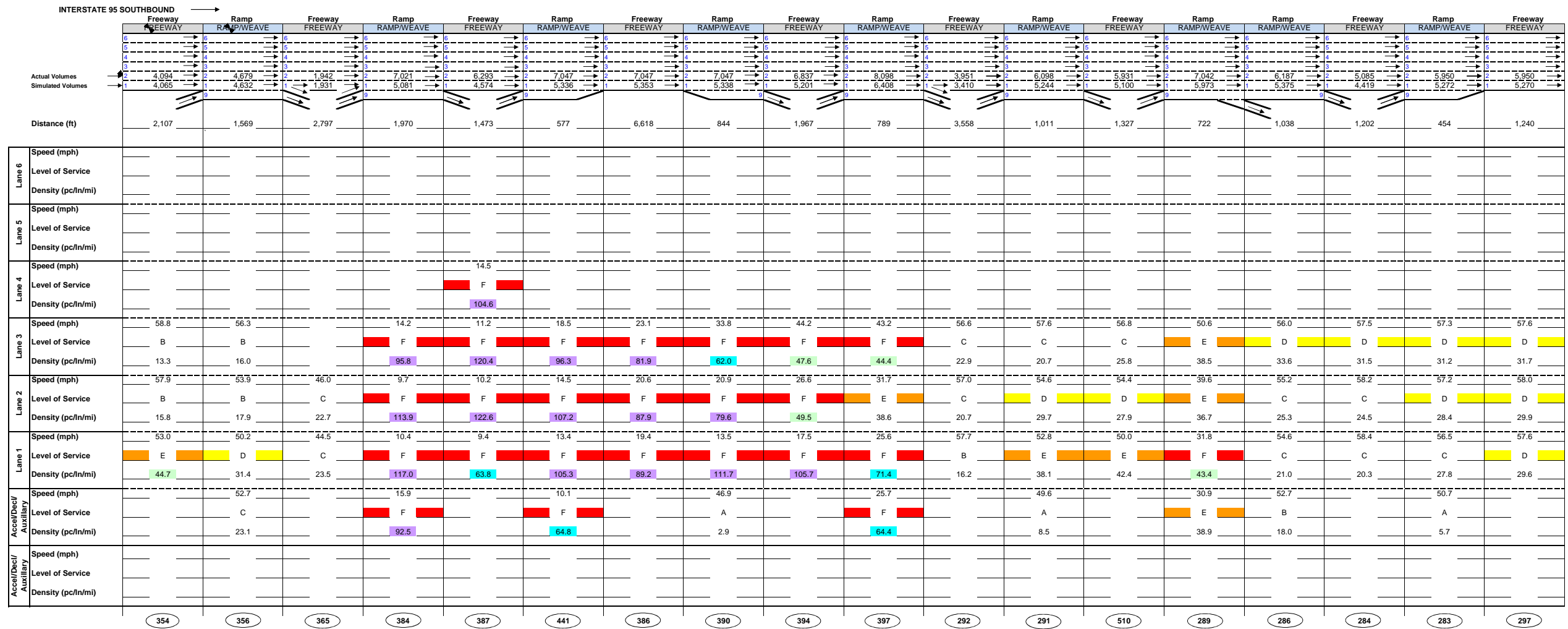
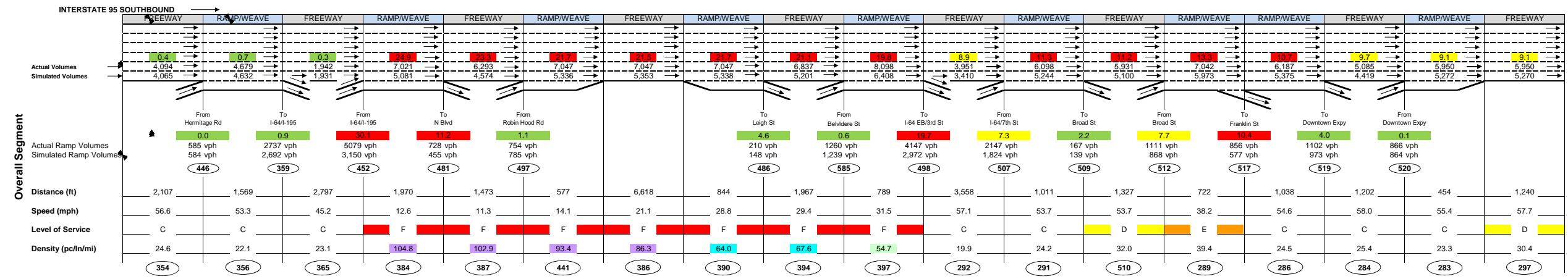
LEGEND





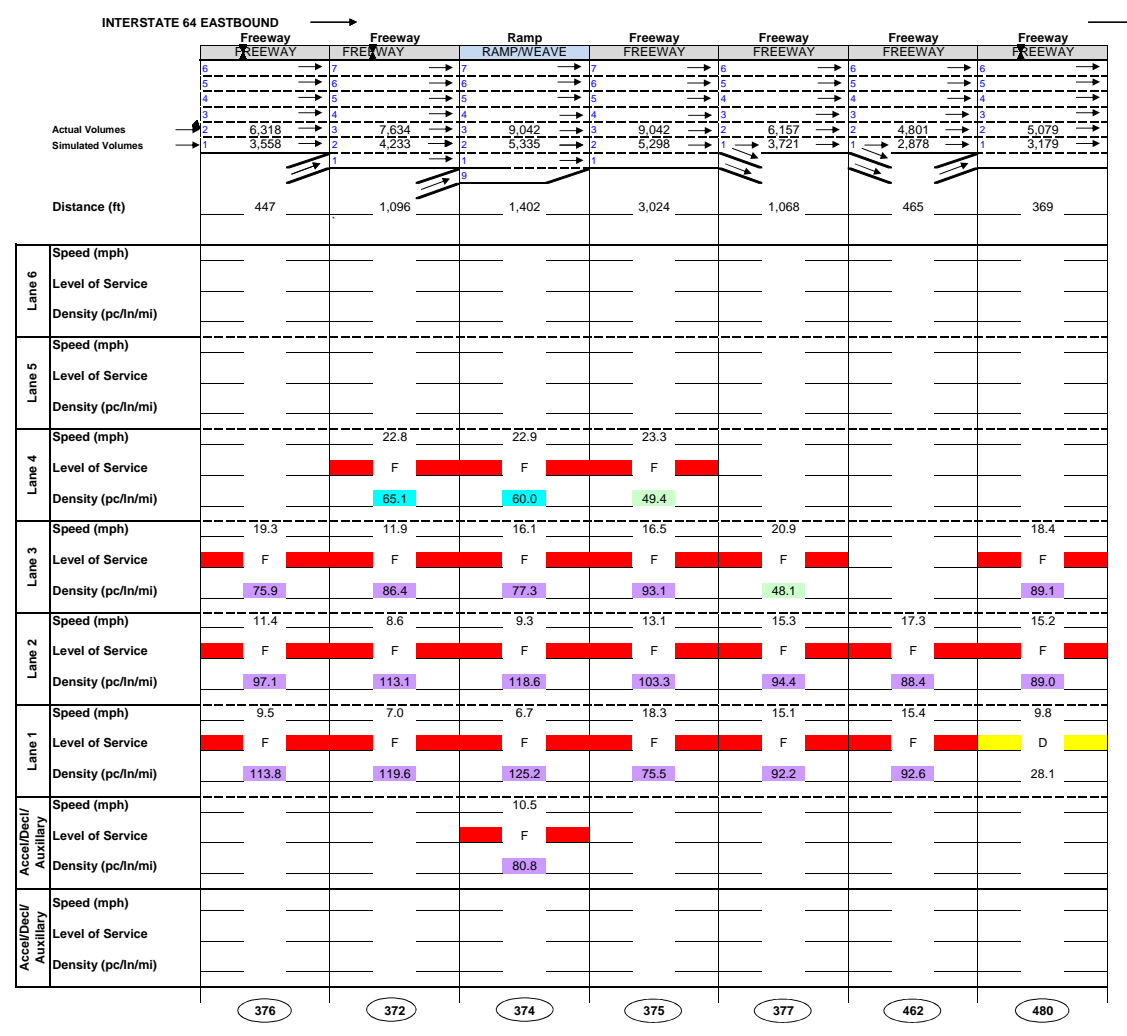
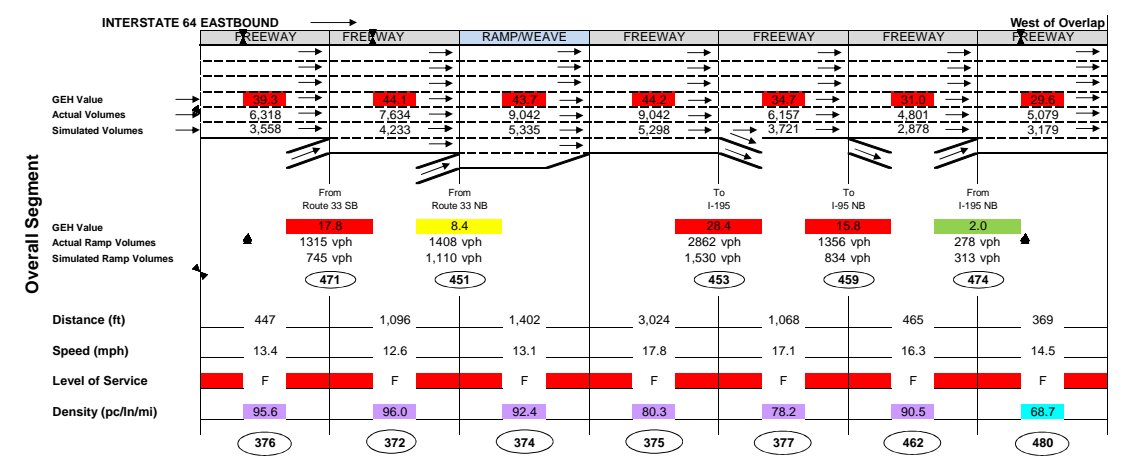
LEGEND

500	Link Number			
LOS F	Freeway Density (pc/ln/mi) 45 and above	LOS E	Weave/Ramp Density (pc/ln/mi) 43 and above	Density above 75 pc/ln/mi
LOS E	35 to 45	LOS F	35 to 43	Density above 55 pc/ln/mi
LOS D	26 to 35	LOS D	28 to 35	Density above 43 pc/ln/mi
LOS C	18 to 26	LOS C	20 to 28	
LOS B	11 to 18	LOS B	10 to 20	
LOS A	0 to 11	LOS A	0 to 10	



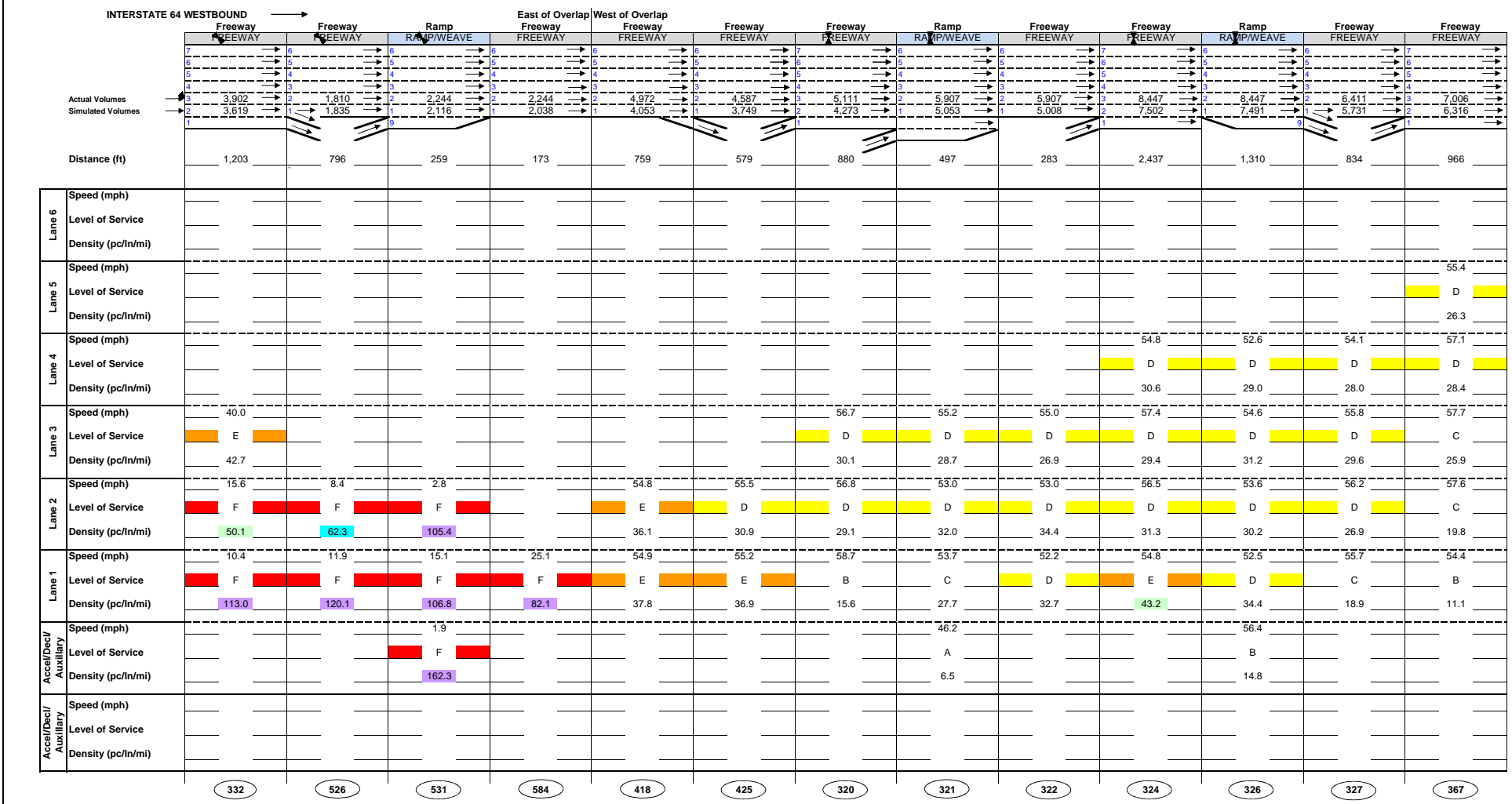
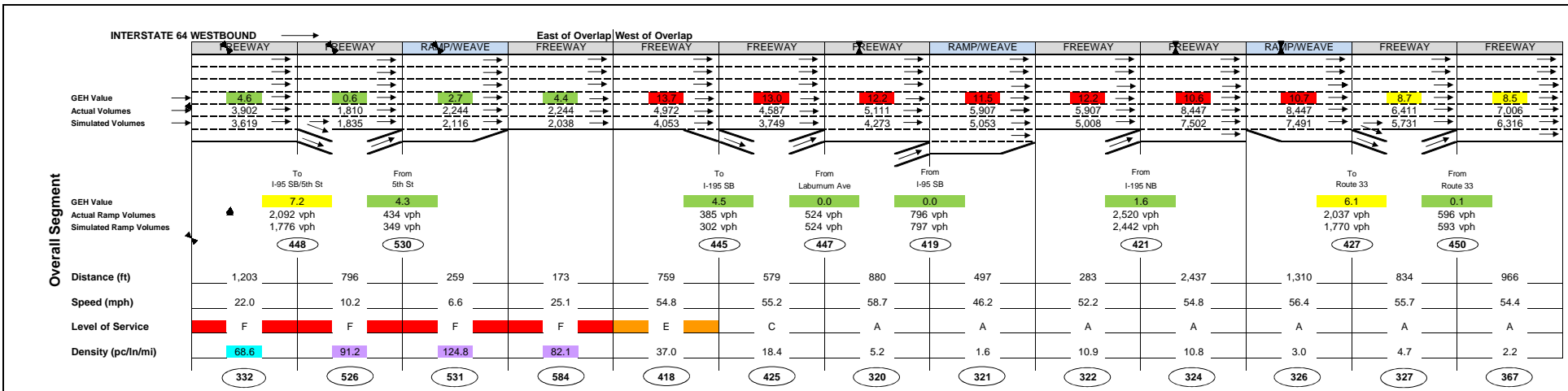
LEGEND

500	Link Number			
LOS F	Freeway Density (pc/in/mi) 45 and above	LOS F	Weave/Ramp Density (pc/in/mi) 43 and above	Freeway, Weave, and Ramp Density Coloring
LOS E	35 to 45	LOS E	35 to 43	
LOS D	26 to 35	LOS D	28 to 35	Degrees of LOS F:
LOS C	18 to 26	LOS C	20 to 28	Density above 75 pc/in/mi
LOS B	11 to 18	LOS B	10 to 20	Density above 55 pc/in/mi
LOS A	0 to 11	LOS A	0 to 10	Density above 43 pc/in/mi



LEGEND

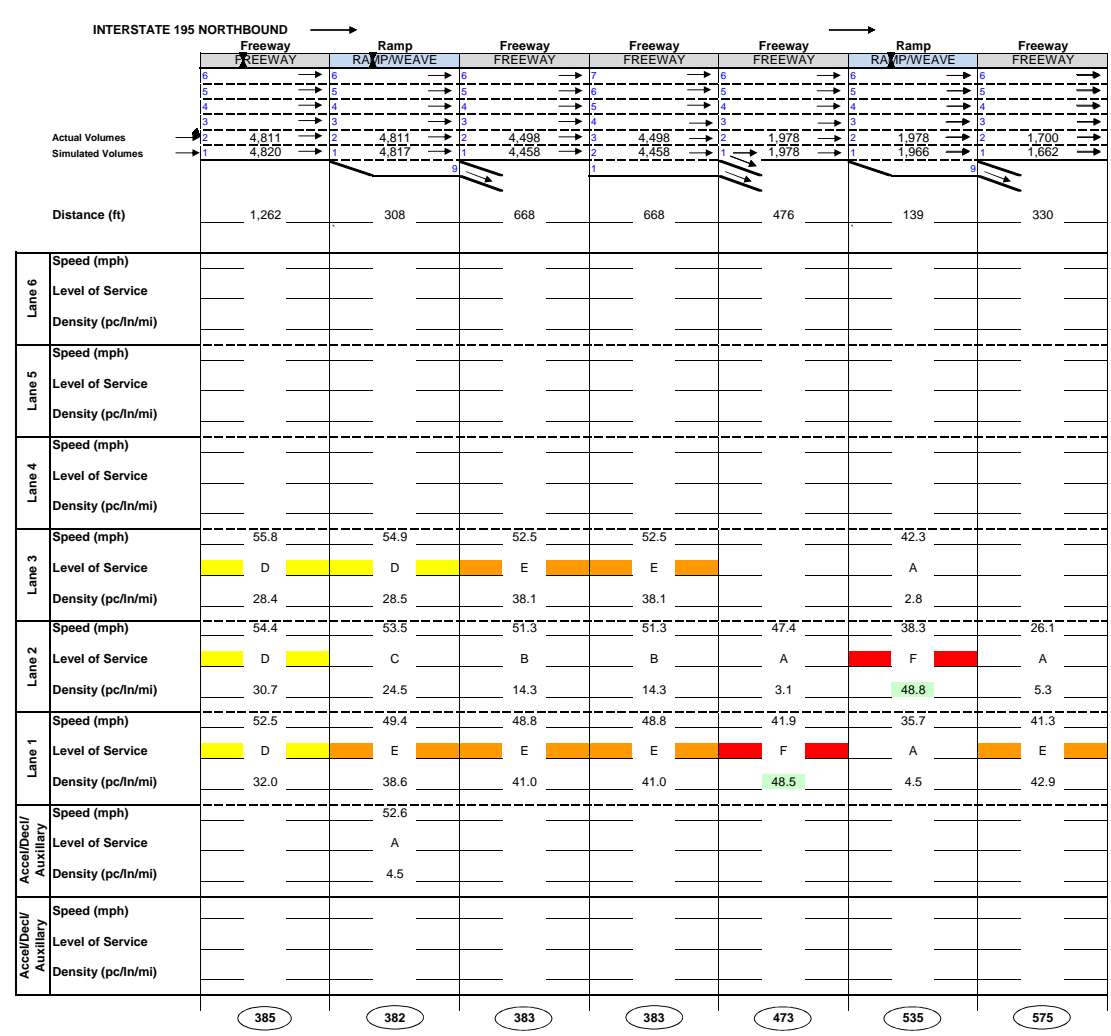
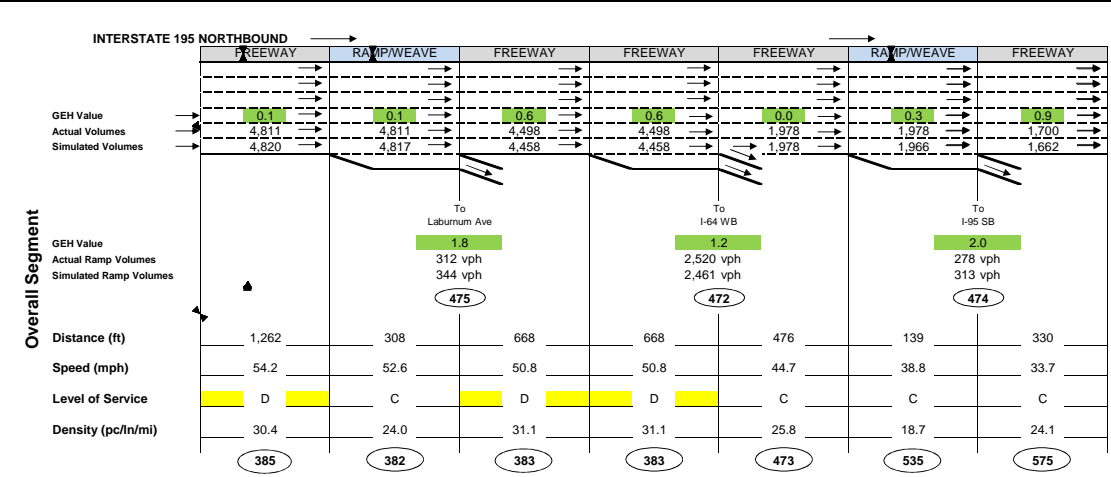
500 Link Number	Freeway Density (pc/In/mi)	Weave/Ramp Density (pc/In/mi)	Freeway, Weave, and Ramp Density Coloring
LOS F	45 and above	43 and above	Density above 75 pc/In/mi
LOS E	35 to 45	35 to 43	Density above 55 pc/In/mi
LOS D	26 to 35	28 to 35	Density above 43 pc/In/mi
LOS C	18 to 26	20 to 28	
LOS B	11 to 18	10 to 20	
LOS A	0 to 11	0 to 10	



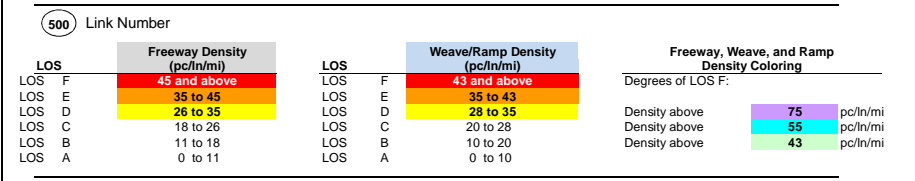
LEGEND

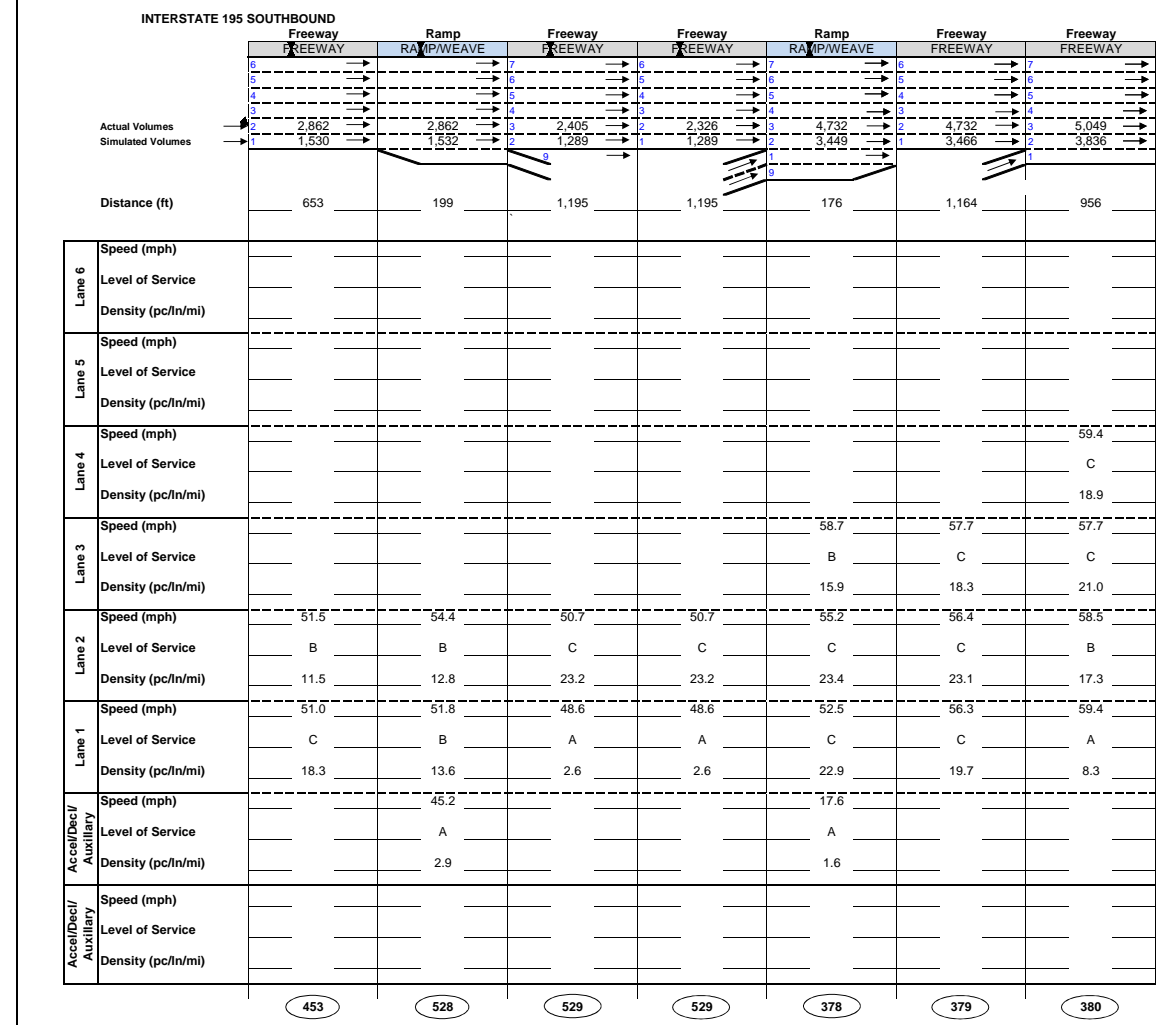
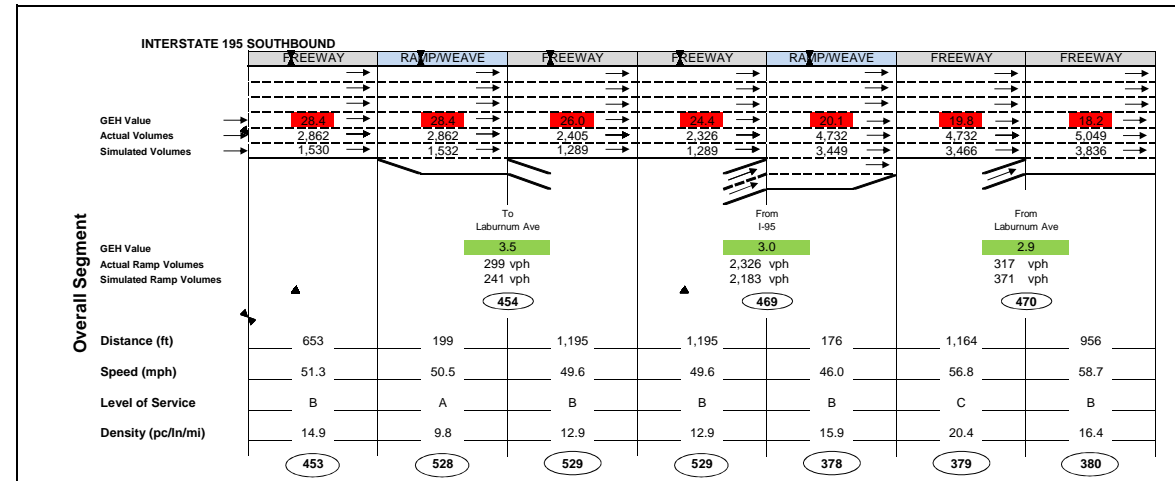
500 Link Number

LOS	Freeway Density (pc/n/mi)	LOS	Weave/Ramp Density (pc/n/mi)	Freeway, Weave, and Ramp Density Coloring
LOS F	45 and above	LOS F	43 and above	Degrees of LOS F:
LOS E	35 to 45	LOS E	35 to 43	Density above 75 pc/n/mi
LOS D	26 to 35	LOS D	28 to 35	Density above 55 pc/n/mi
LOS C	18 to 26	LOS C	20 to 28	Density above 43 pc/n/mi
LOS B	11 to 18	LOS B	10 to 20	
LOS A	0 to 11	LOS A	0 to 10	



LEGEND





LEGEND

500	Link Number
Freeway Density (pc/ln/mi)	Weave/Ramp Density (pc/ln/mi)
LOS F: 45 and above	LOS F: 43 and above
LOS E: 35 to 45	LOS E: 35 to 43
LOS D: 26 to 35	LOS D: 28 to 35
LOS C: 18 to 26	LOS C: 20 to 28
LOS B: 11 to 18	LOS B: 10 to 20
LOS A: 0 to 11	LOS A: 0 to 10
Freeway, Weave, and Ramp Density Coloring	Degrees of LOS F:
Density above 75 pc/ln/mi	Density above 75 pc/ln/mi
Density above 55 pc/ln/mi	Density above 55 pc/ln/mi
Density above 43 pc/ln/mi	Density above 43 pc/ln/mi



Kimley-Horn and Associates, Inc.

Figure SYIP 12
I-64 and I-95 Overlap Report
Southbound I-195
PM 2035 Option 1 Peak Hour MOE's
4:30 - 5:30 PM

I-95/I-64 Overlap Study
 2035 Build Option 1 Peak Hour Intersection Analyses Results

Table 1: Overall Intersection Results (730-830 AM)

North/South Street	East/West Street	Sig	Delay (sec)	LOS	Stopped Delay (sec)	Avg # of Stops	# Vehicles
Laburnum	I-64 EB offramp		5.6	A	0.6	0.1	654
Laburnum	I-195 NB offramp		1.1	A	0.0	0.0	1084
Laburnum	I-64 WB onramp		1.4	A	0.1	0.0	1952
N Boulevard	I-95 ramps	X	8.2	A	2.4	0.2	2288
Hermitage	Robin Hood	X	23.4	C	14.8	0.8	1800
Robin Hood	I-95 SB onramp		1.4	A	0.1	0.0	752
Leigh	Gilmer	X	24.4	C	17.7	0.5	1274
Chamberlayne	I-95 NB offramp		1.6	A	0.0	0.0	1150
3rd St	Jackson St	X	15.9	B	8.7	0.5	1385
4th St	Jackson St	X	7.7	A	4.7	0.4	778
5th St	Jackson St	X	18.0	B	12.7	0.6	1288
Broad St	College	X	8.0	A	4.7	0.4	2673
Broad St	14th St	X	8.9	A	4.0	0.3	3334
15th St	Franklin/Bank St	X	18.2	B	9.1	0.7	1240
15th St	Main St	X	18.8	B	11.8	0.7	2003
14th St	Main St	X	13.4	B	8.6	0.4	2703
14th St	Franklin St	X	15.9	B	9.8	0.6	1793
Broad St	17th St	X	31.4	C	10.1	0.7	2837
Broad St	18th St	X	25.7	C	16.5	0.8	2183
Jackson St	7th St	X	13.1	B	8.6	0.5	1058
Jackson St	8th St	X	14.8	B	10.1	0.6	871
7th St	Duval St	X	10.9	B	5.9	0.6	990
Belvedere	Leigh	X	24.8	C	17.4	0.7	3227
N Boulevard	Robin Hood	X	24.9	C	17.6	0.7	2770
Hermitage	I-95 NB offramp	X	4.8	A	0.3	0.2	686

I-95/I-64 Overlap Study
2035 Build Option 1 Peak Hour Intersection Analyses Results

Table 1: Overall Intersection Results (430-530 PM)

North/South Street	East/West Street	Sig	Delay (sec)	LOS	Stopped Delay (sec)	Avg # of Stops	# Vehicles
Laburnum	I-64 EB offramp		6.1	A	1.0	0.2	663
Laburnum	I-195 NB offramp		0.5	A	0.0	0.0	986
Laburnum	I-64 WB onramp		1.0	A	0.0	0.0	2112
N Boulevard	I-95 ramps	X	20.6	C	5.9	0.5	2584
Hermitage	Robin Hood	X	26.3	C	17.2	0.8	2004
Robin Hood	I-95 SB onramp		5.1	A	1.6	0.1	1093
Leigh	Gilmer	X	38.8	D	28.9	0.8	1217
Chamberlayne	I-95 NB offramp		0.7	A	0.0	0.0	1540
3rd St	Jackson St	X	14.0	B	10.0	0.5	668
4th St	Jackson St	X	18.4	B	12.7	0.7	787
5th St	Jackson St	X	14.1	B	10.5	0.5	923
Broad St	College	X	42.5	D	28.9	1.1	2087
Broad St	14th St	X	61.6	E	27.1	1.9	2725
15th St	Franklin/Bank St	X	14.6	B	8.8	0.5	866
15th St	Main St	X	22.3	C	16.0	0.7	1836
14th St	Main St	X	17.4	B	12.3	0.6	2365
14th St	Franklin St	X	21.0	C	12.9	0.7	1370
Broad St	17th St	X	138.2	F	74.9	3.7	1987
Broad St	18th St	X	44.2	D	27.8	1.3	2079
Jackson St	7th St	X	51.9	D	30.7	1.4	2234
Jackson St	8th St	X	12.8	B	7.4	0.6	831
7th St	Duval St	X	34.9	C	20.1	1.1	2423
Belvedere	Leigh	X	37.4	D	23.9	0.9	4133
N Boulevard	Robin Hood	X	30.1	C	19.9	0.8	2998
Hermitage	I-95 NB offramp	X	1.7	A	0.2	0.1	548

