

Impacts to resources have been calculated based on illustrative planning level limits of disturbance, which represent a worst-case scenario based on preliminary design for each BUIA Alternative retained.

# Preferred Alternative

**VDOT**  
 Martinsville Southern Connector Study  
 Route 220 Environmental Impact Statement

Inventory Boundary	Historic Property
Planning Level Limits of Disturbance: Preferred Alternative	Stream
Parcel Boundary	Wetlands
	100 Year Floodplain

0 0.25 0.5 0.75 1 Miles

N  
▲

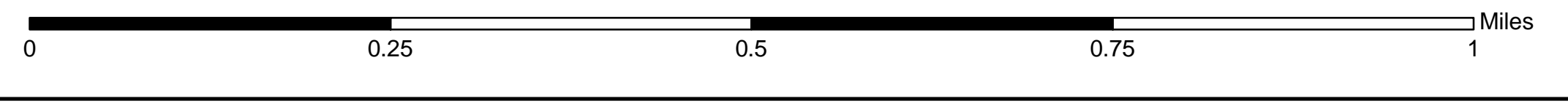
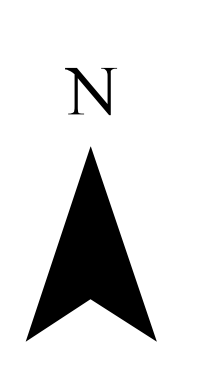


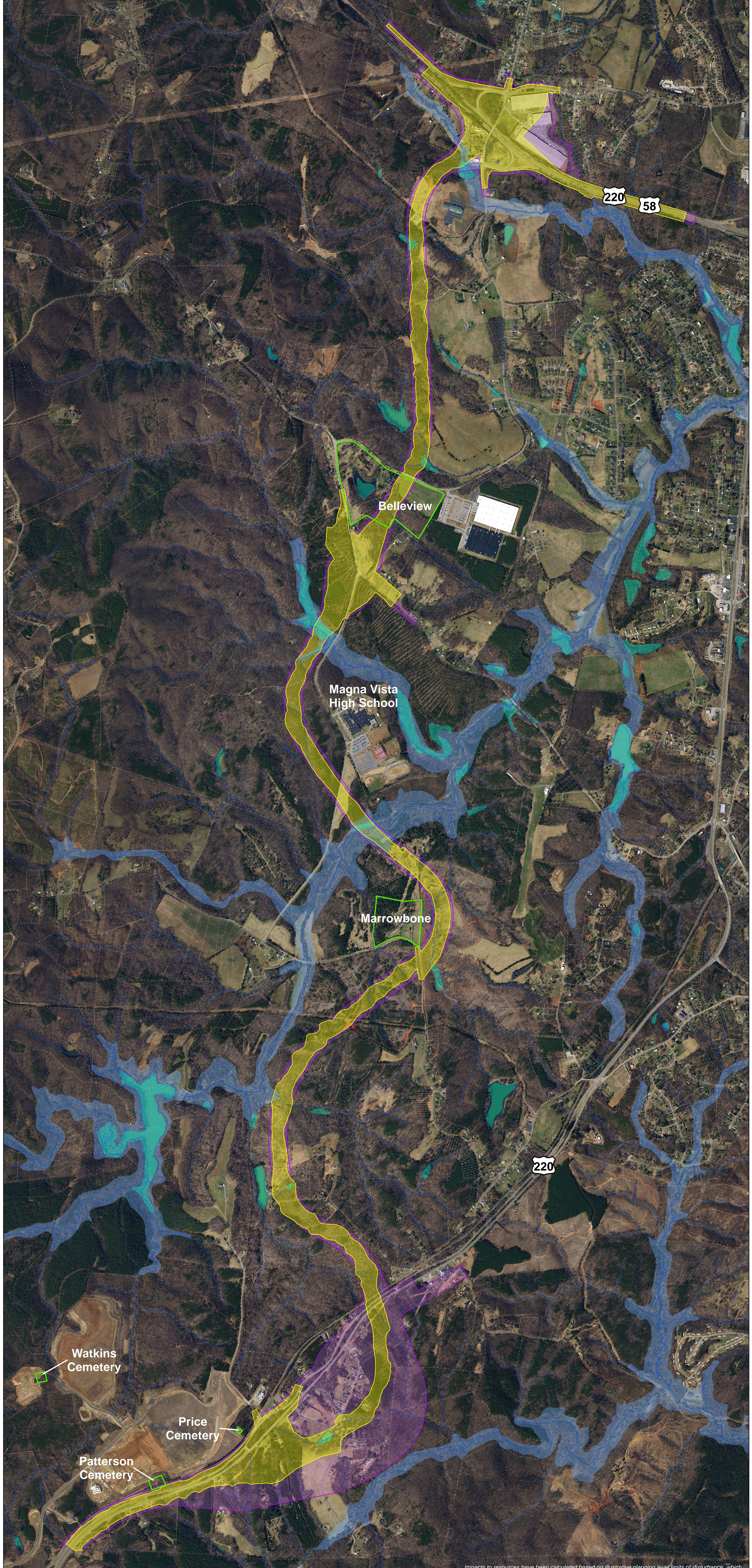
Impacts to resources have been calculated based on illustrative planning level limits of disturbance, which represent a worst-case scenario based on preliminary design for each Build Alternative retained.

# Alternative A

**VDOT**  
 Martinsville Southern Connector Study  
 Route 220 Environmental Impact Statement

- Inventory Boundary
- Historic Property
- Planning Level Limits of Disturbance: Alternative A
- Stream
- Wetlands
- Parcel Boundary
- 100 Year Floodplain





Impacts to resources have been calculated based on illustrative planning level limits of disturbance, which represent a worst-case scenario based on preliminary design for each BUIA Alternative retained.

# Alternative B

**VDOT**  
 Martinsville Southern Connector Study  
 Route 220 Environmental Impact Statement

- Inventory Boundary
- Historic Property
- Planning Level Limits of Disturbance: Alternative B
- Stream
- Wetlands
- Parcel Boundary
- 100 Year Floodplain

