

**Project Location**

Roanoke County / City of Salem

**North Arrow & Scale**

**Legend**

- Proposed Full Depth Pavement
- Proposed Planing and Resurfacing/Build-Up
- Demolition of Pavement
- Low Maintenance Median Treatment
- Proposed Limits of Construction - Cut
- Proposed Limits of Construction - Fill
- Potential Location of Stormwater Facility
- Existing Right of Way
- Existing Easements
- Proposed Right of Way
- Proposed Permanent Drainage Easement
- Proposed Temporary Construction Easement
- Property Line
- Proposed Concrete Median Barrier
- Proposed Curbing
- Proposed Guardrail
- Potential Noise Barrier Adjusted for Terrain/Topography
- Proposed Retaining Wall

**REFERENCES**  
(PROFILES, DETAIL & DRAINAGE DESCRIPTION SHEETS, ETC.)

Utility Owners IF(2)  
Construction Alignment Data IG(1) - IG(9)  
Profile Rolls 14A - 14B

**RFP PLANS**  
For Information Only  
ADDENDUM #3  
DATE: 1/26/21

**Contact Information**

Craig Moore, PE  
Project Manager / Assistant District L&D Engineer  
Virginia Department of Transportation  
731 Harrison Avenue  
Salem, VA 24153

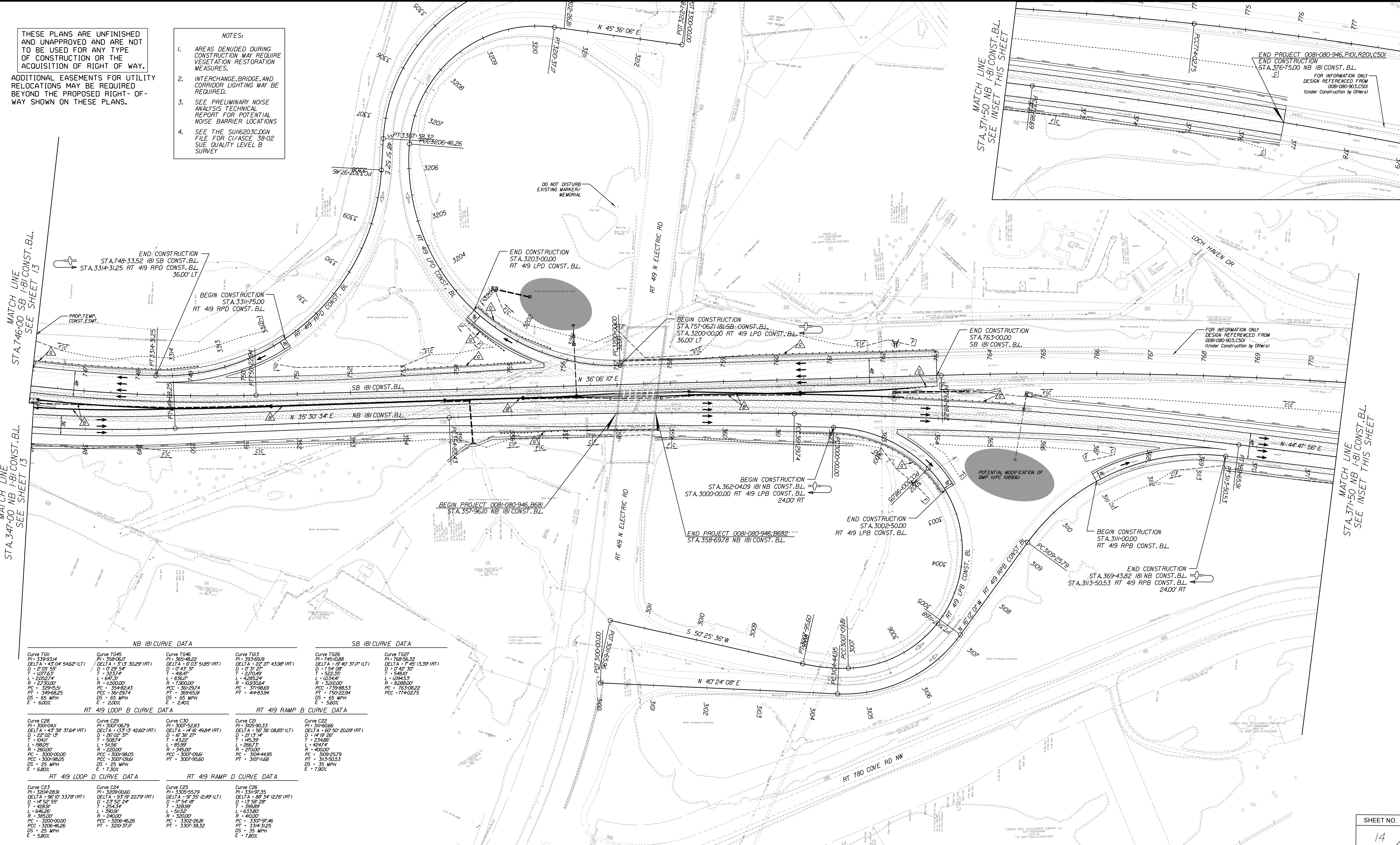
Comments may also be sent to:  
I81-MM138-141@vdot.virginia.gov

I-81 Widening MM 136.6 to 141.8  
Roanoke County / City of Salem, Virginia  
0081-080-946, P101, R201, C501  
UPC 116203  
Federal Project Number

THESE PLANS ARE UNFINISHED AND UNAPPROVED AND ARE NOT TO BE USED FOR ANY TYPE OF CONSTRUCTION OR THE ACQUISITION OF RIGHT OF WAY.

ADDITIONAL EASEMENTS FOR UTILITY RELOCATIONS MAY BE REQUIRED BEYOND THE PROPOSED RIGHT-OF-WAY SHOWN ON THESE PLANS.

- NOTES:**
- AREAS DENuded DURING CONSTRUCTION MAY REQUIRE VEGETATION RESTORATION MEASURES.
  - INTERCHANGE, BRIDGE, AND CORRIDOR LIGHTING MAY BE REQUIRED.
  - SEE PRELIMINARY NOISE ANALYSIS TECHNICAL REPORT FOR POTENTIAL NOISE BARRIER LOCATIONS.
  - SEE THE SUI16203C.DGN FILE FOR CIVASCE 38-02 SUE QUALITY LEVEL B SURVEY.



MATCH LINE STA. 746+00 SB I-81 CONST. B.L. SEE SHEET 13

MATCH LINE STA. 347+00 NB I-81 CONST. B.L. SEE SHEET 13

MATCH LINE STA. 371+50 NB I-81 CONST. B.L. SEE INSET THIS SHEET

MATCH LINE STA. 371+50 NB I-81 CONST. B.L. SEE INSET THIS SHEET

MATCH LINE STA. 371+50 NB I-81 CONST. B.L. SEE INSET THIS SHEET

NB I-81 CURVE DATA		SB I-81 CURVE DATA	
Curve T01 PI = 339+93.14 DELTA = 43° 04' 54.82" (LT) D = 2109.55' T = 1077.63' L = 2125.27' R = 2130.00' PC = 329+65.91 PT = 349+68.25 DS = 65 MPH E = 6.00%	Curve T045 PI = 338+06.07 DELTA = 3° 13' 30.29" (RT) D = 1729.54' T = 323.74' L = 647.31' R = 1150.00' PC = 354+82.43 PT = 369+29.74 DS = 65 MPH E = 2.00%	Curve T046 PI = 365+48.22 DELTA = 6° 03' 51.85" (RT) D = 1741.39' T = 418.47' L = 836.71' R = 1300.00' PC = 369+29.74 PT = 389+25.91 DS = 65 MPH E = 2.40%	Curve T03 PI = 333+69.19 DELTA = 22° 27' 43.98" (RT) D = 1741.39' T = 2170.49' L = 4285.24' R = 1300.00' PC = 379+88.53 PT = 379+88.53 DS = 65 MPH E = 5.60%
RT 419 LOOP B CURVE DATA		RT 419 RAMP B CURVE DATA	
Curve C28 PI = 300+04.11 DELTA = 43° 38' 37.64" (RT) D = 2202.13' T = 1041.71' L = 1980.05' R = 2800.00' PC = 300+00.00 PT = 300+38.05 DS = 25 MPH E = 6.80%	Curve C29 PI = 300+06.79 DELTA = 133° 13' 42.60" (RT) D = 2602.37' T = 598.74' L = 511.56' R = 3450.00' PC = 300+98.05 PT = 300+09.61 DS = 25 MPH E = 7.30%	Curve C30 PI = 300+52.83 DELTA = 14° 16' 49.84" (RT) D = 1636.27' T = 423.82' L = 85.59' R = 3450.00' PC = 300+95.61 PT = 300+95.60 DS = 25 MPH E = 7.30%	Curve C26 PI = 305+90.33 DELTA = 56° 36' 08.85" (LT) D = 2713.14' T = 1463.32' L = 2667.3' R = 2700.00' PC = 304+44.95 PT = 307+11.68 DS = 35 MPH E = 7.90%
RT 419 LOOP D CURVE DATA		RT 419 RAMP D CURVE DATA	
Curve C23 PI = 3204+28.91 DELTA = 96° 10' 33.78" (RT) D = 1452.55' T = 428.91' L = 646.26' R = 385.00' PC = 3200+00.00 PT = 3206+46.26 DS = 25 MPH E = 5.80%	Curve C24 PI = 3209+00.60 DELTA = 93° 19' 22.79" (RT) D = 2302.24' T = 541.54' L = 390.00' R = 2400.00' PC = 3200+00.00 PT = 3207+37.11 DS = 25 MPH E = 5.80%	Curve C25 PI = 3305+55.79 DELTA = 97° 35' 12.49" (LT) D = 1754.18' T = 328.99' L = 613.80' R = 3200.00' PC = 3307+46.46 PT = 3307+38.32 DS = 35 MPH E = 7.90%	Curve C26 PI = 3311+91.35 DELTA = 88° 54' 12.76" (RT) D = 1358.28' T = 599.89' L = 234.86' R = 4000.00' PC = 3307+46.46 PT = 3314+31.25 DS = 35 MPH E = 7.90%

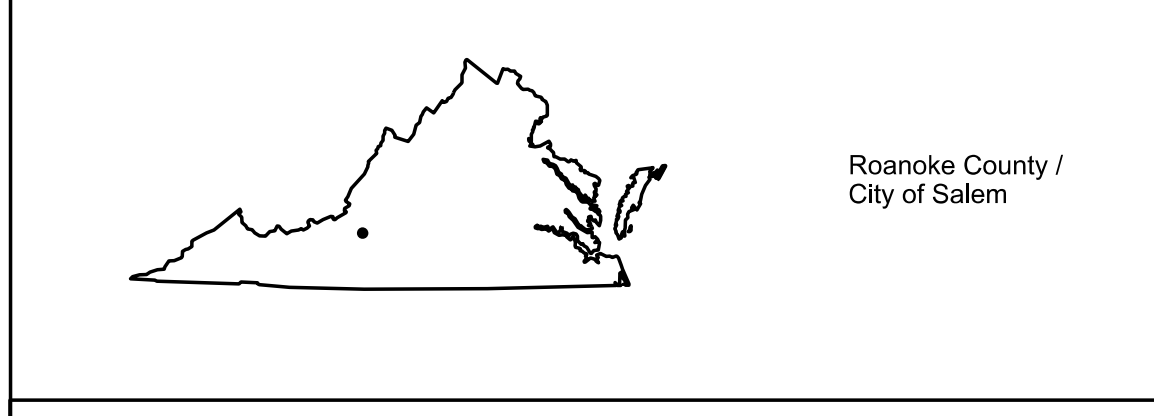
END PROJECT 0081-080-946, P101, R201, C501  
END CONSTRUCTION STA. 376+75.00 NB I-81 CONST. B.L.  
FOR INFORMATION ONLY DESIGN REFERENCED FROM 0081-080-903, C501 (Under Construction by Others)

FOR INFORMATION ONLY DESIGN REFERENCED FROM 0081-080-903, C501 (Under Construction by Others)

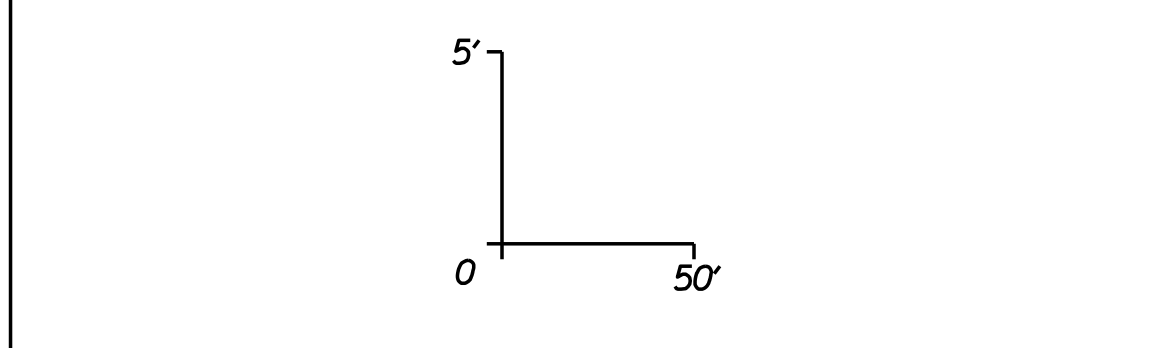
POTENTIAL MODIFICATION OF BMP (UPC 108906)

DO NOT DISTURB EXISTING MARKER MEMORIAL

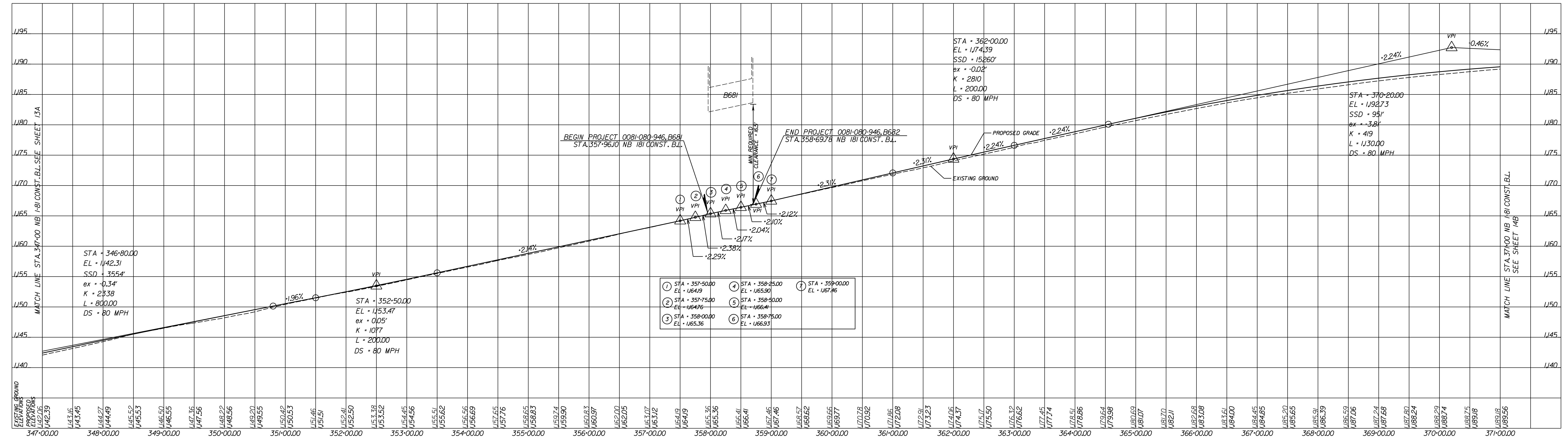
**Project Location**



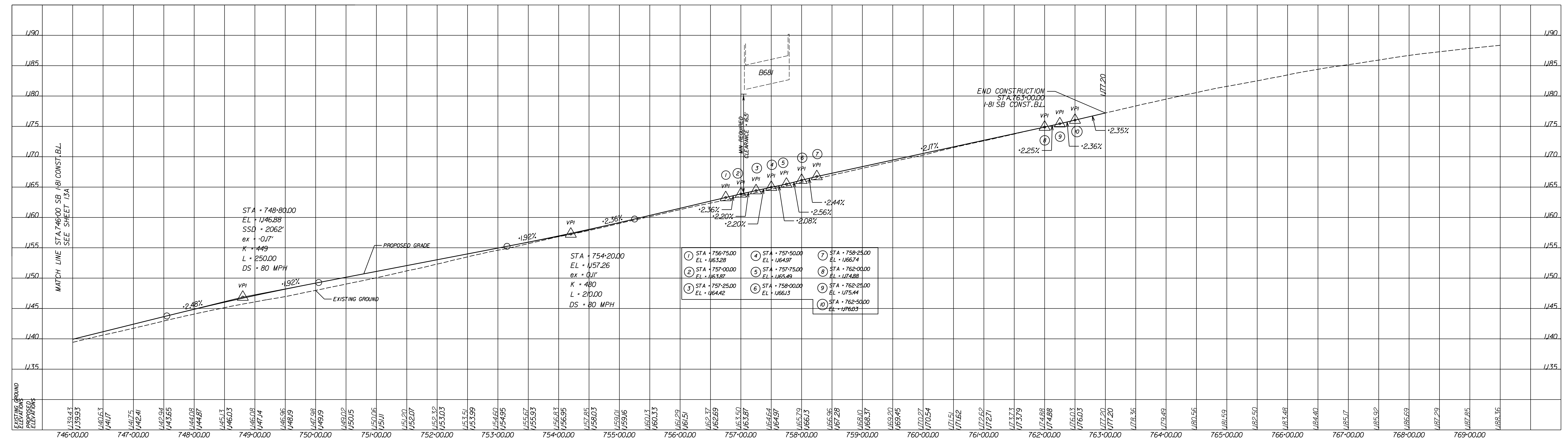
**Scale**



### I-81 NORTHBOUND



### I-81 SOUTHBOUND



RFP PLANS  
For Information Only  
DATE: 10/22/20

THESE PLANS ARE UNFINISHED AND UNAPPROVED AND ARE NOT TO BE USED FOR ANY TYPE OF CONSTRUCTION OR THE ACQUISITION OF RIGHT OF WAY.

ADDITIONAL EASEMENTS FOR UTILITY RELOCATIONS MAY BE REQUIRED BEYOND THE PROPOSED RIGHT-OF-WAY SHOWN ON THESE PLANS.

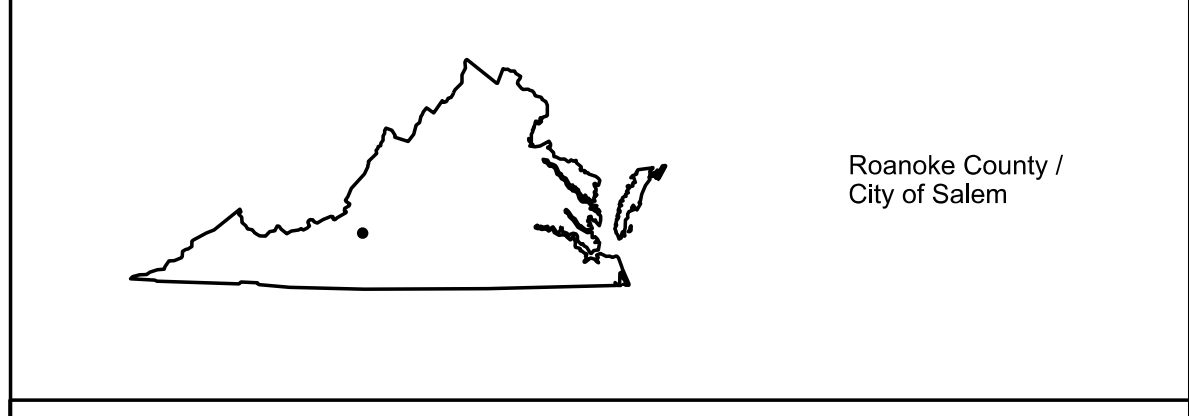
**Contact Information**

Craig Moore, PE  
Project Manager / Assistant District L&D Engineer  
Virginia Department of Transportation  
731 Harrison Avenue  
Salem, VA 24153

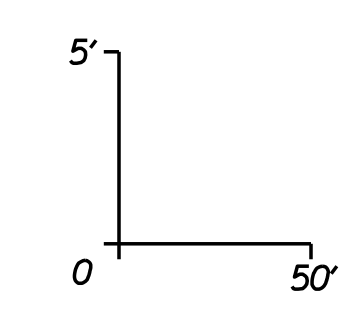
Comments may also be sent to:  
I81-MM138-141@vdot.virginia.gov

I-81 Widening MM 136.6 to 141.8  
Roanoke County / City of Salem, Virginia  
0081-080-946, P101, R201, C501  
UPC 116203  
Federal Project Number

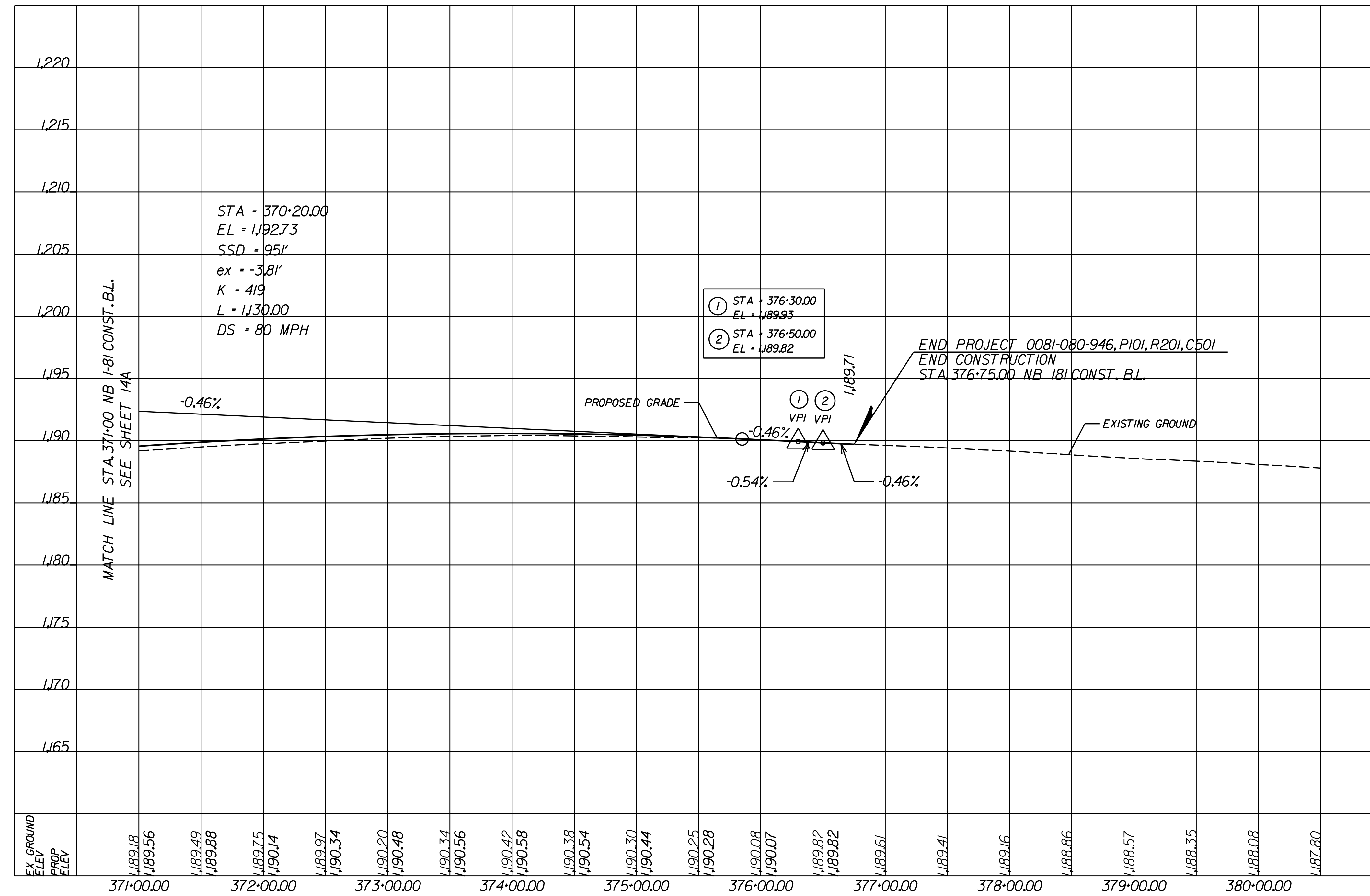
Project Location



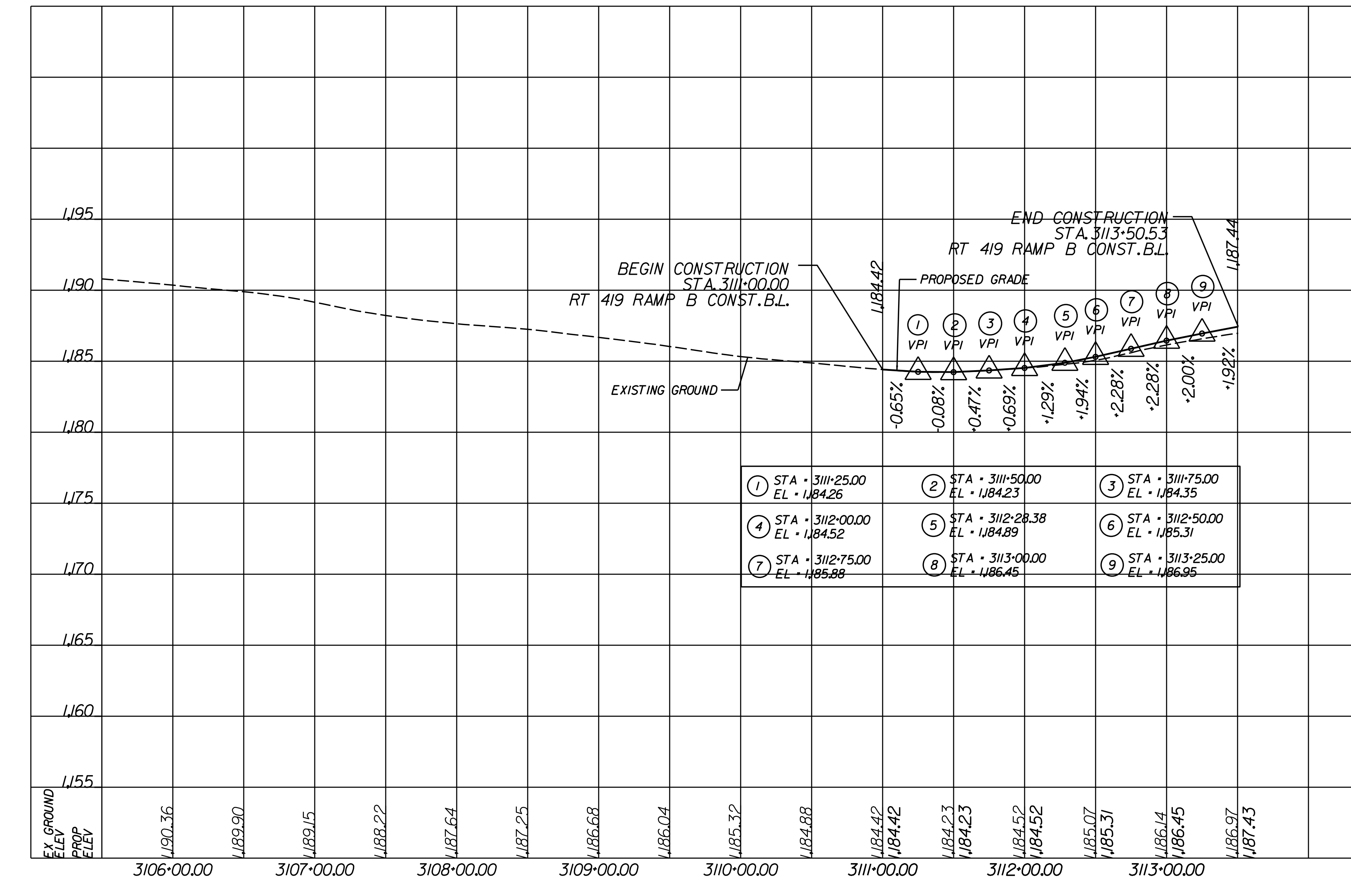
Scale



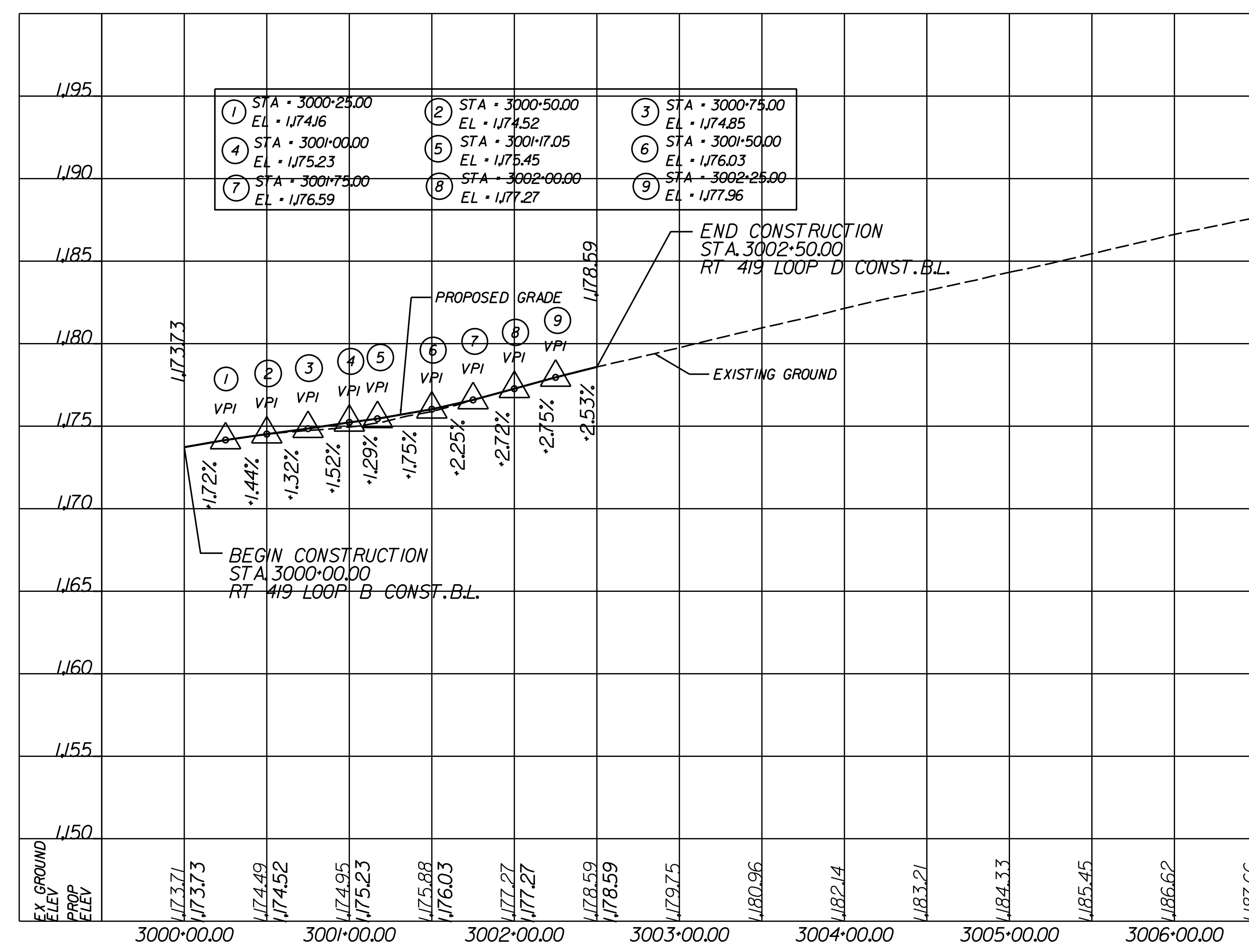
### I-81 NORTHBOUND



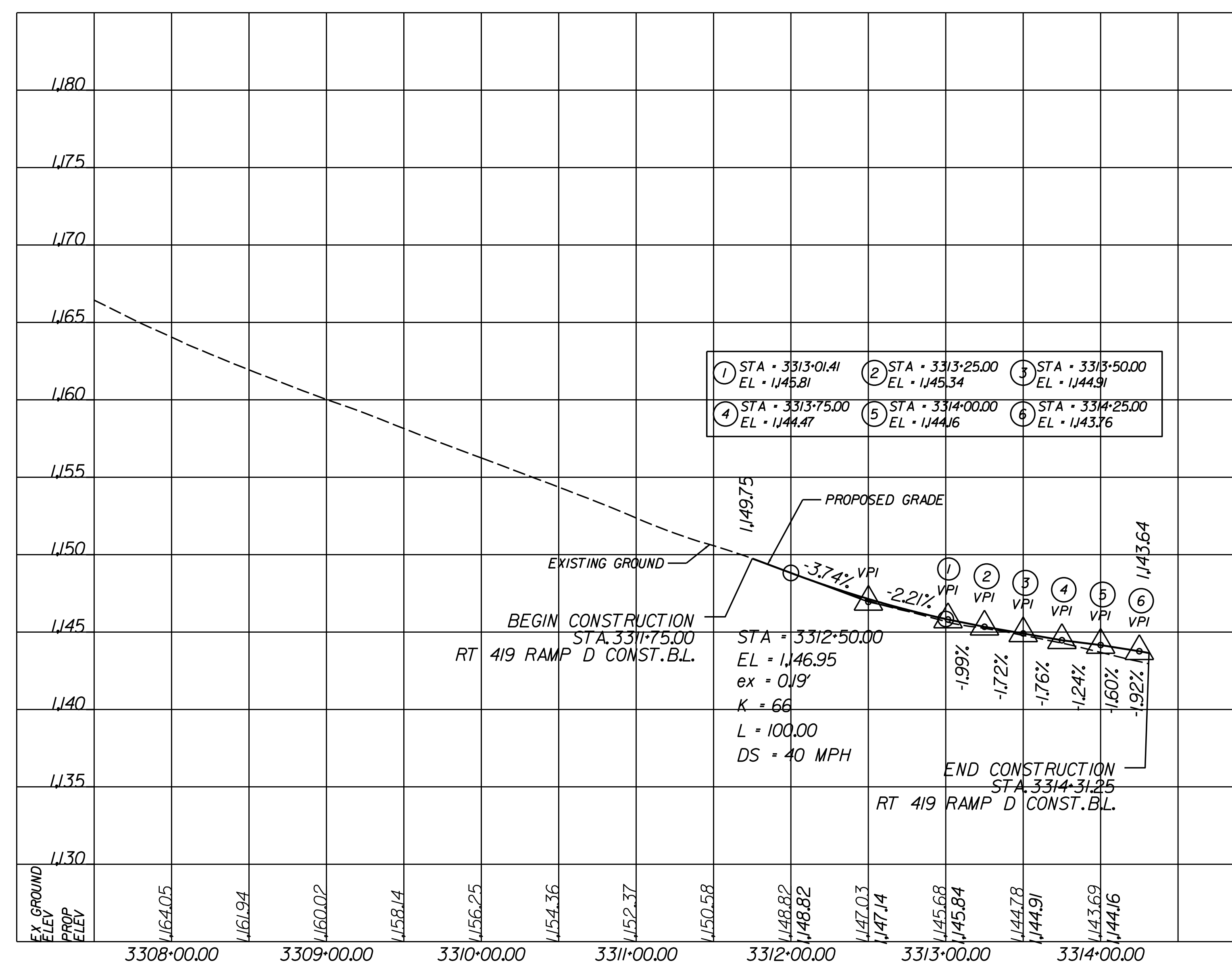
### RT. 419 RAMP B



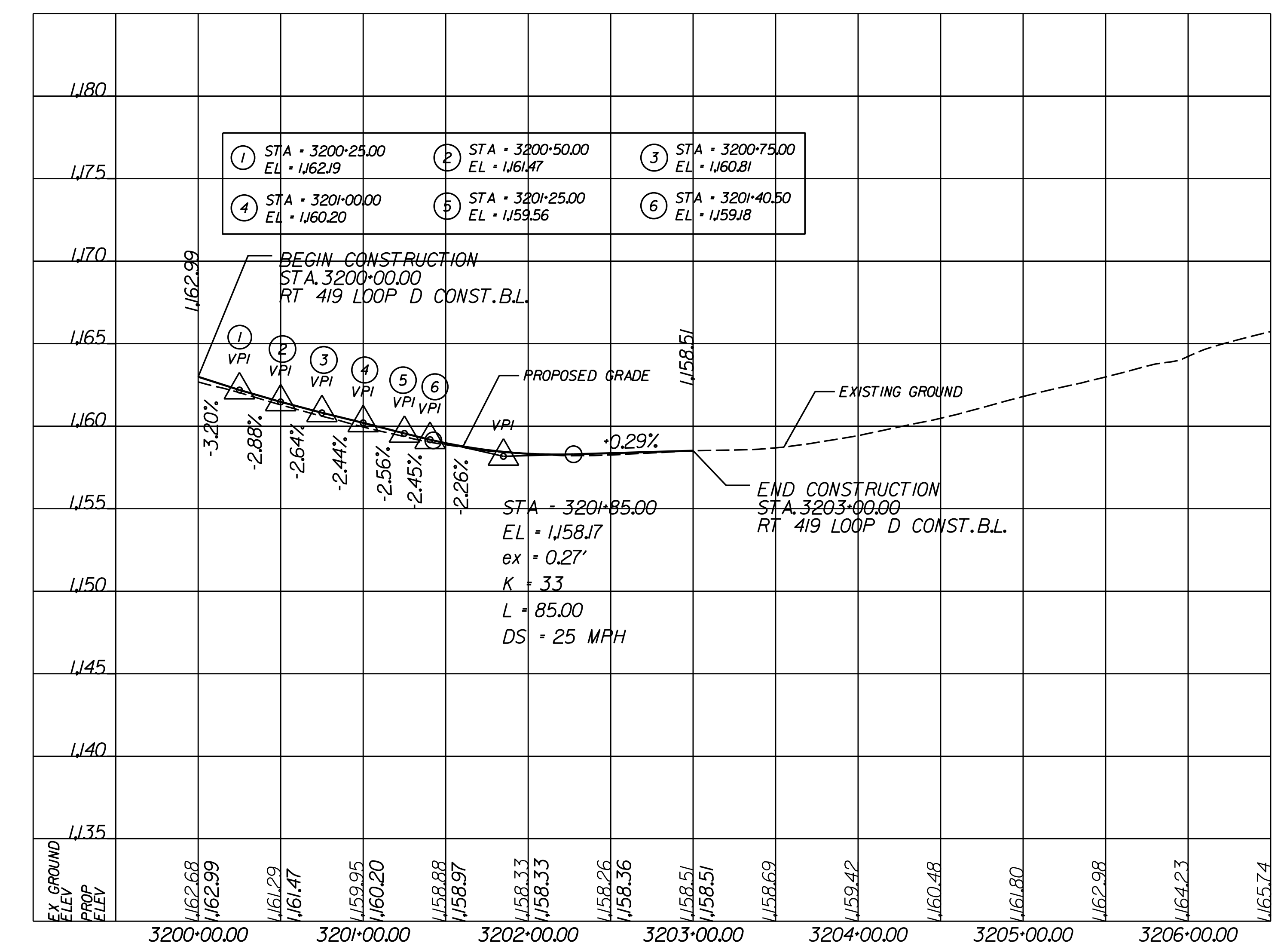
### RT. 419 LOOP B



### RT. 419 RAMP D



### RT. 419 LOOP D



RFP PLANS  
For Information  
Only  
DATE: 10/22/20

THESE PLANS ARE UNFINISHED AND UNAPPROVED AND ARE NOT TO BE USED FOR ANY TYPE OF CONSTRUCTION OR THE ACQUISITION OF RIGHT OF WAY.

ADDITIONAL EASEMENTS FOR UTILITY RELOCATIONS MAY BE REQUIRED BEYOND THE PROPOSED RIGHT-OF-WAY SHOWN ON THESE PLANS.

Contact Information  
 Craig Moore, PE  
 Project Manager / Assistant District L&D Engineer  
 Virginia Department of Transportation  
 731 Harrison Avenue  
 Salem, VA 24153

Comments may also be sent to:  
 I81-MM138-141@vdot.virginia.gov

I-81 Widening MM 136.6 to 141.8  
 Roanoke County / City of Salem, Virginia  
 0081-080-946, P101, R201, C501  
 UPC 116203  
 Federal Project Number